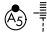


WAAS CH <b>45500</b> <b>W07A</b>	APP CRS <b>070°</b>	Rwy Idg THRE <b>28</b> Apt Elev <b>34</b>	<b>9810</b>
--	------------------------	--	-------------

# RNAV (GPS) RWY 7L

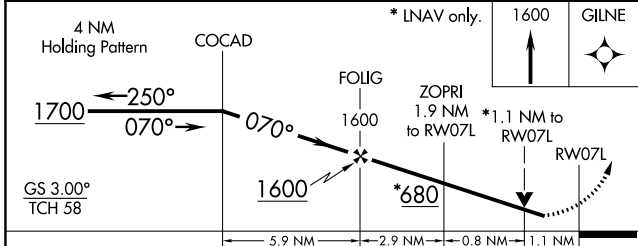
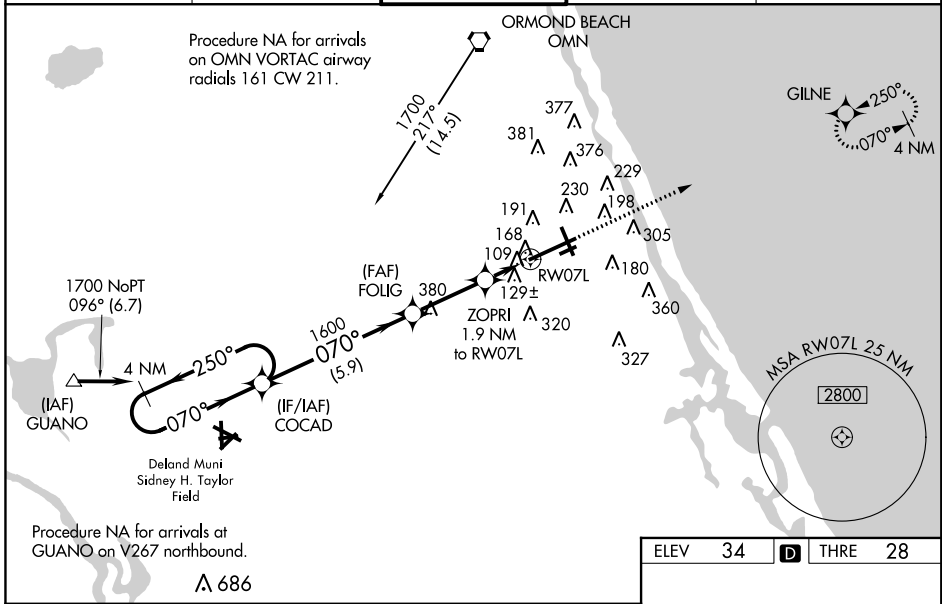
DAYTONA BEACH INTL (DAB)

**ASR** Inoperative table does not apply to LPV all Cats. For uncompensated Baro-VNAV systems, LNAV/VNAV NA below -1.5°C (5°F) or above 43°C (109°F). DME/DME RNP-0.3 NA. Visibility reduction by helicopters NA. For inoperative MALSR, increase LNAV/VNAV visibility all Cats to 1 1/4 and increase LNAV Cats A/B visibility to RVR 5000 and Cats C/D visibility to RVR 6000. When VGSi inop, Circling to Rwy 34 NA at night. Circling to Rwy 7R, 25L, NA at night.

**MALSR** 

**MISSED APPROACH:** Climb to 1600 direct GILNE and hold.

<b>ATIS</b> <b>120.05</b>	<b>DAYTONA APP CON</b> <b>125.72 379.95</b>	<b>DAYTONA TOWER</b> <b>120.7 257.8</b>	<b>GND CON</b> <b>121.9 348.6</b>	<b>CLNC DEL</b> <b>119.3</b>
------------------------------	--	--	--------------------------------------	---------------------------------



ELEV 34	<b>D</b>	THRE 28
---------	----------	---------

110±

106

135

10500 1150

600

34

113±

TWR 149

R 103± 3195 x 100

070° to RW07L

TDZ/CL Rwy 7L

HIRL Rwy 7L-25R

REIL Rws 7R, 16, 25L, and 34

MIRL Rws 7R-25L and 16-34

CATEGORY	A	B	C	D
LPV DA		228/40	200 (200-3/4)	
LNAV/VNAV DA		427/45	399 (400-7/8)	
LNAV MDA		420/40	392 (400-3/4)	
CIRCLING	540-1	506 (600-1)	540-1 1/2 506 (600-1 1/2)	620-2 586 (600-2)

SE-3, 07 FEB 2013 to 07 MAR 2013

SE-3, 07 FEB 2013 to 07 MAR 2013