

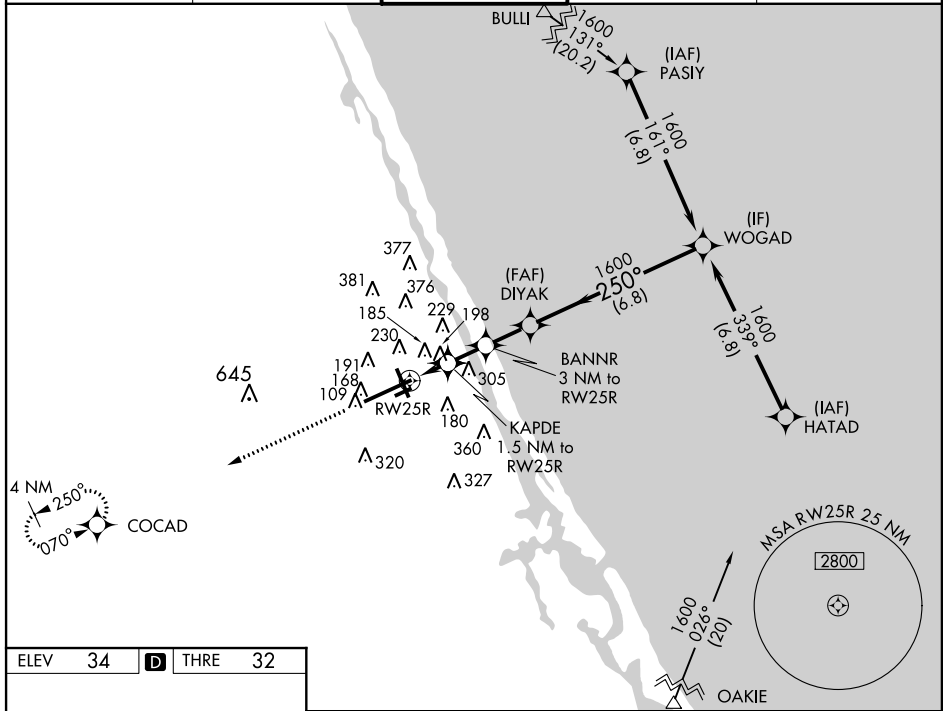
WAAS CH 70327 W25A	APP CRS 250°	Rwy Idg 10293 THRE 32 Apt Elev 34
--	------------------------	--

RNAV (GPS) RWY 25R

DAYTONA BEACH INTL (DAB)

ASR	When VGSi inoperative, Circling Rwy 34 NA at night. For uncompensated Baro-VNAV systems, LNAV/VNAV NA below -1° C (31° F) or above 43° C (109° F). DME/DME RNP-0.3 NA. Circling to Rwy 7R and 25L NA at night.	MALSR	MISSED APPROACH: Climb to 1700 direct COCAD and hold.
-----	--	-------	---

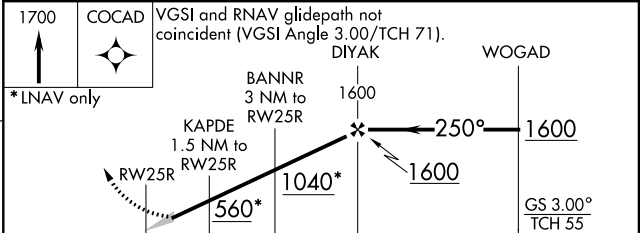
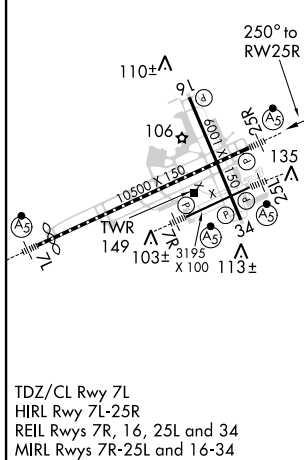
ATIS 120.05	DAYTONA APP CON 125.72 379.95	DAYTONA TOWER 120.7 257.8	GND CON 121.9 348.6	CLNC DEL 119.3
-----------------------	---	-------------------------------------	-------------------------------	--------------------------



SE-3, 07 FEB 2013 to 07 MAR 2013

SE-3, 07 FEB 2013 to 07 MAR 2013

ELEV 34	D	THRE 32
---------	----------	---------



CATEGORY	A	B	C	D
LPV DA	232-3/4 200 (200-3/4)			
LNAV/VNAV DA	451-13/8 419 (500-13/8)			
LNAV MDA	460-1	428 (500-1)	460-1 1/4	428 (500-1 1/4)
CIRCLING	540-1	506 (600-1)	540-1 1/2 506 (600-1 1/2)	620-2 586 (600-2)