

LAMMA FIVE DEPARTURE

ATIS 120.05
CLNC DEL 119.3
GND CON 121.9
DAYTONA TOWER 120.7 257.8
DAYTONA DEP CON 123.9

OCALA
113.7 OCF
Chan 84

ORMOND BEACH
112.6 OMN
Chan 73

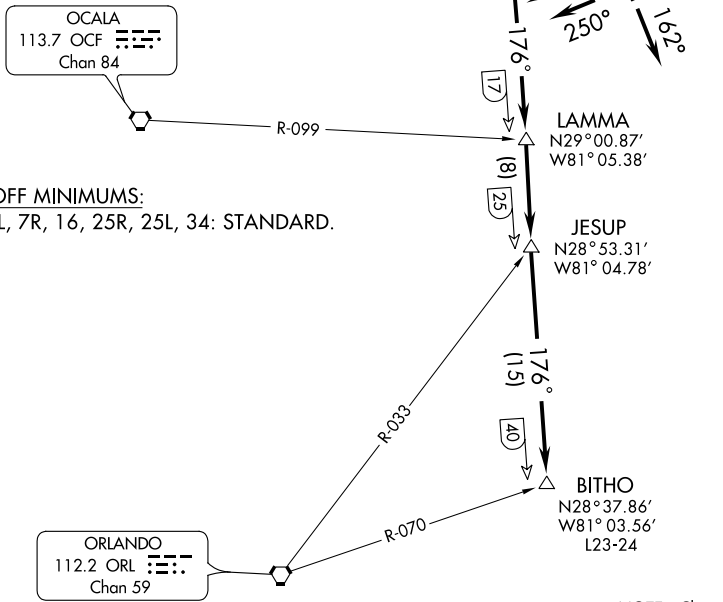
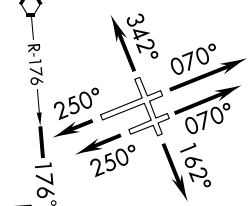
TAKEOFF MINIMUMS:
Rwy 7L, 7R, 16, 25R, 25L, 34: STANDARD.

ORLANDO
112.2 ORL
Chan 59

LAMMA
N29°00.87'
W81°05.38'

JESUP
N28°53.31'
W81°04.78'

BITHO
N28°37.86'
W81°03.56'
L23-24



NOTE: Chart not to scale.

DEPARTURE ROUTE DESCRIPTION

- TAKEOFF RUNWAY 7L: Climb heading 070° to 5000 or as assigned by ATC, thence
- TAKEOFF RUNWAY 7R: Climb heading 070° to 5000 or as assigned by ATC, thence
- TAKEOFF RUNWAY 16: Climb heading 162° to 5000 or as assigned by ATC, thence
- TAKEOFF RUNWAY 25R: Climb heading 250° to 5000 or as assigned by ATC, thence
- TAKEOFF RUNWAY 25L: Climb heading 250° to 5000 or as assigned by ATC, thence
- TAKEOFF RUNWAY 34: Climb heading 342° to 5000 or as assigned by ATC, thence

. . . . Expect vectors to intercept OMN R-176 to BITHO INT, then via assigned route. Expect clearance to filed altitude/flight level ten (10) minutes after departure.