

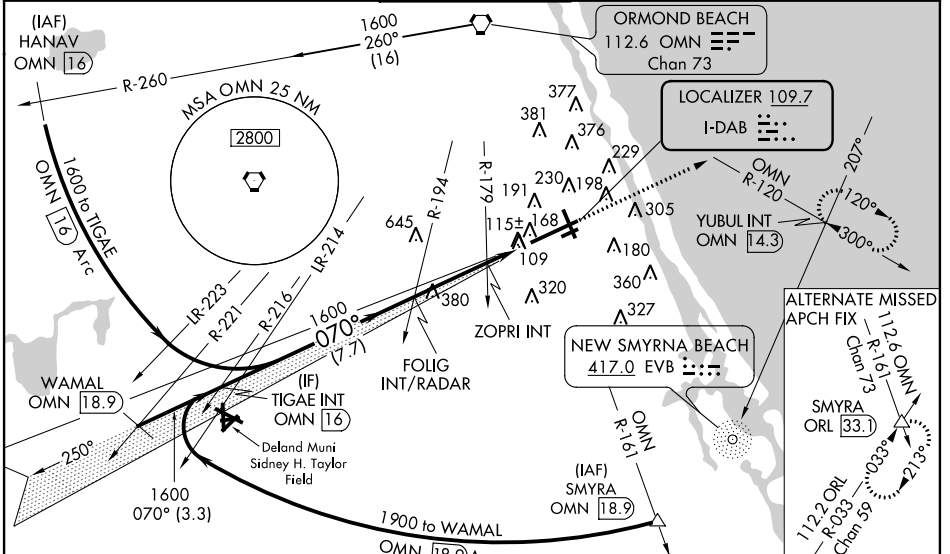
LOC I-DAB 109.7	APP CRS 070°	Rwy Idg THRE 28 Apt Elev 34
---------------------------	------------------------	--

ILS or LOC RWY 7L

DAYTONA BEACH INTL (DAB)

<p>ASR</p> <p>Inoperative table does not apply to S-ILS 7L. ADF or DME required. Visibility reduction by helicopters NA. For inoperative MALSRL, increase S-LOC 7L Cats A/B visibility and increase ZOPRI fix minimums S-LOC 7L all Cats visibility to RVR 5500. When VGS1 inop, Circling to Rwy 34 NA at night. Circling to Rwy 7R, 25L NA at night.</p>	<p>MALSRL</p> <p>MISSED APPROACH: Climb to 1600 on heading 070° and OMN VORTAC R-120 to YUBUL INT/OMN 14.3 DME and hold.</p>
--	---

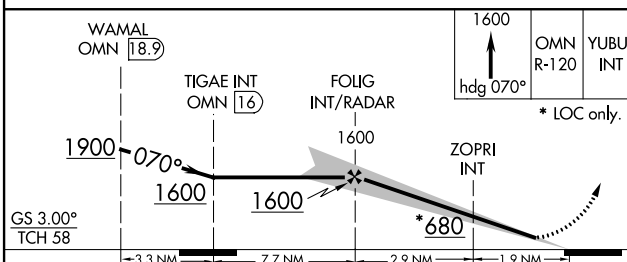
<p>ATIS 120.05</p>	<p>DAYTONA APP CON 125.72 379.95</p>	<p>DAYTONA TOWER 120.7 257.8</p>	<p>GND CON 121.9 348.6</p>	<p>CLNC DEL 119.3</p>
--------------------------------------	--	--	--	---



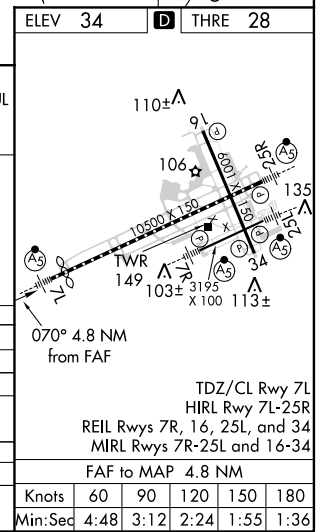
SE-3, 07 FEB 2013 to 07 MAR 2013

SE-3, 07 FEB 2013 to 07 MAR 2013

RADAR or DME REQUIRED



CATEGORY	A	B	C	D
S-ILS 7L		228/40	200 (200-¾)	
S-LOC 7L	680-40	652 (700-¾)	680-1⅞	652 (700-1⅞)
CIRCLING	680-1	646 (700-1)	646 (700-1⅞)	646 (700-2)
ZOPRI FIX MINIMUMS (DUAL VOR RECEIVERS REQUIRED)				
S-LOC 7L	380/40		352 (400-¾)	
CIRCLING	540-1	506 (600-1)	540-1½	620-2
			506 (600-1½)	586 (600-2)



ELEV 34		D THRE 28	
<p>TDZ/CL Rwy 7L HIRL Rwy 7L-25R REIL Rws 7R, 16, 25L, and 34 MIRL Rws 7R-25L and 16-34</p> <p>FAF to MAP 4.8 NM</p>			
Knots	60	90	120 150 180
Min:Sec	4:48	3:12	2:24 1:55 1:36