

LOC/DME I-DBF 109.7 Chan 34	APP CRS 250°	Rwy Idg 10293 THRE 32 Apt Elev 34
--	------------------------	--

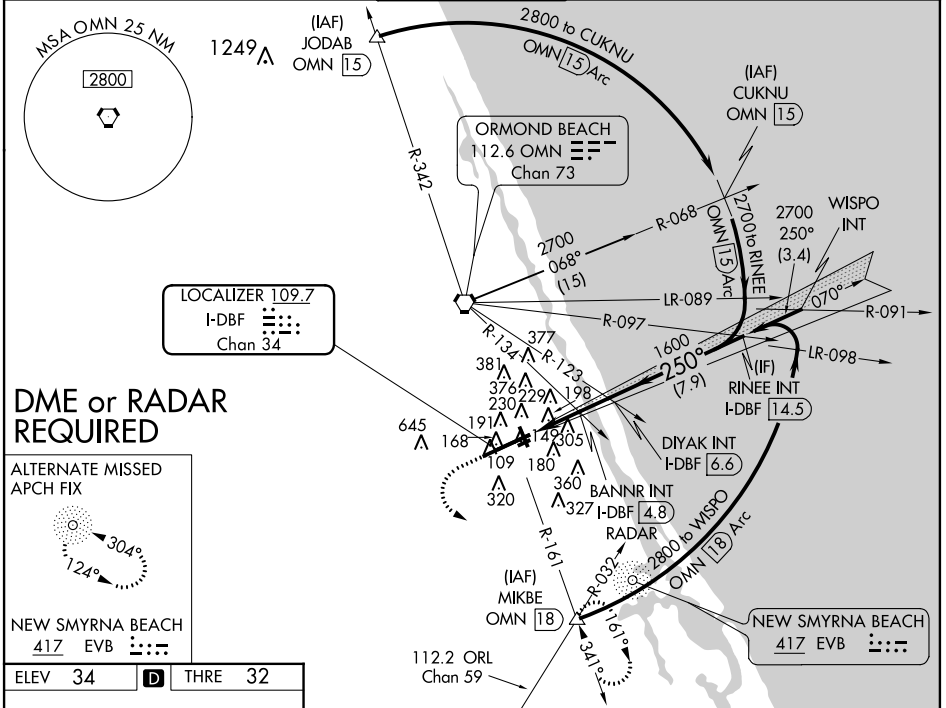
ILS or LOC RWY 25R

DAYTONA BEACH INTL (DAB)

ASR When VGSI inoperative, Circling Rwy 34 NA at night.
ASR Circling to Rwy 7R and 25L NA at night.

MALS MISSED APPROACH: Climb to 500 then climbing left turn to 2800 on heading 140° and OMN VORTAC R-161 to MIKBE INT/OMN 18 DME and hold.

ATIS 120.05	DAYTONA APP CON 125.72 379.95	DAYTONA TOWER 120.7 257.8	GND CON 121.9 348.6	CLNC DEL 119.3
-----------------------	---	-------------------------------------	-------------------------------	--------------------------

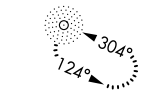


SE-3, 07 FEB 2013 to 07 MAR 2013

SE-3, 07 FEB 2013 to 07 MAR 2013

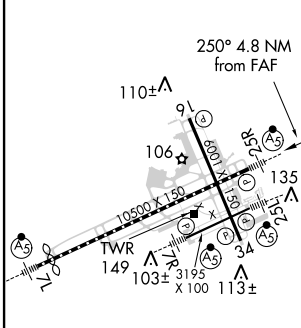
DME or RADAR REQUIRED

ALTERNATE MISSED APCH FIX



NEW SMYRNA BEACH
417 EVB

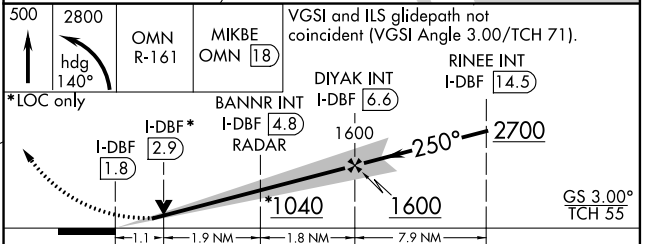
ELEV 34	D	THRE 32
---------	----------	---------



TDZ/CL Rwy 7L
 HIRL Rwy 7L-25R
 REIL Rws 7R, 16, 25L and 34
 MIRL Rws 7R-25L and 16-34

FAF to MAP 4.8 NM

Knots	60	90	120	150	180
Min:Sec	4:48	3:12	2:24	1:55	1:36



CATEGORY	A	B	C	D
S-ILS 25R		232- ³ / ₄	200 (200- ³ / ₄)	
S-LOC 25R	1040-1 ¹ / ₄ 1008 (1100-1 ¹ / ₄)	1040-1 ¹ / ₂ 1008 (1100-1 ¹ / ₂)	1040-3	1008 (1100-3)
CIRCLING	1040-1 ¹ / ₄ 1006 (1100-1 ¹ / ₄)	1040-1 ¹ / ₂ 1006 (1100-1 ¹ / ₂)	1040-3	1006 (1100-3)
BANNR FIX MINIMUMS (DUAL VOR RECEIVERS, or DME or RADAR REQUIRED)				
S-LOC 25R	440-1	408 (500-1)	440-1 ¹ / ₂	408 (500-1 ¹ / ₂)
CIRCLING	540-1	506 (600-1)	540-1 ¹ / ₂	506 (600-1 ¹ / ₂)