

TACAN FFO Chan 99	APCH CRS 059°	Rwy Idg 12,600 TDZE 804 Arpt Elev 823	AL-108 [USAF]	WRIGHT-PATTERSON AFB (KFFO)
----------------------	------------------	---	---------------	-----------------------------

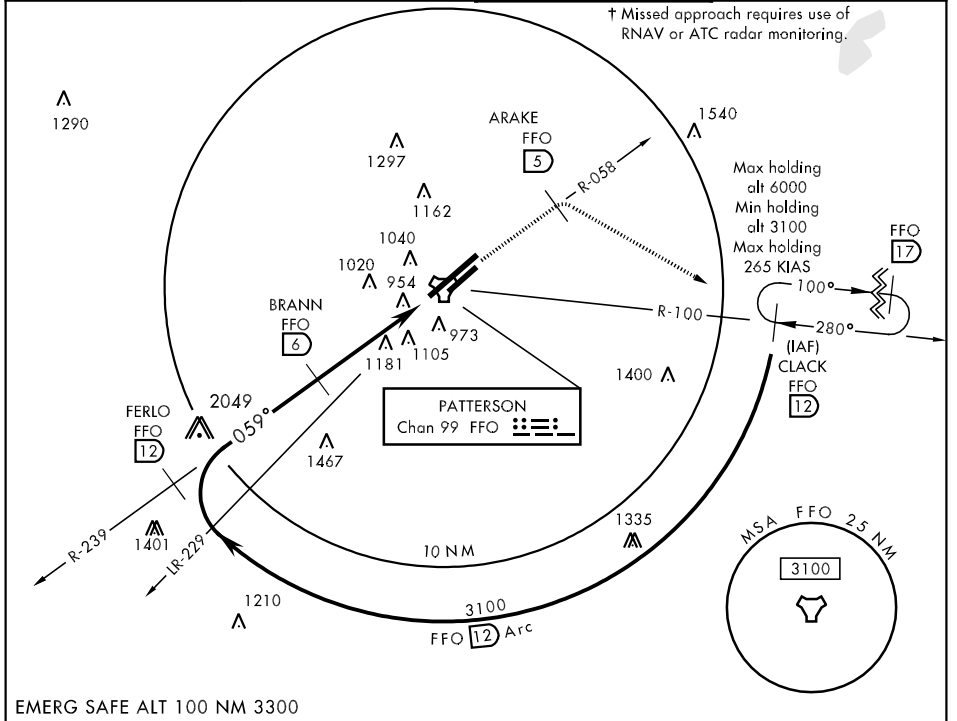
\* When ALS inop, increase RVR CAT AB to 55 and vis to 1 mile, CAT CDE vis to 1 1/2 miles.  
 \*\* When Rwy 23R VGSI inop, circling to Rwy 23R NA at night.



† MISSED APPROACH: Climb to 2000 via FFO R-058 to 5 DME, turn right direct CLACK climbing to 3100 and hold.

ATIS 124.475 269.9	COLUMBUS APP CON 126.5 327.125	PATTERSON TOWER 126.9 281.45	GND CON 121.8 335.8
-----------------------	-----------------------------------	---------------------------------	------------------------

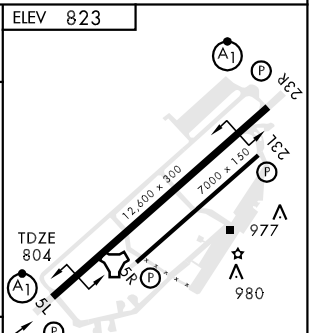
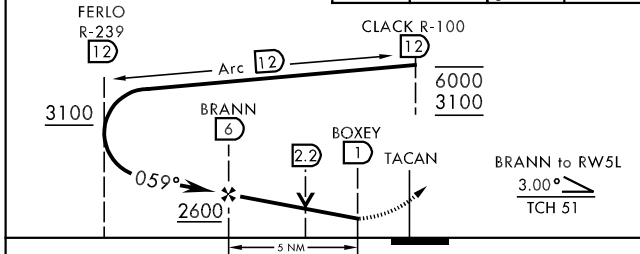
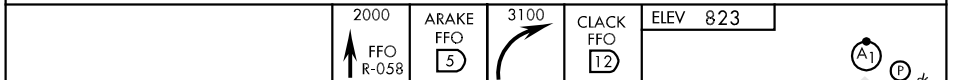
† Missed approach requires use of RNAV or ATC radar monitoring.



EC-2, 07 FEB 2013 to 07 MAR 2013

EC-2, 07 FEB 2013 to 07 MAR 2013

EMERG SAFE ALT 100 NM 3300



CATEGORY	A	B	C	D	E
S-5L *	1460/24 656 (700-1/2)		1460-1 3/8 656 (700-1 3/8)		
CIRCLING **	1480-1 657 (700-1)		1480-1 7/8 657 (700-1 7/8)	1500-2 1/4 677 (700-2 1/4)	1620-2 3/4 797 (800-2 3/4)

HIRL Rwy 5L-23R  
 MIRL Rwy 5R-23L