

DAYTON, OHIO

TACAN RWY 23R

TACAN FFO Chan 99	APCH CRS 230°	Rwy Idg 12,600 THRE 823 Arpt Elev 823	AL-108 [USAF]	WRIGHT-PATTERSON AFB (KFFO)
--------------------------	----------------------	------------------------------------------------------------------	---------------	-----------------------------

▼ * When ALS inop, increase CAT AB RVR to 50 and vis to 1 mile, CAT C RVR to 60 and vis to 1 1/4 miles, CAT D vis to 1 1/2 miles, and CAT E vis to 1 3/4 miles.

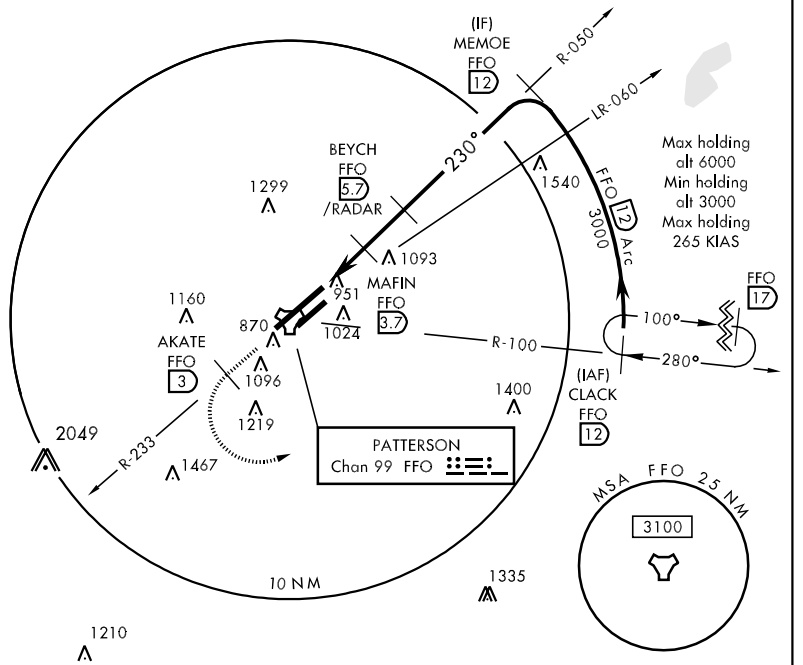


↑ MISSED APPROACH: Climb to 2000 via FFO R-233, at 3 DME turn left direct CLACK climbing to 3000 and hold.

ATIS 124.475 269.9	COLUMBUS APP CON 126.5 327.125	PATTERSON TOWER 126.9 281.45	GND CON 121.8 335.8
------------------------------	------------------------------------------	----------------------------------------	-------------------------------

** When Rwy 23R VGSI inop, circling to Rwy 23R NA at night.

† Missed approach requires use of RNAV or ATC radar monitoring.



EC-2, 07 FEB 2013 to 07 MAR 2013

EC-2, 07 FEB 2013 to 07 MAR 2013

EMERG SAFE ALT 100 NM 3300

2000 ↑ FFO R-233	AKATE FFO 3	3000	CLACK R-100 FFO 12	MEMOE R-050 12
------------------------	-------------	------	--------------------	----------------

VGSI and Descent Angle not coincident
 6000
3000
 BEYCH 5.7 /RADAR
 DINGY 2.1
 MAFIN to RW23R 3.7
 TCH 54
 2.96°
 230°
 1660
2400
 12 600 x 300
 7000 x 150
 977
980

CATEGORY	A	B	C	D	E
S-23R *	1320/24 497 (500-1/2)		1320/50	497 (500-1)	
CIRCLING **	1380-1 557 (600-1)	1400-1 577 (600-1)	1420-1 1/2 597 (600-1/2)	1460-2 637 (700-2)	1620-2 3/4 797 (800-234)

HIRL Rwy 5L-23R
MIRL Rwy 5R-23L

DAYTON, OHIO 39° 50'N-84° 03'W WRIGHT-PATTERSON AFB (KFFO)

TACAN RWY 23R