

RNAV (GPS) RWY 5R

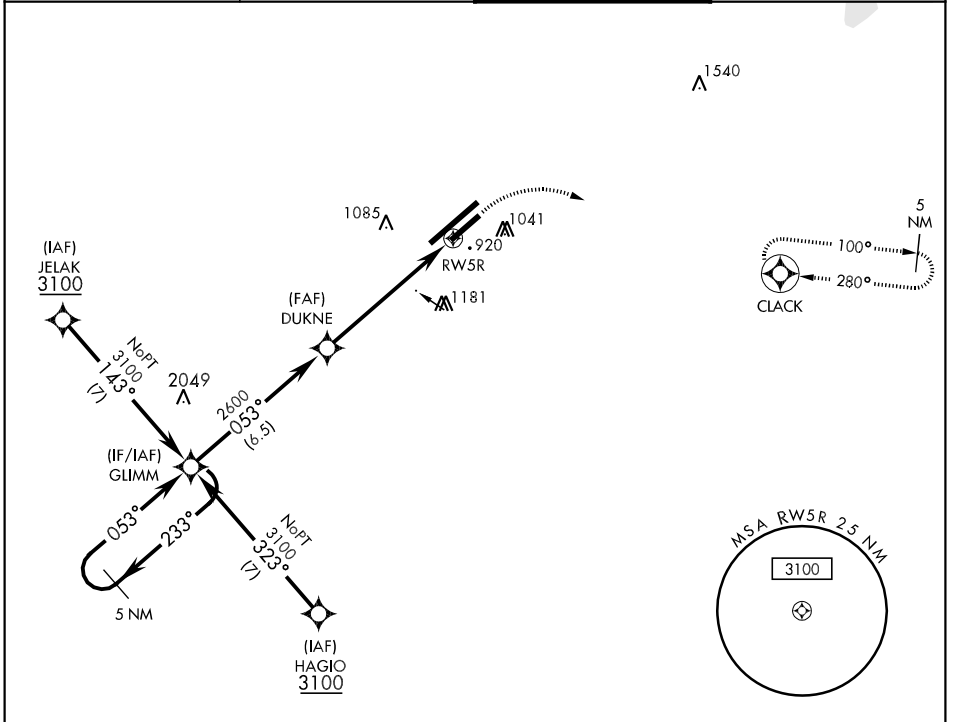
APCH CRS 053°	Rwy Idg 7,000
	THRE 808
	Arpt Elev 823

AL-108 [USAF]

WRIGHT-PATTERSON AFB (KFFO)

<p>▼ * When Rwy 23R VGS1 inop, circling to Rwy 23R NA at night.</p> <p>DME/DME RNP-0.3 NA</p>	<p>MISSED APPROACH: Turn right climb to 3100 direct CLACK WPT and hold.</p>
---	---

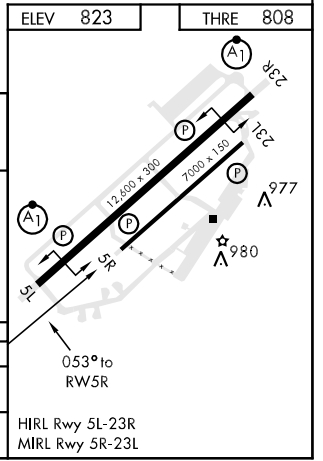
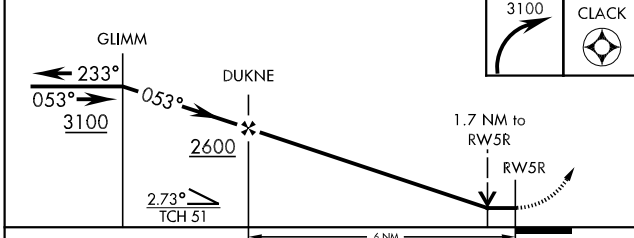
<p>ATIS 124.475 269.9</p>	<p>COLUMBUS APP CON 126.5 327.125</p>	<p>PATTERSON TOWER 126.9 281.45</p>	<p>GND CON 121.8 335.8</p>
--------------------------------------	--	--	---------------------------------------



EC-2, 07 FEB 2013 to 07 MAR 2013

EC-2, 07 FEB 2013 to 07 MAR 2013

EMERG SAFE ALT 100 NM 3300	ELEV 823	THRE 808
----------------------------	----------	----------



CATEGORY	A	B	C	D
RNAV MDA	1400-1	592 (600-1)	1400-1¾ 592 (600-1¾)	
CIRCLING *	1400-1 577 (600-1)	1440-1 617 (700-1)	1560-2 737 (800-2)	1620-2½ 797 (800-2½)

RNAV (GPS) RWY 5R