

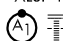
RNAV (GPS) RWY 23R

APCH CRS 233°	Rwy Idg 12,600 TDZE 823 Arpt Elev 823
-------------------------	--

AL-108 [USAF]

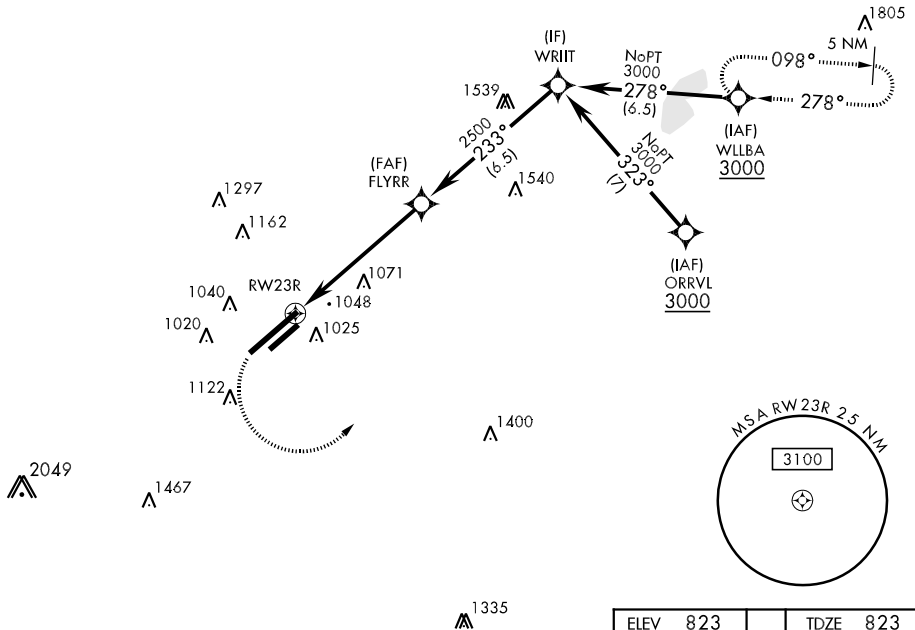
WRIGHT-PATTERSON AFB (KFFO)

▼ * When ALS inop, increase CAT AB vis to 1 mile, CAT C vis to 1½ miles, and CAT D vis to 1¾ miles.
** When Rwy 23R VGSI inop, circling to Rwy 23R NA at night.

ALSF-1  MISSED APPROACH: Turn left climb to 3000 direct WLLBA WPT and hold.

ATIS 124.475 269.9	COLUMBUS APP CON 126.5 327.125	PATTERSON TOWER 126.9 281.45	GND CON 121.8 335.8
------------------------------	--	--	-------------------------------

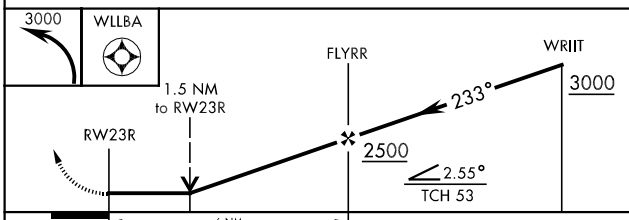
DME/DME RNP-0.3 NA



EC-2, 07 FEB 2013 to 07 MAR 2013

EC-2, 07 FEB 2013 to 07 MAR 2013

EMERG SAFE ALT 100 NM 3300 FROM RWY23R



ELEV 823	TDZE 823
----------	----------

Aerial view details: RWY 23R, taxiway 21L, 21R, 21, 22, 23, 24, 25, 26, 27, 28, 29, 30, 31, 32, 33, 34, 35, 36, 37, 38, 39, 40, 41, 42, 43, 44, 45, 46, 47, 48, 49, 50, 51, 52, 53, 54, 55, 56, 57, 58, 59, 60, 61, 62, 63, 64, 65, 66, 67, 68, 69, 70, 71, 72, 73, 74, 75, 76, 77, 78, 79, 80, 81, 82, 83, 84, 85, 86, 87, 88, 89, 90, 91, 92, 93, 94, 95, 96, 97, 98, 99, 100. Altitudes: 233° to RWY23R, 977, 980, 997, 12,600 x 300, 7000 x 150, 5R, 5L.

HIRL Rwy 5L-23R
MIRL Rwy 5R-23L

RNAV (GPS) RWY 23R