

DAYTON, OHIO

# ILS Z RWY 23R

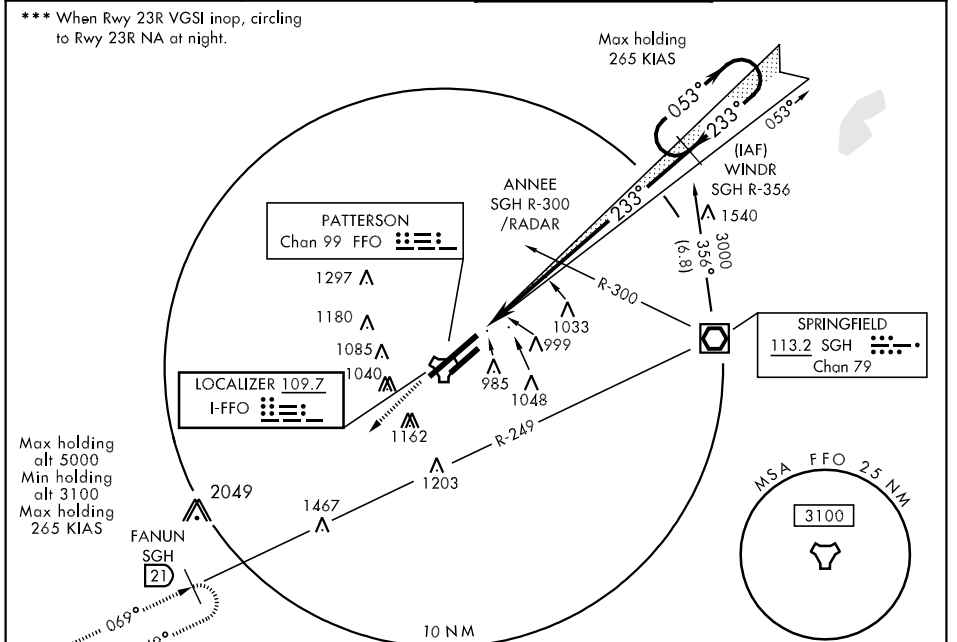
LOC I-FFO <b>109.7</b>	APCH CRS <b>233°</b>	Rwy Idg <b>12,600</b> TDZE <b>823</b> Arpt Elev <b>823</b>	AL-108 [USAF]	WRIGHT-PATTERSON AFB (KFFO)
---------------------------	-------------------------	--	---------------	-----------------------------

**▼** \* When ALS inop, increase RVR to 40 and vis to ¼ mile.  
**\*\*** When ALS inop, increase CAT AB RVR to 50 and vis to 1 mile, CAT C RVR to 60 and vis to 1 ¼ miles, CAT D vis to 1 ½ miles, CAT E vis to 1 ¾ miles.



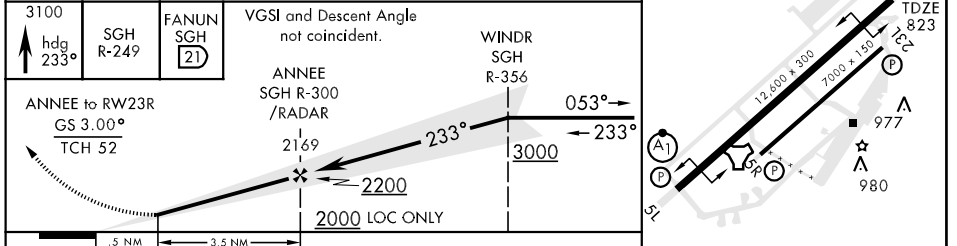
**MISSED APPROACH:** Track hdg 233° climb to 3100 intercept SGH R-249 to FANUN and hold.

ATIS <b>124.475 269.9</b>	COLUMBUS APP CON <b>126.5 327.125</b>	PATTERSON TOWER <b>126.9 281.45</b>	GND CON <b>121.8 335.8</b>
------------------------------	--	--	-------------------------------



EC-2, 07 FEB 2013 to 07 MAR 2013

EC-2, 07 FEB 2013 to 07 MAR 2013



ELEV 823		233° 3.5 NM from FAF				
3100		233°				
hdg 233°		233°				
SGH R-249		233°				
FANUN SGH 21		233°				
ANNEE to RW23R		233°				
GS 3.00°		233°				
TCH 52		233°				
2000 LOC ONLY		233°				
.5 NM		3.5 NM				
CATEGORY	A	B	C	D	E	
S-ILS 23R *	1023/24 200 (200-½)					
S-LOC 23R **	1320/24	497 (500-½)	1320/40	1320/50	1320/60	
	497 (500-¾) 497 (500-1) 497 (500-1¼)					
CIRCLING ***	1380-1	1400-1	1420-1½	1460-2	1620-2¾	
	557 (600-1) 577 (600-1) 597 (600-1½) 637 (700-2) 797 (800-2¾)					
FAF to MAP 3.5 NM						
Knots	60	90	120	150	180	
Min:Sec	3:30	2:20	1:45	1:24	1:10	

DAYTON, OHIO 39° 50'N-84° 03'W WRIGHT-PATTERSON AFB (KFFO)

# ILS Z RWY 23R

Amdt 1 11237