

LOC I-FAE 109.7	APCH CRS 053°	Rwy Idg 12,600 TDZE 804 Arpt Elev 823
---------------------------	-------------------------	---

AL-108 [USAF]

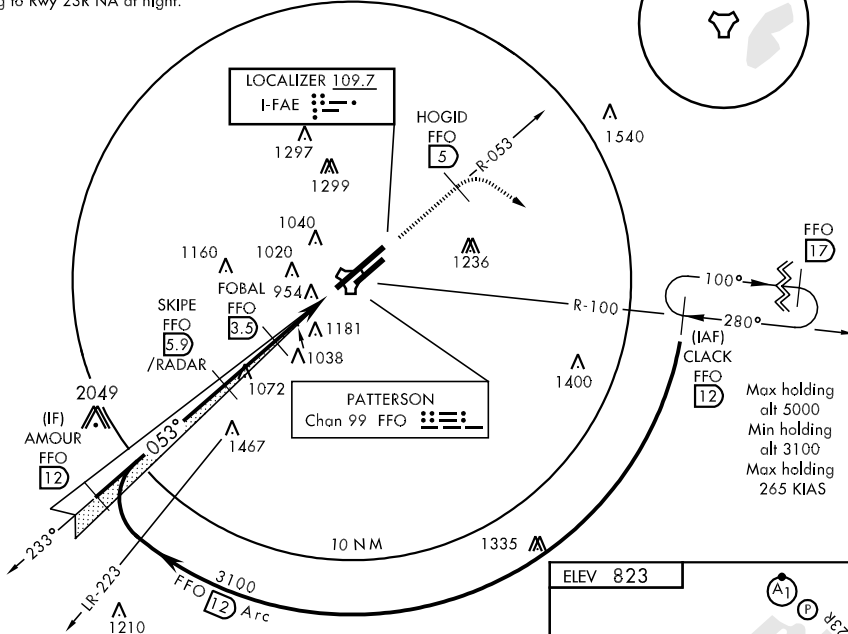
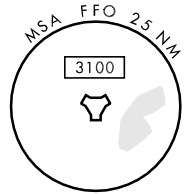
WRIGHT-PATTERSON AFB (KFFO)

▼ * When ALS inop, increase RVR to 40 and vis to ¼ mile.
 ** When ALS inop, increase CAT AB RVR to 55 and vis to 1 mile, CAT CDE vis to 1 ½ miles.
 † MISSED APPROACH: Climb to 2000 via FFO R-053 at 5 DME, turn right direct CLACK climbing to 3100 and hold.

ATIS 124.475 269.9	COLUMBUS APP CON 126.5 327.125	PATTERSON TOWER 126.9 281.45	GND CON 121.8 335.8
------------------------------	--	--	-------------------------------

† Missed approach requires use of RNAV or ATC radar monitoring.
 *** When Rwy 23R VGSI inop, circling to Rwy 23R NA at night.

DME or RADAR REQUIRED FOR LOCALIZER

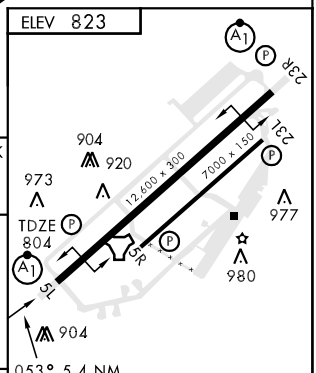
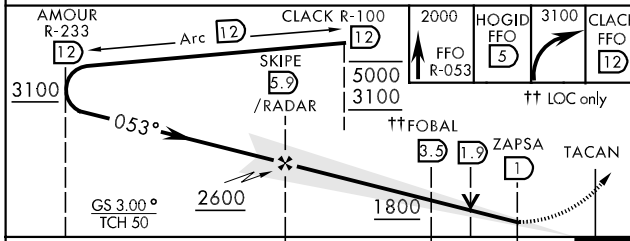


Max holding alt 5000
 Min holding alt 3100
 Max holding 265 KIAS

EC-2, 07 FEB 2013 to 07 MAR 2013

EC-2, 07 FEB 2013 to 07 MAR 2013

EMERG SAFE ALT 100 NM 3300



CATEGORY	A	B	C	D	E
S-ILS 5L *	1004/24		200	(200-½)	
S-LOC 5L **	1320/24 516 (500-½)		1320/55 516 (500-1)		
CIRCLING ***	1480-1 657 (700-1)		1480-1¼ 657 (700-1¾)	1500-2¼ 677 (700-2¼)	1620-2¾ 797 (800-2¾)

HRL Rwy 5L-23R MIRL Rwy 5R-23L					
FAF to MAP 4.9 NM					
Knots	60	90	120	150	180
Min:Sec	4:54	3:16	2:27	1:58	1:38