

WAAS CH 90414 W06B	APP CRS 059°	Rwy Idg TDZE Apt Elev	7001 1007 1009
--	------------------------	-----------------------------	---

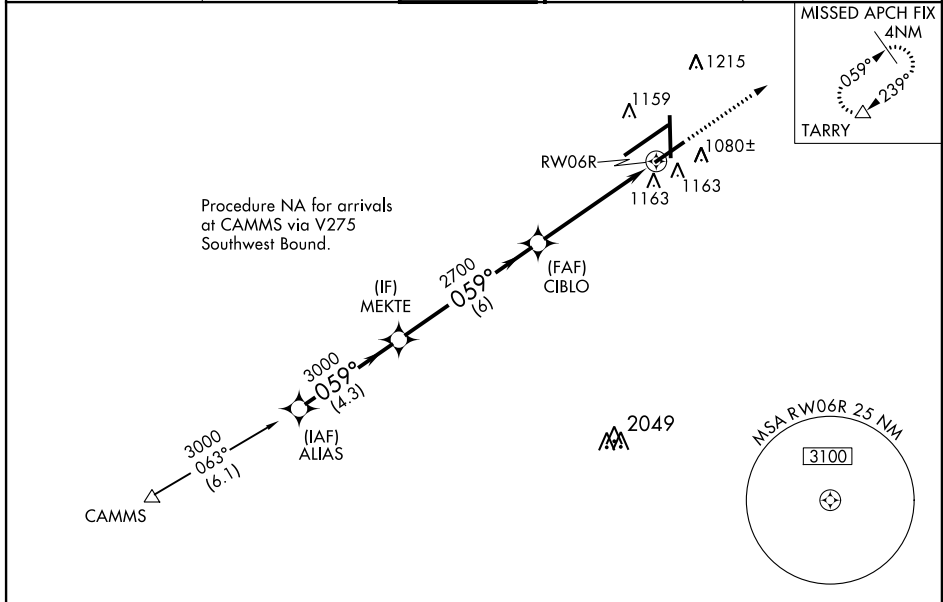
RNAV (GPS) RWY 6R

DAYTON/ JAMES M. COX DAYTON INTL (DAY)

ASR For uncompensated Baro-VNAV systems, LNAV/VNAV NA below -17°C (2°F) or above 47°C (116°F). DME/DME RNP-0.3 NA. Visibility reduction by helicopters NA. Simultaneous approach authorized with Rwy 6L. LNAV procedure NA during simultaneous operations. Use of FD or AP providing RNAV track guidance required during simultaneous operations.

MISSED APPROACH: Climb to 3000 direct TARRY and hold.

ATIS 125.8	COLUMBUS APP CON 118.425 323.15	DAYTON TOWER 119.9 257.7	GND CON 121.9	CLNC DEL 121.75
----------------------	---	------------------------------------	-------------------------	---------------------------



EC-2, 07 FEB 2013 to 07 MAR 2013

EC-2, 07 FEB 2013 to 07 MAR 2013

Procedure Turn NA	3000	TARRY	
ALIAS	MEKTE	CIBLO	RWY 6R
3000	3000	2700	
GS 3.00°	059°	059°	
TCH 53			
	4.3 NM	6 NM	3.6 NM
			1.5 NM
CATEGORY	A	B	C
LPV DA		1257-3/4	250 (300-3/4)
LNAV/ VNAV DA		1494-1 3/4	487 (500-1 3/4)
LNAV MDA	1520-1	513 (600-1)	1520-1 1/2
			513 (600-1 1/2)
			1520-1 3/4
			513 (600-1 3/4)
CIRCLING	1560-1	551 (600-1)	1560-1 1/2
			551 (600-1 1/2)
			1560-2
			551 (600-2)

