

WAAS CH 42913 W06A	APP CRS 059°	Rwy Idg 10900 TDZE 998 Apt Elev 1009
--	------------------------	---

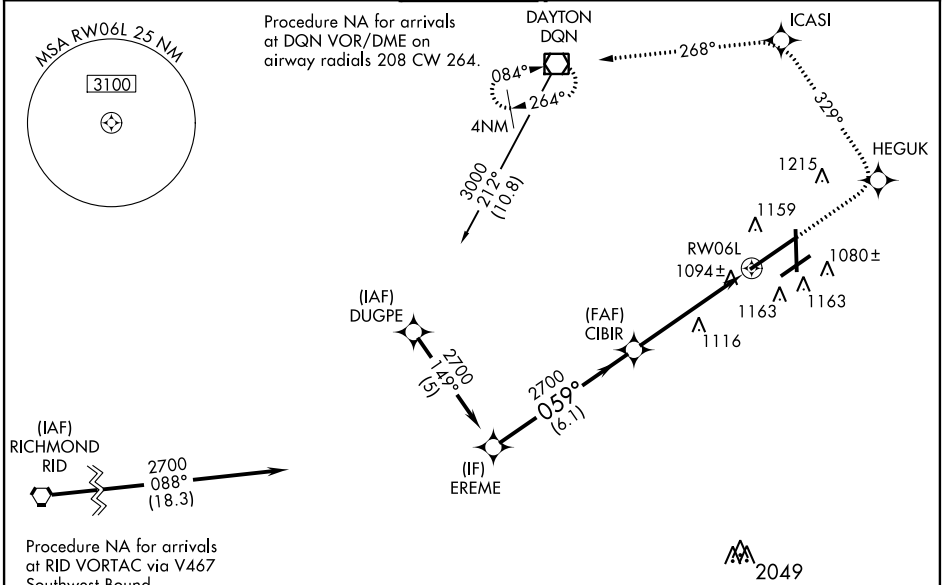
RNAV (GPS) RWY 6L

DAYTON/JAMES M. COX DAYTON INTL (DAY)

ASR For inoperative ALSF-2, increase LNAV Cat D visibility to RVR 6000. For uncompensated Baro-VNAV systems, LNAV/VNAV NA below -17°C (2°F) or above 47°C (116°F). DME/DME RNP-0.3 NA. Simultaneous approach authorized with Rwy 6R. LNAV procedure NA during simultaneous operations. Use of FD or AP providing RNAV track guidance required during simultaneous operations.

ALSF-2 MISSED APPROACH: Climb to 3000 direct HEGUK and via track 329° to ICASI and via track 268° to DQN VOR/DME and hold.

ATIS 125.8	COLUMBUS APP CON 118.425 323.15	DAYTON TOWER 119.9 257.7	GND CON 121.9	CLNC DEL 121.75
----------------------	---	---	-------------------------	---------------------------



EC-2, 07 FEB 2013 to 07 MAR 2013

EC-2, 07 FEB 2013 to 07 MAR 2013

Procedure Turn NA	VGSI and RNAV glide-path not coincident (VGSI Angle 3.00/TCH 67).	3000	HEGUK	ICASI	DQN
		↑	✧	✧ tr 329°	✧ tr 268°
EREME	CIBIR	* LNAV only			
2700	059°	* 1.1 NM to RW06L			
GS 3.00°	TCH 51	RW06L			
	6.1 NM	4 NM	1.1 NM		
CATEGORY	A	B	C	D	
LPV DA	1198/24		200 (200-½)		
LNAV/VNAV DA	1366/40		368 (400-¾)		
LNAV MDA	1420/24	422 (500-½)	1420/40	1420/50	
			422 (500-¾)	422 (500-1)	
CIRCLING	1560-1	551 (600-1)	1560-1½	1560-2	
			551 (600-1½)	551 (600-2)	

