

DAYTON, OHIO

AL-107 (FAA)

RNAV (GPS) RWY 36

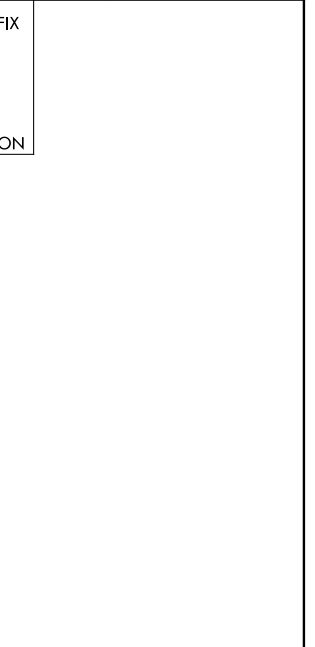
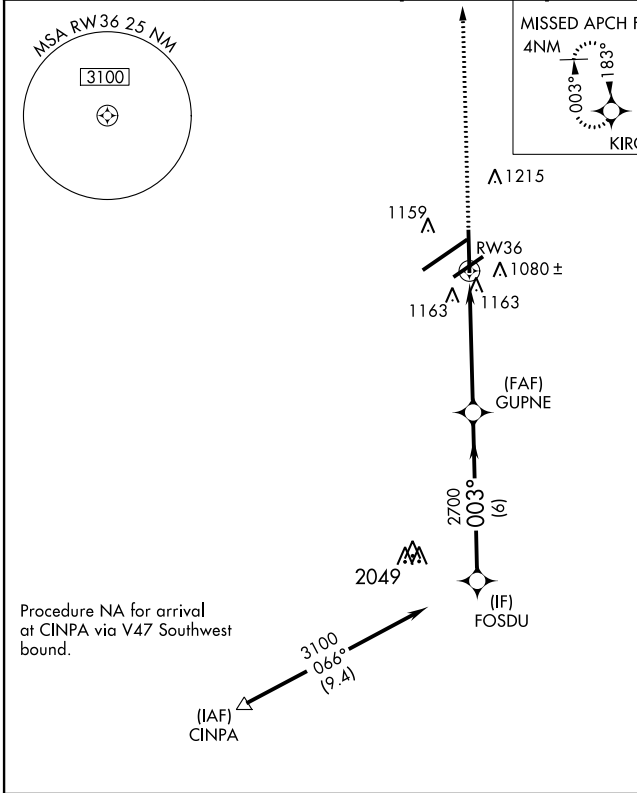
DAYTON/JAMES M. COX DAYTON INTL (DAY)

APP CRS 003°	Rwy Idg 8502
	TDZE 1008
	Apt Elev 1009

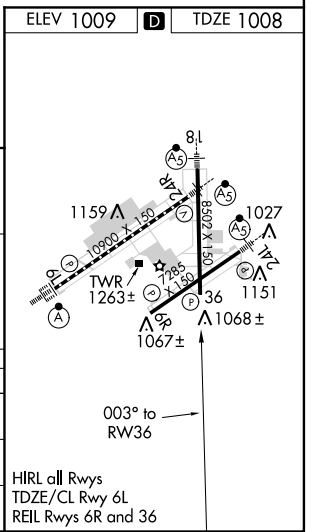
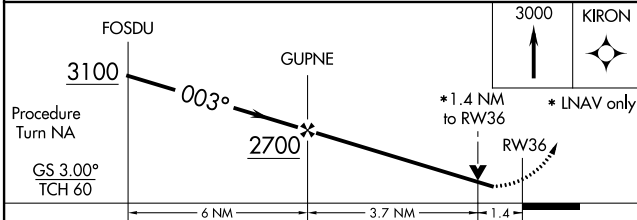
ASR For uncompensated Baro-VNAV systems, LNAV/VNAV NA below -17°C (2°F) or above 47°C (116°F). DME/DME RNP-0.3 NA. Visibility reduction by helicopters NA.

MISSED APPROACH: Climb to 3000 direct to KIRON and hold.

ATIS 125.8	COLUMBUS APP CON 118.425 323.15	DAYTON TOWER 119.9 257.7	GND CON 121.9	CLNC DEL 121.75
----------------------	---	------------------------------------	-------------------------	---------------------------



Procedure NA for arrival at CINPA via V47 Southwest bound.



CATEGORY	A	B	C	D
LNAV/VNAV DA	1449-1½ 441 (500-1½)			
LNAV MDA	1500-1	492 (500-1)	1500-1¼ 492 (500-1¼)	1500-1½ 492 (500-1½)
CIRCLING	1560-1	551 (600-1)	1560-1½ 551 (600-1½)	1560-2 551 (600-2)

HIRL all Rwy's
TDZE/CL Rwy 6L
REIL Rwy's 6R and 36

EC-2, 07 FEB 2013 to 07 MAR 2013

EC-2, 07 FEB 2013 to 07 MAR 2013

DAYTON, OHIO
Amdt 1 12208

DAYTON/JAMES M. COX DAYTON INTL (DAY)
39°54'N-84°13'W

RNAV (GPS) RWY 36