

WAAS CH 66013 W24B	APP CRS 239°	Rwy Idg 10900 TDZE 997 Apt Elev 1009
--	------------------------	---

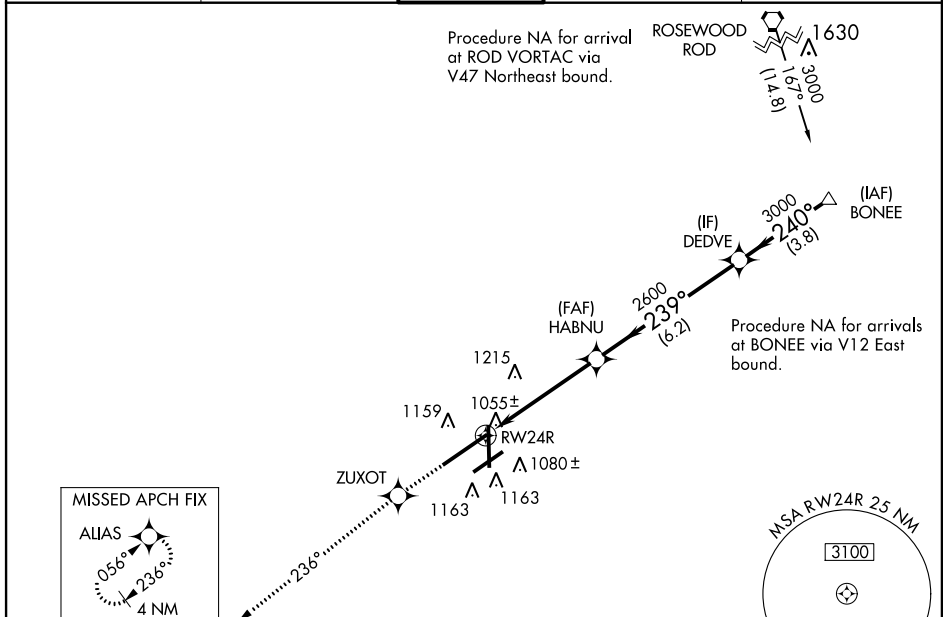
RNAV (GPS) RWY 24R

DAYTON/JAMES M. COX DAYTON INTL (DAY)

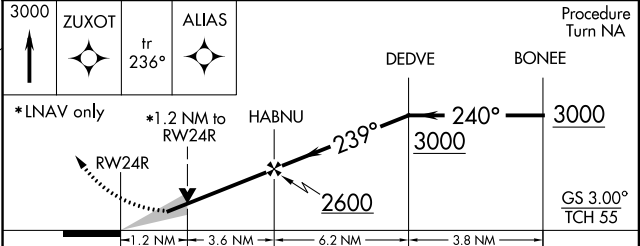
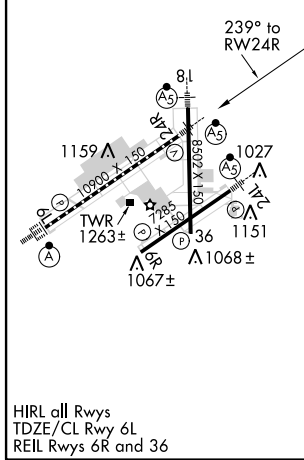
ASR Simultaneous approach authorized with Rwy 24L. LNAV procedure N/A during simultaneous operations. Use of FD or AP providing RNAV track guidance required during simultaneous operations. For uncompensated Baro-VNAV systems, LNAV/VNAV NA below -17°C (2°F) or above 46°C (114°F). DME/DME RNP-0.3 NA.

MALSRL MISSED APPROACH: Climb to 3000 direct ZUXOT and via track 236° to ALIAS and hold.

ATIS 125.8	COLUMBUS APP CON 118.425 323.15	DAYTON TOWER 119.9 257.7	GND CON 121.9	CLNC DEL 121.75
----------------------	---	------------------------------------	-------------------------	---------------------------



ELEV 1009	D	TDZE 997
-----------	----------	----------



CATEGORY	A	B	C	D
LPV DA		1197/24	200 (200-½)	
LNAV/VNAV DA		1364/40	367 (400-¾)	
LNAV MDA	1440/24	443 (500-½)	1440/40 443 (500-¾)	1440/50 443 (500-1)
CIRCLING	1560-1	551 (600-1)	1560-1½ 551 (600-1½)	1560-2 551 (600-2)