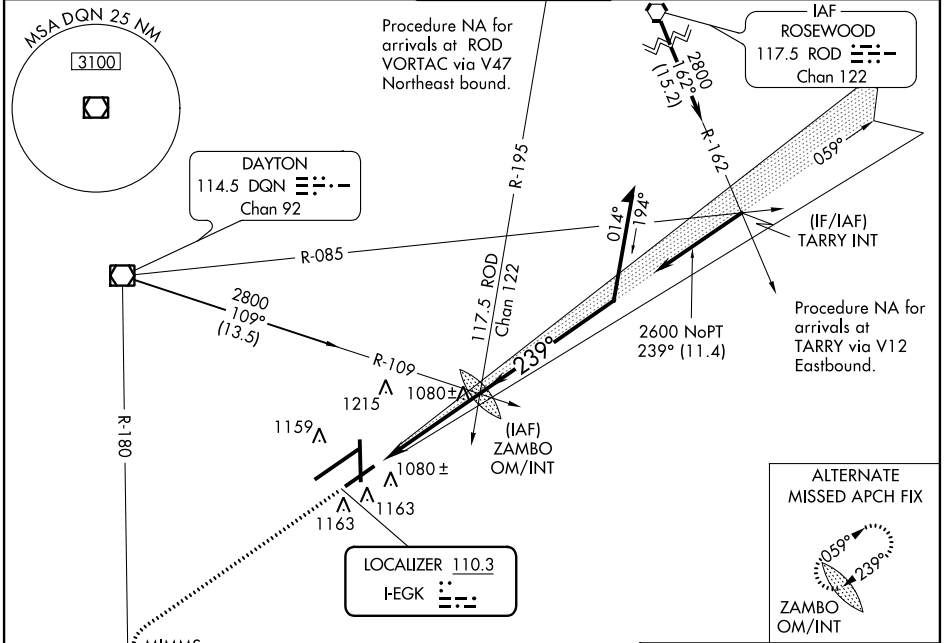


LOC I-EGK <b>110.3</b>	APP CRS <b>239°</b>	Rwy Idg TDZE Apt Elev <b>7001</b> <b>1006</b> <b>1009</b>
---------------------------	------------------------	--

**ILS or LOC RWY 24L**  
DAYTON/JAMES M. COX DAYTON INTL (DAY)

<p><b>ASR</b></p> <p>*RVR 1800 authorized with the use of FD or AP or HUD to DA. Simultaneous approach authorized with Rwy 24R.</p>	<p><b>MALS</b></p>	<p><b>MISSED APPROACH:</b> Climb to 3000 via heading 239° and DGN VOR/DME R-180 to MIMMS Int and hold.</p>
---	--------------------	--

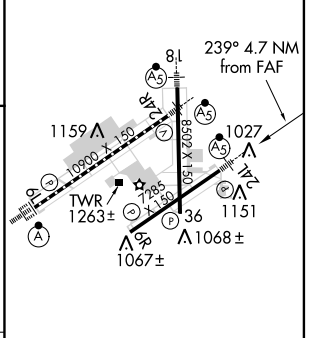
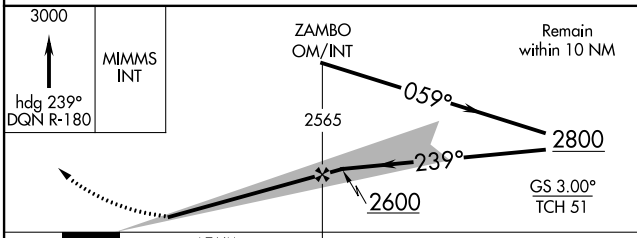
<p><b>ATIS</b> <b>125.8</b></p>	<p><b>COLUMBUS APP CON</b> <b>118.425 323.15</b></p>	<p><b>DAYTON TOWER</b> <b>119.9 257.7</b></p>	<p><b>GND CON</b> <b>121.9</b></p>	<p><b>CLNC DEL</b> <b>121.75</b></p>
-------------------------------------	--	---	--	--



**ALTERNATE MISSED APCH FIX**

ZAMBO OM/INT

ELEV 1009	<b>D</b>	TDZE 1006
-----------	----------	-----------



CATEGORY	A	B	C	D
S-ILS 24L		*1206/24	200 (200-½)	
S-LOC 24L	1500/24	494 (500-½)	1500/40 494 (500-¾)	1500/50 494 (500-1)
CIRCLING	1560-1	551 (600-1)	1560-1½ 551 (600-1½)	1560-2 551 (600-2)

HIRL all Rwys  
TDZ/CL Rwy 6L  
REIL Rwys 6R and 36

FAF to MAP 4.7 NM

Knots	60	90	120	150	180
Min:Sec	4:42	3:08	2:21	1:53	1:34

EC-2, 07 FEB 2013 to 07 MAR 2013

EC-2, 07 FEB 2013 to 07 MAR 2013