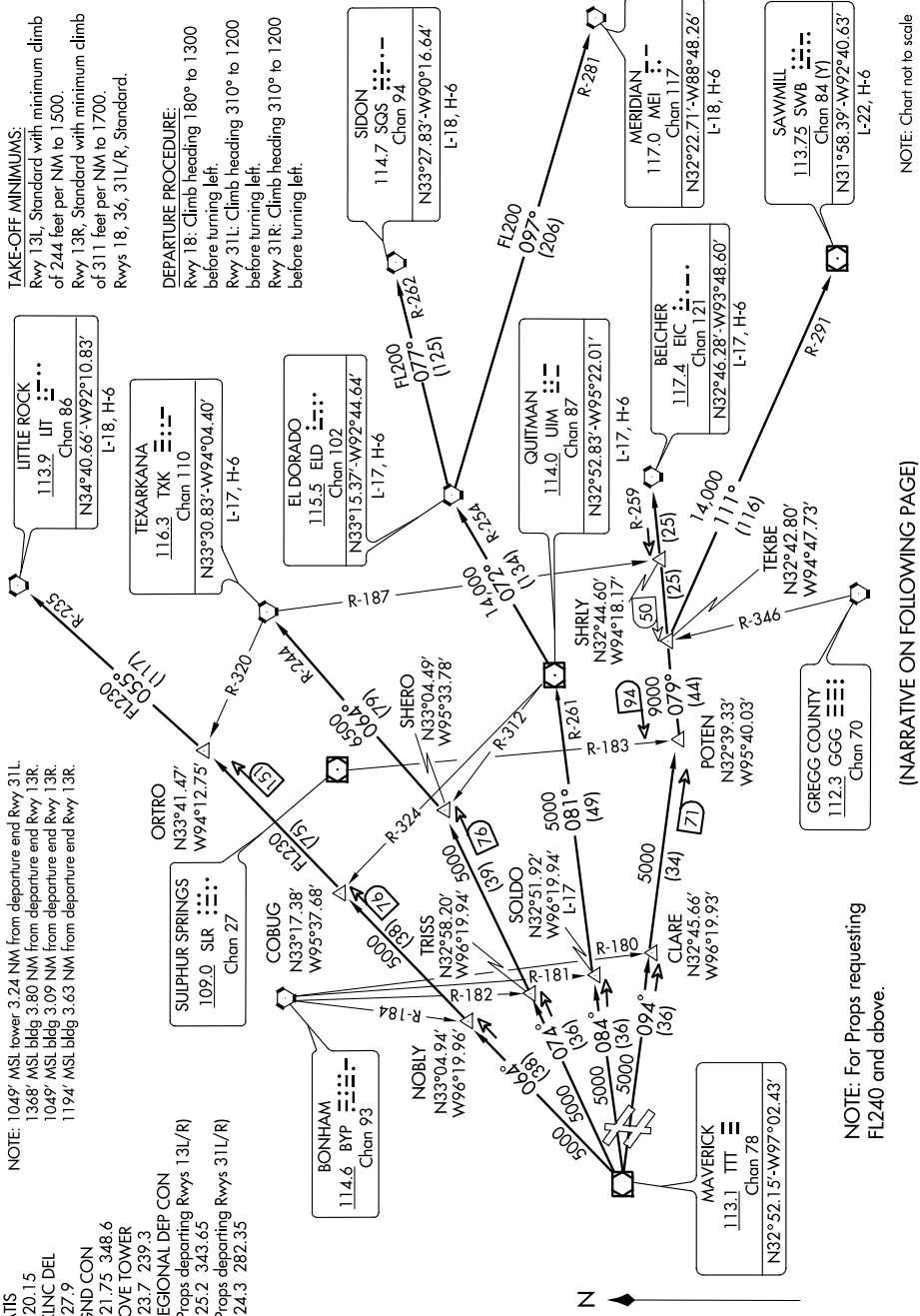


SC-2, 07 FEB 2013 to 07 MAR 2013



TAKE-OFF MINIMUMS:
 Rwy 13L: Standard with minimum climb of 244 feet per NM to 1500.
 Rwy 18: Standard with minimum climb of 311 feet per NM to 1700.
 Rwy 31L/R: Standard.

DEPARTURE PROCEDURE:
 Rwy 18: Climb heading 180° to 1300 before turning left.
 Rwy 31L: Climb heading 310° to 1200 before turning left.
 Rwy 31R: Climb heading 310° to 1200 before turning left.

NOTE: 1049' MSL tower 3.24 NM from departure end Rwy 31L.
 1368' MSL bldg 3.80 NM from departure end Rwy 13R.
 1049' MSL bldg 3.09 NM from departure end Rwy 13R.
 1194' MSL bldg 3.63 NM from departure end Rwy 13R.

ATIS 120.15
 CLNC DEL 127.9
 GND CON 121.75 348.6
 LOVE TOWER 123.7 239.3
 REGIONAL DEP CON (Props departing Rwy 13L/R) 125.2 343.65
 (Props departing Rwy 31L/R) 124.3 282.35

NOTE: For Props requesting FL240 and above.

(NARRATIVE ON FOLLOWING PAGE)

NOTE: Chart not to scale