

# RNAV (GPS) Z RWY 13R

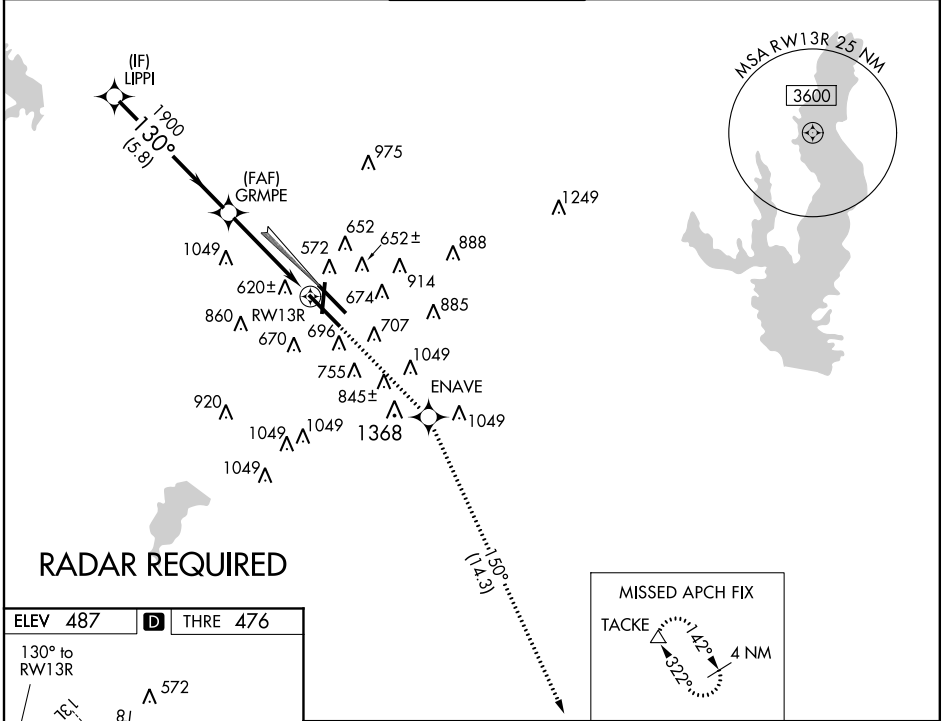
DALLAS-LOVE FIELD (DAL)

APP CRS <b>130°</b>	Rwy Idg <b>8310</b>
	THRE <b>476</b>
	Apt Elev <b>487</b>

**▼** When VGSI inop, Circling Rwy 18/36 NA at night. For uncompensated Baro-VNAV systems, LNAV/VNAV NA below -15°C (5°F) or above 47°C (116°F). DME/DME RNP-0.3 NA.  
**▲** Simultaneous approach authorized with Rwy 13L. LNAV procedure NA during simultaneous operations. Use of FD or AP providing RNAV track guidance required during simultaneous operations.

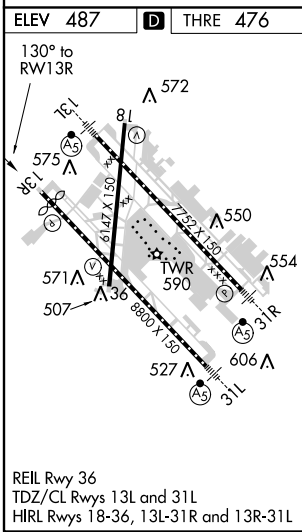
**MISSED APPROACH:**  
 Climb to 3000 direct ENAVE and on track 150° to TACKE and hold.

ATIS <b>120.15</b>	REGIONAL APP CON NORTH <b>124.3 282.275</b> SOUTH <b>125.2 343.65</b>	LOVE TOWER <b>123.7 239.3</b>	GND CON <b>121.75 348.6</b>	CLNC DEL <b>127.9</b>
-----------------------	---	----------------------------------	--------------------------------	--------------------------

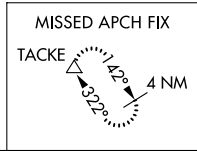


SC-2, 07 FEB 2013 to 07 MAR 2013

SC-2, 07 FEB 2013 to 07 MAR 2013



REIL Rwy 36  
 TDZ/CL Rwys 13L and 31L  
 HIRL Rwys 18-36, 13L-31R and 13R-31L



LIPPI <b>2500</b>	GRMPE <b>1900</b>	ENAVE tr 150°	TACKE △	*LNAV only
GS 3.00° TCH 53	5.8 NM	2 NM	2.3 NM	
CATEGORY	A	B	C	D
LNAV/VNAV DA	946-1½ 470 (500-1½)			
LNAV MDA	1260/55 784 (800-1¼)	1260/60 784 (800-1¼)	1260-2½	784 (800-2½)
CIRCLING	1260-1 773 (800-1)	1260-1¼ 773 (800-1¼)	1260-2½	773 (800-2½)