

WAAS CH 99723 W13A	APP CRS 130°	Rwy Idg 7752 THRE 477 Apt Elev 487
--	------------------------	---

RNAV (GPS) Z RWY 13L

DALLAS-LOVE FIELD (DAL)

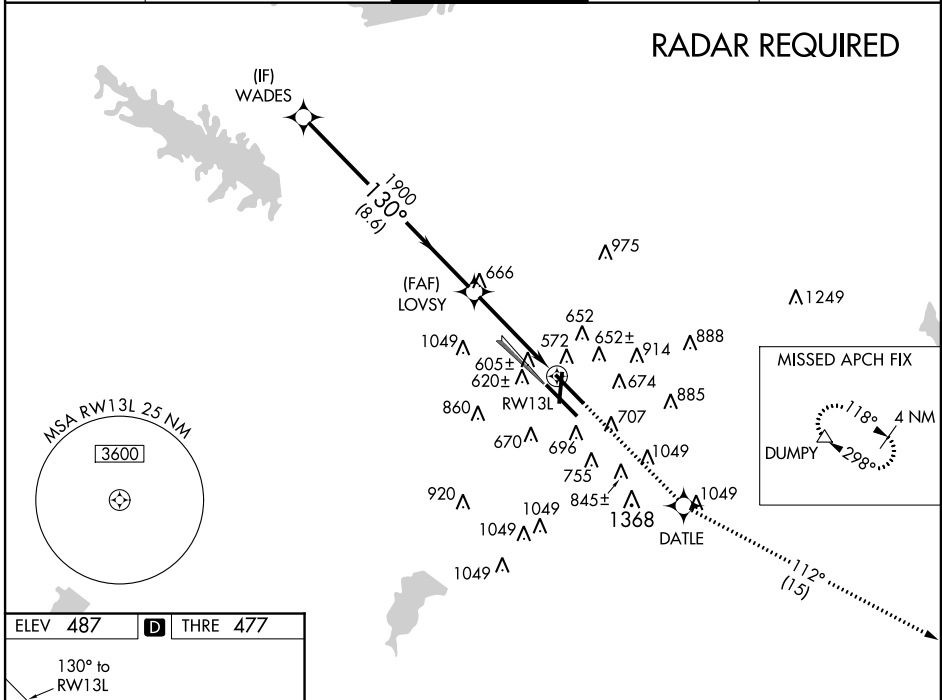
When VGSI inop, Circling Rwy 18/36 NA at night. For uncompensated Baro-VNAV systems, LNAV/VNAV NA below -15°C (5°F) or above 41°C (105°F). DME/DME RNP-0.3 NA. Simultaneous approach authorized with Rwy 13R. Use of FD or AP providing RNAV track guidance required during simultaneous operations. LNAV procedure NA during simultaneous operations.



MISSED APPROACH:
Climb to 3000 direct DATLE and on track 112° to DUMPY and hold.

ATIS 120.15	REGIONAL APP CON NORTH 124.3 282.275 SOUTH 125.2 343.65	LOVE TOWER 123.7 239.3	GND CON 121.75 348.6	CLNC DEL 127.9
-----------------------	---	----------------------------------	--------------------------------	--------------------------

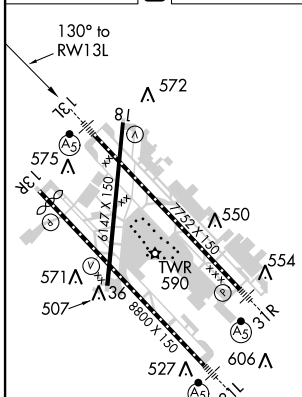
RADAR REQUIRED



SC-2, 07 FEB 2013 to 07 MAR 2013

SC-2, 07 FEB 2013 to 07 MAR 2013

ELEV 487	D	THRE 477
-----------------	----------	-----------------



REIL Rwy 36
TDZ/CL Rwys 13L
and 31L
HIRL Rwys 18-36,
13L-31R and 13R-31L

	WADES	LOVSY	3000	DATLE	DUMPY
	2500	1900	↑	✧	△
	130°		*1.2 NM to RW13L		*LNAV only.
	1900		RW13L		
	8.6 NM		3.1 NM		1.2 NM
CATEGORY	A	B	C	D	
LPV DA	677/24		200 (200-½)		
LNAV/VNAV DA	945/60		468 (500-1¼)		
LNAV MDA	920/24	443 (500-½)	920/45	443 (500-¾)	
CIRCLING	1020-1	533 (600-1)	1020-1½	1160-2¼	673 (700-2¼)