

DALLAS, TEXAS

AL-106 (FAA)

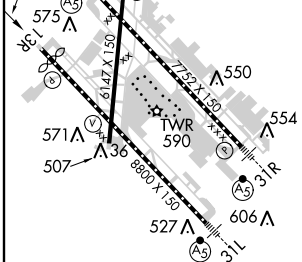
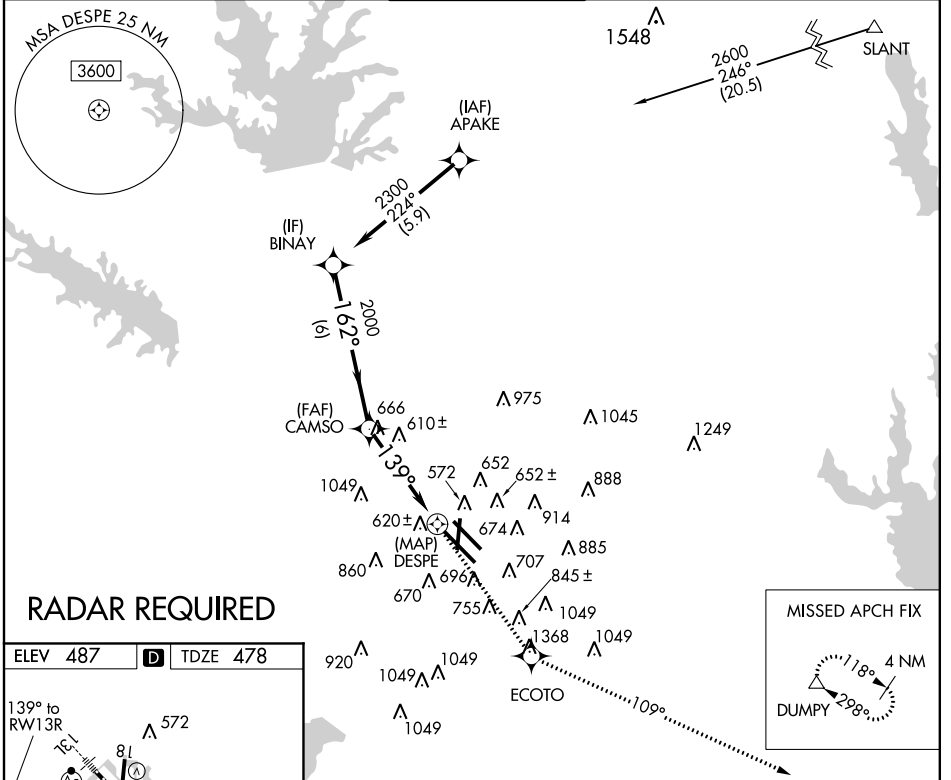
# RNAV (GPS) Y RWY 13R

DALLAS-LOVE FIELD (DAL)

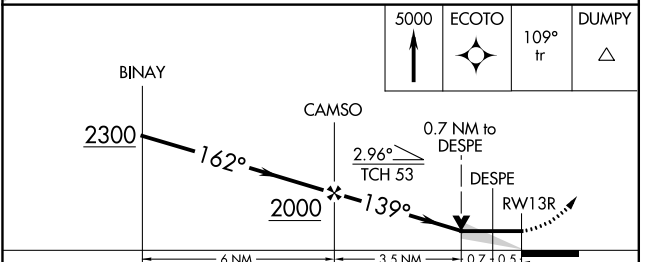
APP CRS <b>139°</b>	Rwy Idg <b>8310</b>
	TDZE <b>478</b>
	Apt Elev <b>487</b>

<b>▽</b> DME/DME RNP-0.3 NA.	MISSED APPROACH: Climb to 5000 direct ECOTO and via 109° track to DUMPY and hold, continue climb-in-hold to 5000.
<b>▲</b> Visibility reduction by helicopters NA.	

ATIS <b>120.15</b>	REGIONAL APP CON NORTH <b>124.3 282.275</b> SOUTH <b>125.2 343.65</b>	LOVE TOWER <b>123.7 (CTAF) 239.3</b>	GND CON <b>121.75 348.6</b>	CLNC DEL <b>127.9</b>
-----------------------	---	---	--------------------------------	--------------------------



REIL Rwy 36  
TDZ/CL Rwys 13L and 31L  
HIRL Rwys 18-36, 13L-31R and 13R-31L



CATEGORY	A	B	C	D
LNAV MDA	920-1	442 (500-1)	920-1¼ 442 (500-1¼)	920-1½ 442 (500-1½)
CIRCLING	1020-1	533 (600-1)	1020-1½ 533 (600-1½)	1160-2¼ 673 (700-2¼)

DALLAS, TEXAS  
Orig 13010

32° 51' N - 96° 51' W

# RNAV (GPS) Y RWY 13R

SC-2, 07 FEB 2013 to 07 MAR 2013

SC-2, 07 FEB 2013 to 07 MAR 2013