

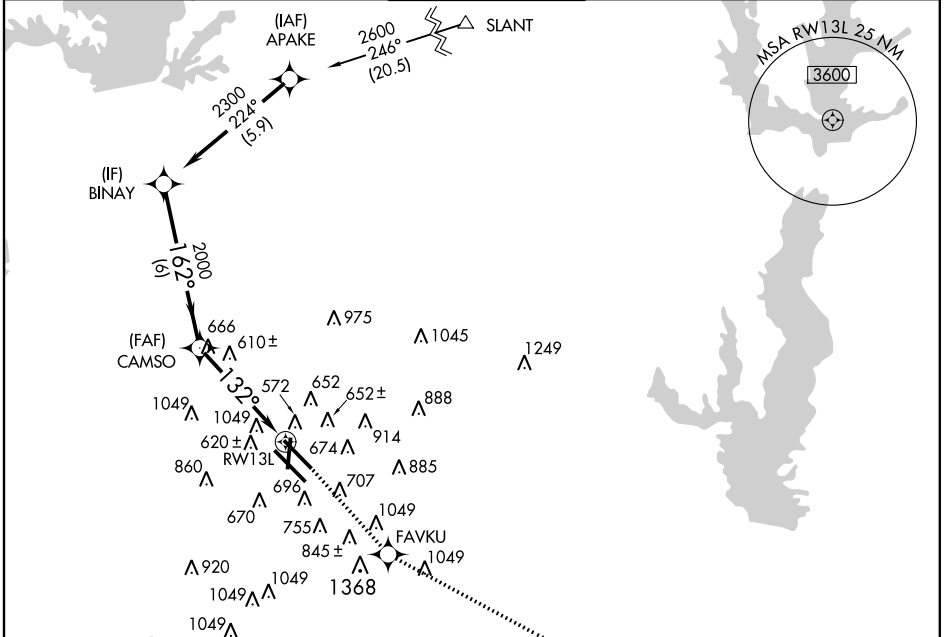
# RNAV (GPS) Y RWY 13L

DALLAS-LOVE FIELD (DAL)

APP CRS <b>132°</b>	Rwy Idg <b>7752</b>
	TDZE <b>485</b>
	Apt Elev <b>487</b>

<b>▽</b> <b>▲</b>	DME/DME RNP-0.3 NA.	MALSR 	MISSED APPROACH: Climb to 5000 direct FAVKU and via 112° TRK to DUMPY and hold, continue climb-in-hold to 5000.
----------------------	---------------------	-----------	---

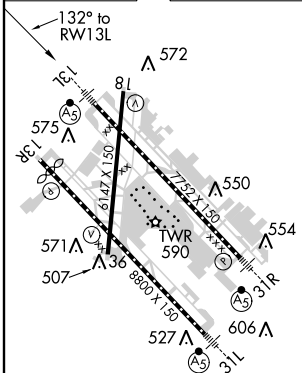
ATIS <b>120.15</b>	REGIONAL APP CON NORTH <b>124.3 282.275</b> SOUTH <b>125.2 343.65</b>	LOVE TOWER <b>123.7 (CTAF) 239.3</b>	GND CON <b>121.75 348.6</b>	CLNC DEL <b>127.9</b>
-----------------------	---	---	--------------------------------	--------------------------



SC-2, 07 FEB 2013 to 07 MAR 2013

SC-2, 07 FEB 2013 to 07 MAR 2013

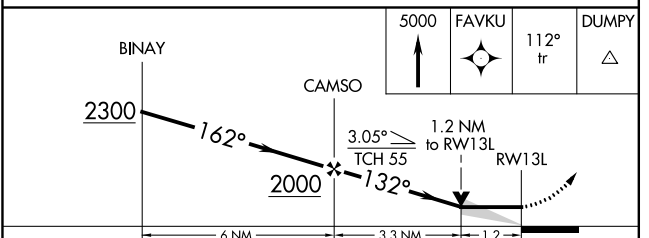
ELEV <b>487</b>	<b>D</b>	TDZE <b>485</b>
-----------------	----------	-----------------



REIL Rwy 36  
TDZ/CL Rws 13L  
and 31L  
HIRL Rws 18-36,  
13L-31R and 13R-31L

DALLAS, TEXAS  
Orig 13010

## RADAR REQUIRED



CATEGORY	A	B	C	D
LNAV MDA	920/24	435 (500-½)	920/40 435 (500-¾)	920/50 435 (500-1)
CIRCLING	1020-1	533 (600-1)	1020-1½ 533 (600-½)	1160-2¼ 673 (700-2¼)

32° 51' N - 96° 51' W

# RNAV (GPS) Y RWY 13L

DALLAS-LOVE FIELD (DAL)