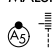


WAAS CH 87123 W31B	APP CRS 310°	Rwy Idg 7752 THRE 487 Apt Elev 487
--	------------------------	---

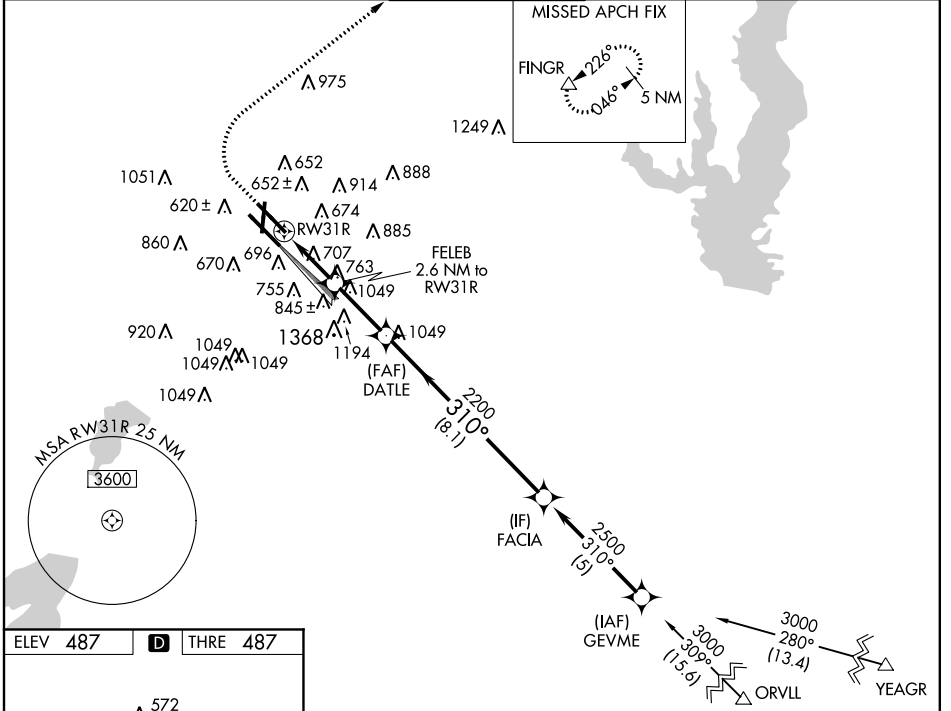
RNAV (GPS) RWY 31R

DALLAS-LOVE FIELD (DAL)

⚠ Circling to Rwy 18-36 NA at night. For uncompensated Baro-VNAV systems, LNAV/VNAV NA below -15°C (5°F) or above 40°C (104°F). Simultaneous approach authorized with Rwy 31L. DME/DME RNP-0.3 NA. LNAV procedure NA during simultaneous operations. Use of FD or AP providing RNAV track guidance required during simultaneous operations.

MALSR

MISSED APPROACH: Climbing right turn to 5000 direct FINGR and hold.

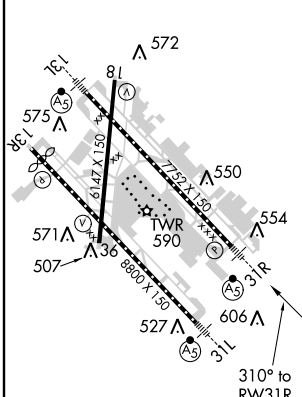
ATIS 120.15	REGIONAL APP CON NORTH 124.3 282.275 SOUTH 125.2 343.65	LOVE TOWER 123.7(CTAF) 239.3	GND CON 121.75 348.6	CLNC DEL 127.9
-----------------------	---	--	--------------------------------	--------------------------



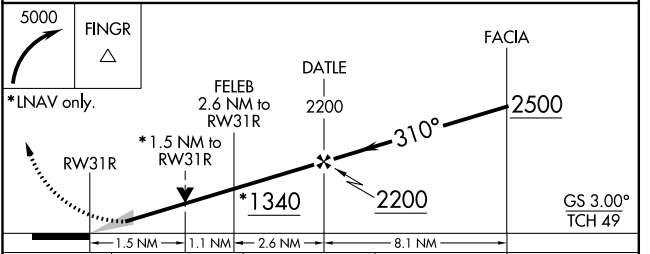
SC-2, 07 FEB 2013 to 07 MAR 2013

SC-2, 07 FEB 2013 to 07 MAR 2013

ELEV 487	D	THRE 487
-----------------	----------	-----------------



REIL Rwy 36
TDZ/CL Rwy 13L and 31L
HIRL Rwy 18-36, 13L-31R and 13R-31L



CATEGORY	A	B	C	D
LPV DA		687/24	200 (200-½)	
LNAV/VNAV DA		1031-1⅓	544 (600-1⅓)	
LNAV MDA	1020/24	533 (600-½)	1020/55	533 (600-1¼)
CIRCLING	1020-1	533 (600-1)	1020-1½ 533 (600-1½)	1160-2¼ 673 (700-2¼)