


WAAS CH 72808 W31A	APP CRS 310°	Rwy Idg THRE 476 Apt Elev 487	8800
--	------------------------	--	-------------

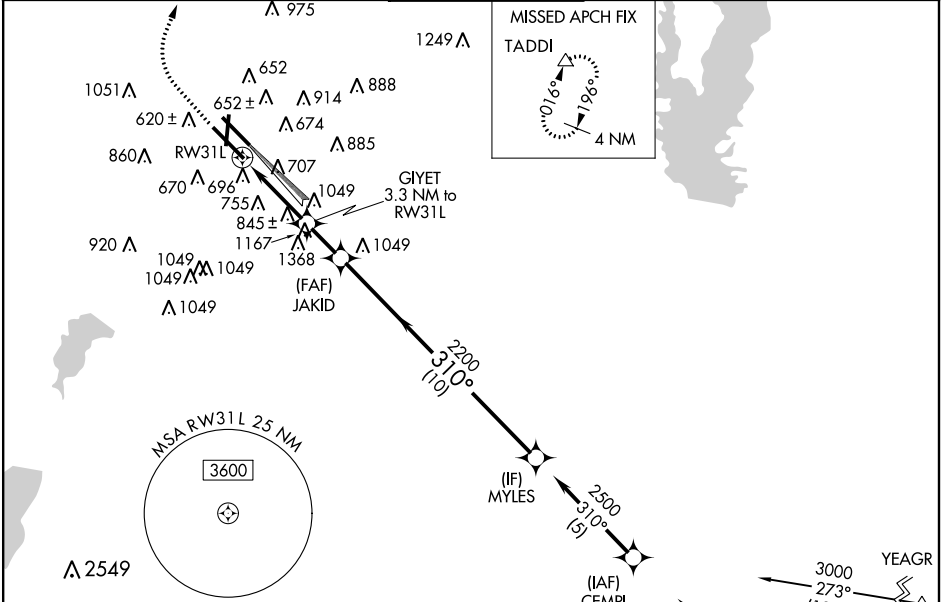
RNAV (GPS) RWY 31L

DALLAS-LOVE FIELD (DAL)

⚠ DME/DME RNP-0.3 NA. For inoperative MALS, increase LPV all Cats visibility to RVR 5000. Simultaneous approach authorized with Rwy 31R. When VGSi inop, Circling Rwy 18/36 NA at night. LNAV procedure NA during simultaneous operations. Use of FD or AP providing RNAV track guidance required during simultaneous operations.

MALS  MISSED APPROACH: Climb to 1700 then climbing right turn to 4000 direct TADDI and hold.

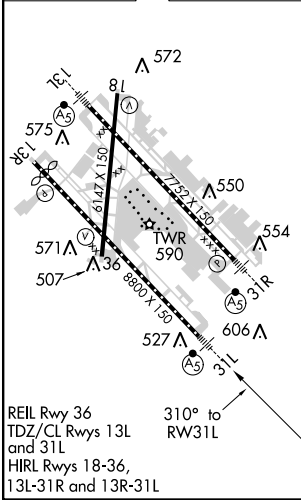
ATIS 120.15	REGIONAL APP CON NORTH 124.3 282.275 SOUTH 125.2 343.65	LOVE TOWER 123.7 (CTAF) 239.3	GND CON 121.75 348.6	CLNC DEL 127.9
-----------------------	---	---	--------------------------------	--------------------------



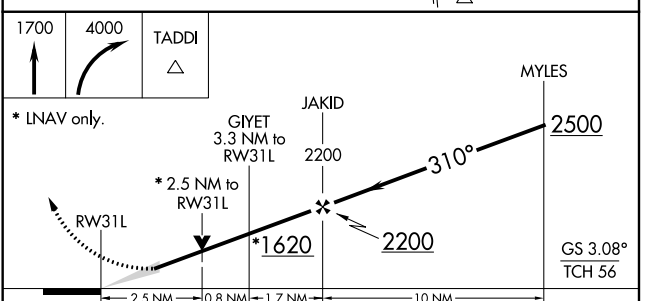
SC-2, 07 FEB 2013 to 07 MAR 2013

SC-2, 07 FEB 2013 to 07 MAR 2013

ELEV 487	D	THRE 476
----------	----------	----------



REIL Rwy 36
TDZ/CL Rwys 13L
and 31L
HIRL Rwys 18-36,
13L-31R and 13R-31L



CATEGORY	A	B	C	D
LPV DA	769/24 293 (300-½)			
LNAV MDA	1360/40	884 (900-¾)	1360-2¼ 884 (900-2¼)	1360-2½ 884 (900-2½)
CIRCLING	1360-1¼	873 (900-1¼)	1360-2¾ 873 (900-2¾)	1360-3 873 (900-3)