

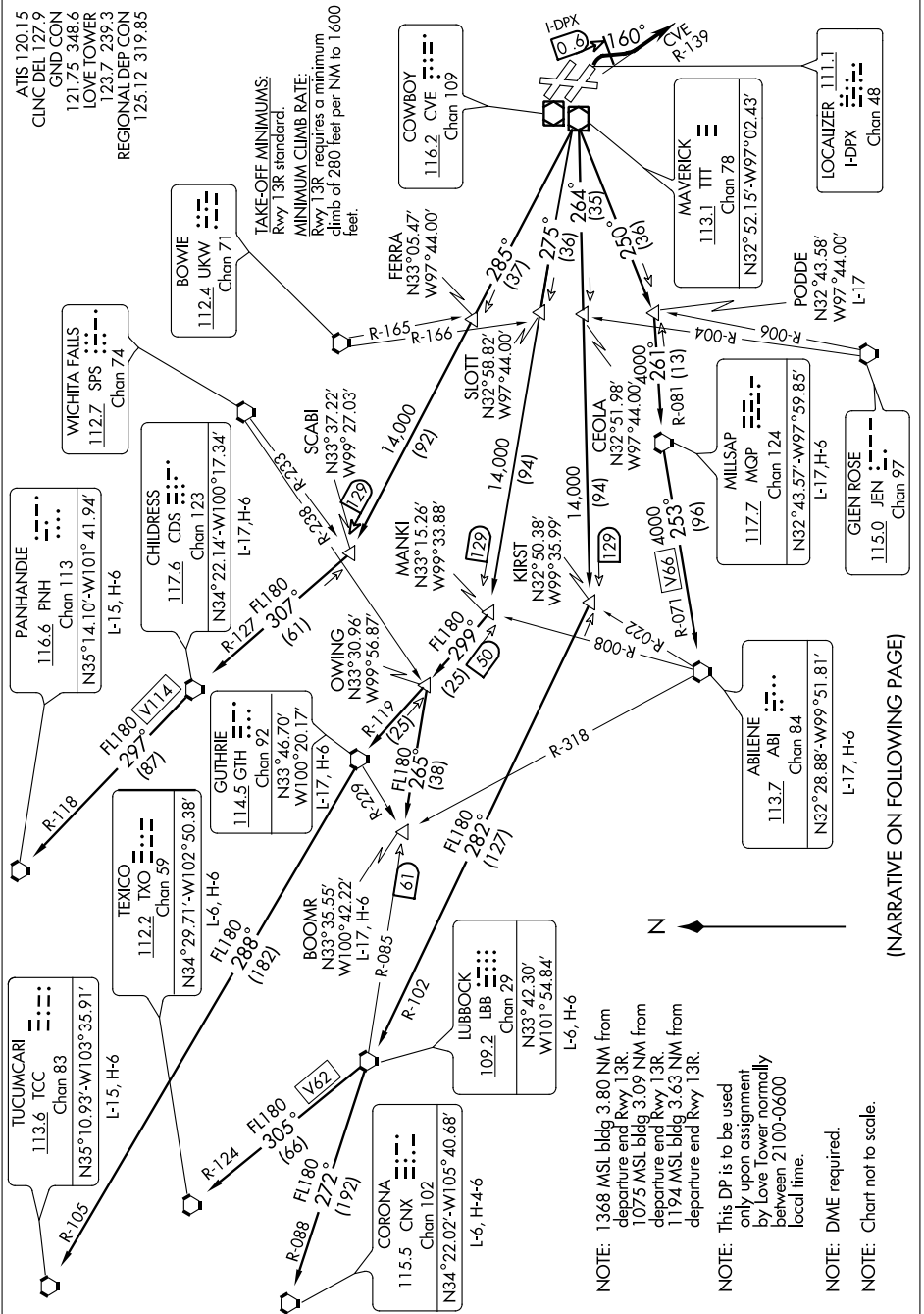
# LOVE TWO DEPARTURE

SL-106 (FAA)

DALLAS-LOVE FIELD (DAL)

DALLAS, TEXAS

SC-2, 07 FEB 2013 to 07 MAR 2013



NOTE: 1368 MSL bldg 3.80 NM from departure end Rwy 13R.  
 1075 MSL bldg 3.09 NM from departure end Rwy 13R.  
 1194 MSL bldg 3.63 NM from departure end Rwy 13R.

NOTE: This DP is to be used only upon assignment by Love Tower normally between 2100-0600 local time.

NOTE: DME required.

NOTE: Chart not to scale.

(NARRATIVE ON FOLLOWING PAGE)

SC-2, 07 FEB 2013 to 07 MAR 2013

# LOVE TWO DEPARTURE

DALLAS, TEXAS

DALLAS-LOVE FIELD (DAL)