

# JOE POOL FOUR DEPARTURE

SL-106 (FAA)

DALLAS-LOVE FIELD (D.A.I.)

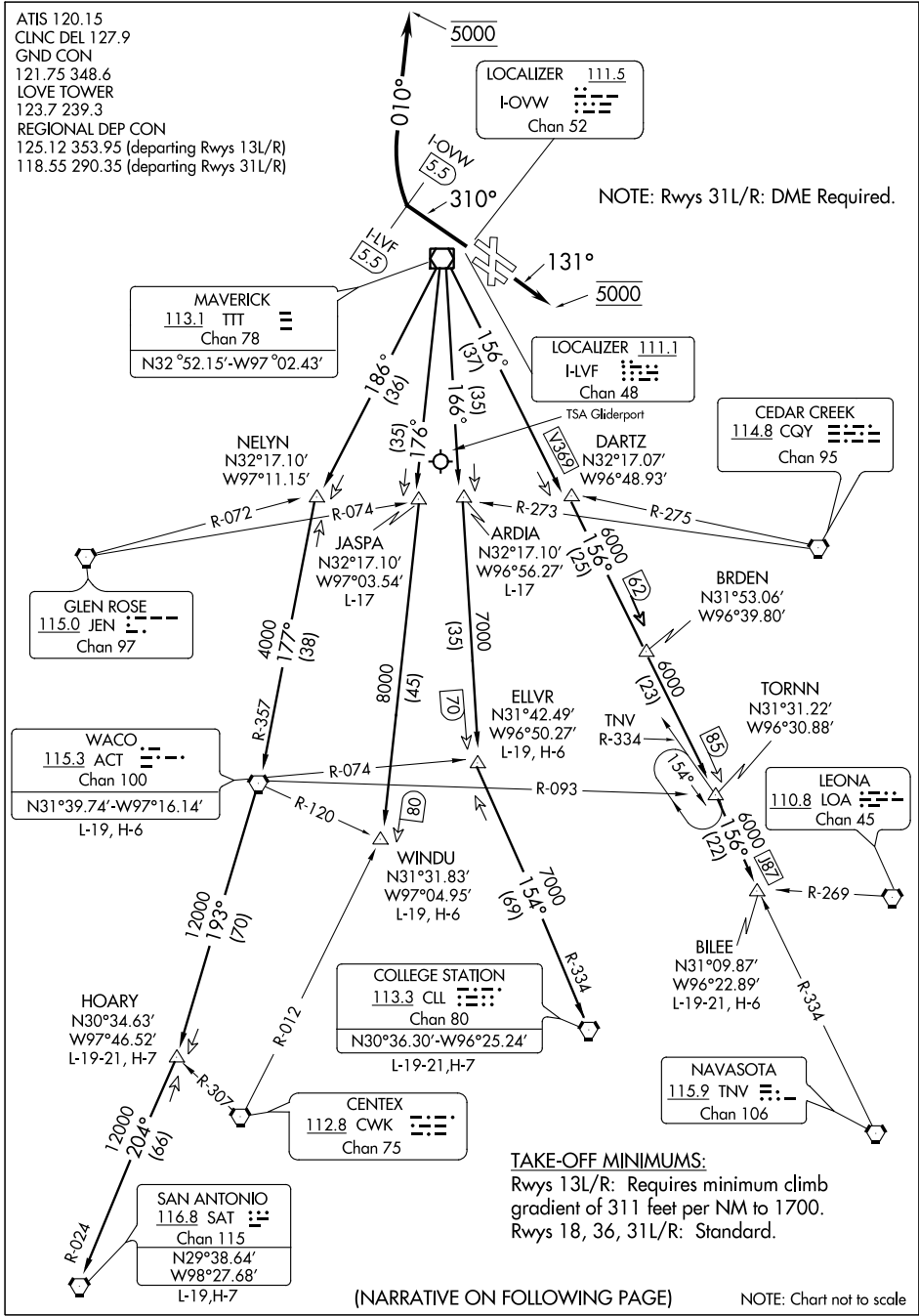
DALLAS, TEXAS

ATIS 120.15  
 CLNC DEL 127.9  
 GND CON  
 121.75 348.6  
 LOVE TOWER  
 123.7 239.3  
 REGIONAL DEP CON  
 125.12 353.95 (departing Rwy 13L/R)  
 118.55 290.35 (departing Rwy 31L/R)

NOTE: Rwy 31L/R: DME Required.

SC-2, 07 FEB 2013 to 07 MAR 2013

SC-2, 07 FEB 2013 to 07 MAR 2103



**TAKE-OFF MINIMUMS:**  
 Rwy 13L/R: Requires minimum climb gradient of 311 feet per NM to 1700.  
 Rwy 18, 36, 31L/R: Standard.

(NARRATIVE ON FOLLOWING PAGE) NOTE: Chart not to scale

# JOE POOL FOUR DEPARTURE