

LOC I-DPX 111.1 Chan 48	APP CRS 130°	Rwy Idg 8310 TDZE 478 Apt Elev 487
--------------------------------------	------------------------	---

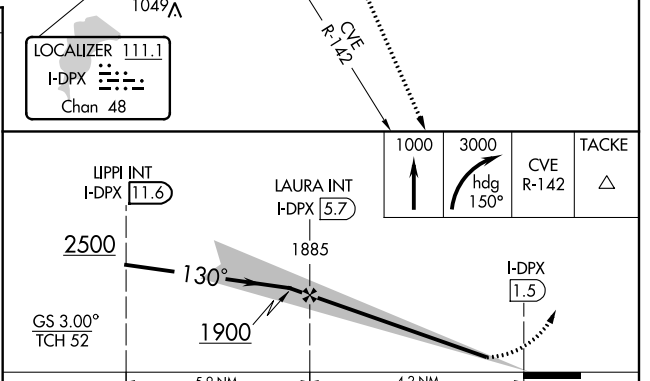
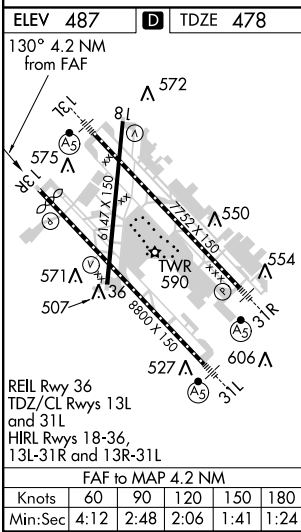
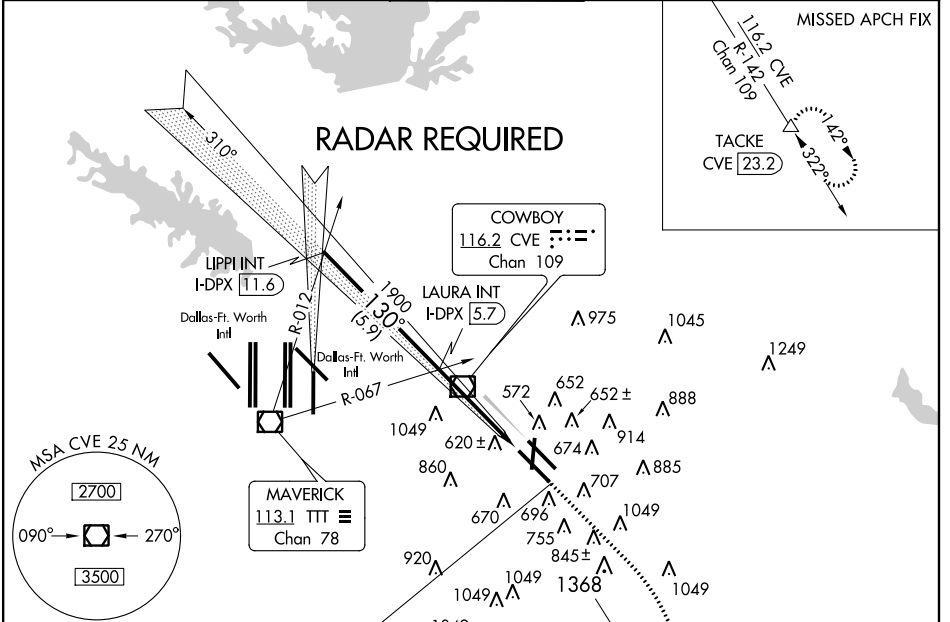
ILS or LOC Y RWY 13R

DALLAS-LOVE FIELD (DAL)

▼ When VGSI inop, Circling to Rwy 18/36 NA at night.
▲ Simultaneous approach authorized with Rwy 13L.
 Simultaneous approach authorized with DFW ILS or LOC Rwy 17L.
 DME required. Disregard outer marker indication.

MISSED APPROACH: Climb to 1000 then climbing right turn to 3000 on heading 150° and CVE R-142 to TACKE/CVE 23.2 DME and hold.

ATIS 120.15	REGIONAL APP CON NORTH 124.3 282.275 SOUTH 125.2 343.65	LOVE TOWER 123.7 (CTAF) 239.3	GND CON 121.75 348.6	CLNC DEL 127.9
-----------------------	---	---	--------------------------------	--------------------------



CATEGORY	A	B	C	D
S-ILS 13R		678- ³ / ₄	200 (200- ³ / ₄)	
S-LOC 13R	960-1	482 (500-1)	960-1 ¹ / ₄ 482 (500-1 ¹ / ₂)	960-1 ¹ / ₂ 482 (500-1 ¹ / ₂)
CIRCLING	1020-1	533 (600-1)	1020-1 ¹ / ₂ 533 (600-1 ¹ / ₂)	1160-2 ¹ / ₄ 673 (700-2 ¹ / ₄)

SC-2, 07 FEB 2013 to 07 MAR 2013

SC-2, 07 FEB 2013 to 07 MAR 2013