

LOC/DME I-LVF <b>111.1</b> Chan 48	APP CRS <b>310°</b>	Rwy Idg TDZE Apt Elev	<b>8000</b> <b>476</b> <b>487</b>
--	------------------------	-----------------------------	---

# I LS or LOC RWY 31L

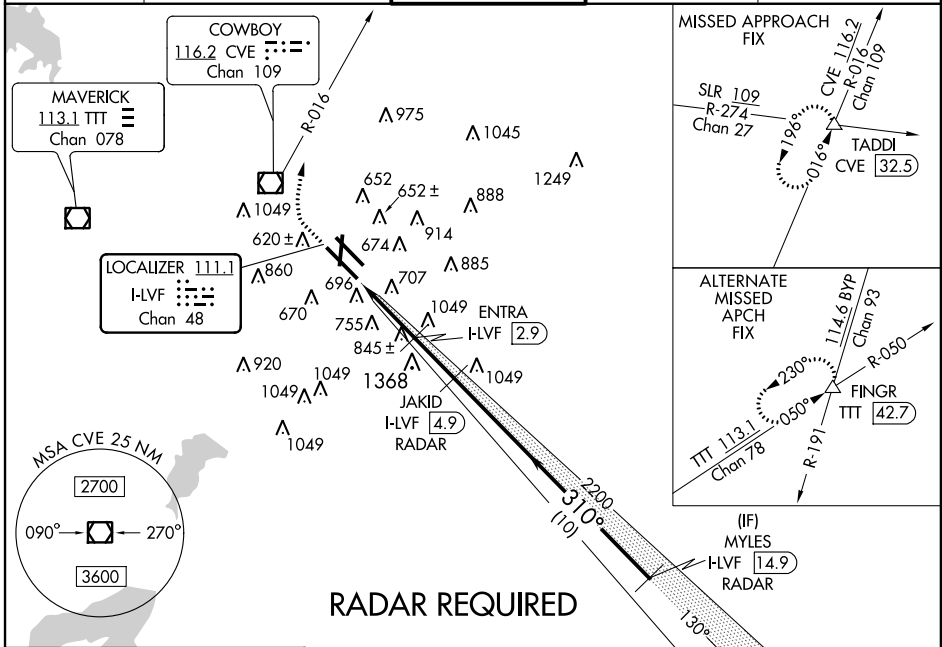
DALLAS-LOVE FIELD (DAL)

**▼** DME or RADAR required. Simultaneous approach authorized with Rwy 31R.  
**▲** MALSR



MISSED APPROACH: Climb to 4000 direct CVE  
 VOR/DME and on CVE R-016 to TADDI INT/CVE  
 32 DME and hold.

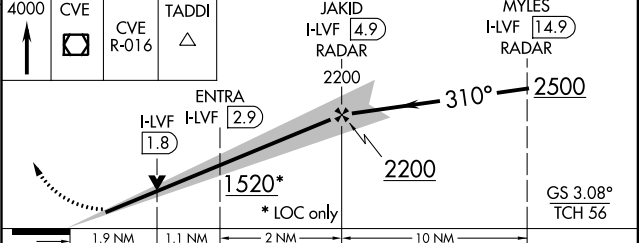
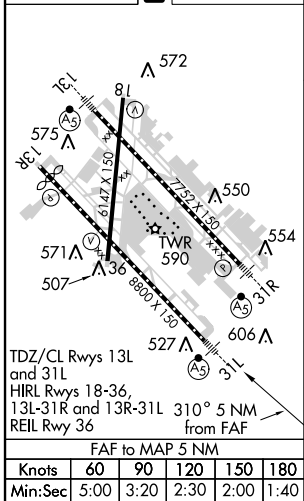
ATIS <b>120.15</b>	REGIONAL APP CON NORTH <b>124.3 282.275</b> SOUTH <b>125.2 343.65</b>	LOVE TOWER <b>123.7(CTAF) 239.3</b>	GND CON <b>121.75 348.6</b>	CLNC DEL <b>127.9</b>
-----------------------	---	--	--------------------------------	--------------------------



SC-2, 07 FEB 2013 to 07 MAR 2013

SC-2, 07 FEB 2013 to 07 MAR 2013

ELEV 487	<b>D</b>	TDZE 476
----------	----------	----------



CATEGORY	A	B	C	D
S-ILS 31L	676/18 200 (200-½)			
S-LOC 31L	1520/40 1044 (1100-¾)	1520/50 1044 (1100-1)	1520-2½	1044 (1100-2½)
CIRCLING	1520-1¼ 1033 (1100-1¼)	1520-1½ 1033 (1100-1½)	1520-3	1033 (1100-3)
ENTRA FIX MINIMUMS				
S-LOC 31L	1160/24 684 (700-½)	1160-1½ 684 (700-1½)	1160-1¾ 684 (700-1¾)	1160-2¼ 684 (700-2¼)
CIRCLING	1160-1 673 (700-1)	673 (700-1)	1160-2 673 (700-2)	1160-2¼ 673 (700-2¼)