


LOC/DME I-OVW 111.5 Chan 52	APP CRS 312°	Rwy Idg THRE Apt Elev 7752 487 487
--	------------------------	--

ILS RWY 31R (SA CAT II)

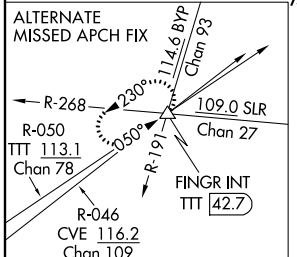
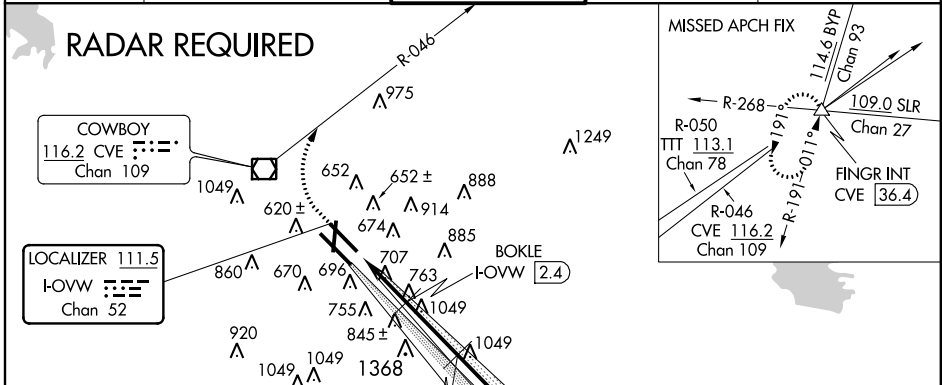
DALLAS-LOVE FIELD (DAL)

⚠ DME or RADAR required. Reduced lighting: Requires specific OPSPEC, MSPEC or LAO approval and use of autoland or HUD to touchdown. Simultaneous approach authorized with Rwy 31L.

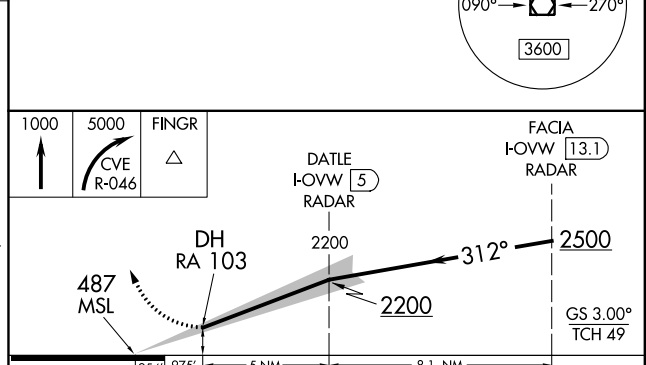
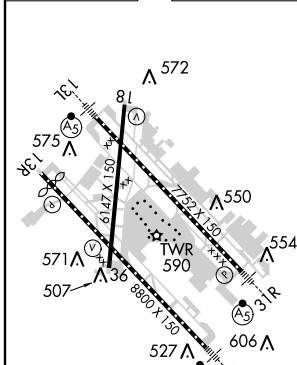
MALSR 

MISSED APPROACH: Climb to 1000 then climbing right turn to 5000 on Heading 330 and CVE R-046 to FINGR INT/CVE 36.4 DME and hold.

ATIS 120.15	REGIONAL APP CON NORTH 124.3 282.275 SOUTH 125.2 343.65	LOVE TOWER 123.7 (CTAF) 239.3	GND CON 121.75 348.6	CLNC DEL 127.9
-----------------------	---	---	--------------------------------	--------------------------



ELEV 487	D	THRE 487
----------	----------	----------



CATEGORY	A	B	C	D
S-ILS 31R	RA 103/12 100 DA 587			

SA CATEGORY II ILS - SPECIAL AIRCREW & AIRCRAFT CERTIFICATION REQUIRED

REIL Rwy 36
TDZE/CL Rwys 13L and 31L
HIRL Rwys 18-36, 13L-31R and 13R-31L

SC-2, 07 FEB 2013 to 07 MAR 2013

SC-2, 07 FEB 2013 to 07 MAR 2013