

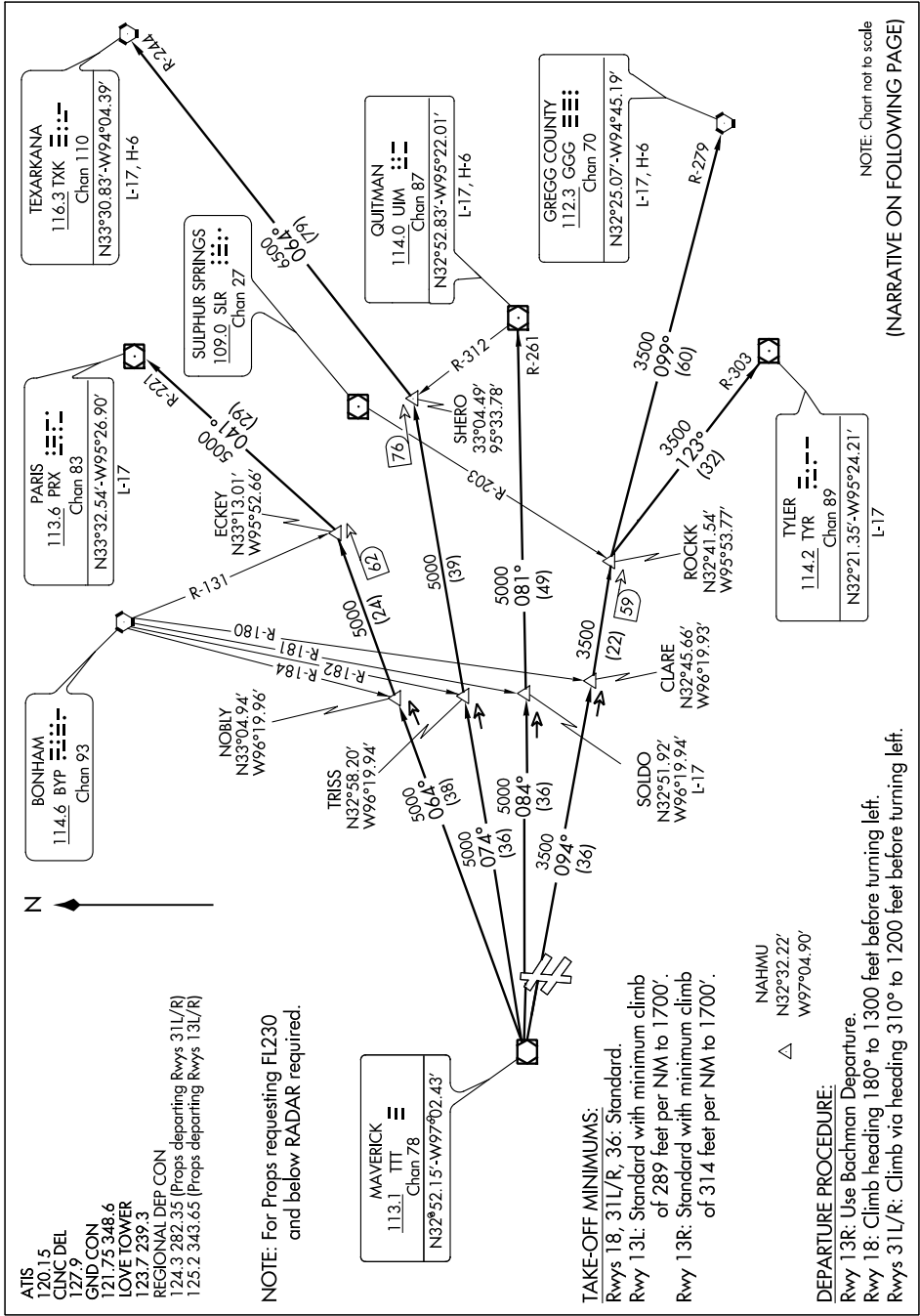
HUBBARD SIX DEPARTURE

SL-106 (FAA)

DALLAS-LOVE FIELD (DAL)

DALLAS, TEXAS

SC-2, 07 FEB 2013 to 07 MAR 2013



- ATIS 120.15
- CLNC DEL 127.9
- GND CON 121.75
- LOVE TOWER 123.7
- REGIONAL DEP CON 123.7
- Rwys 31L/R 124.3
- Rwys 13L/R 125.2

NOTE: For Props requesting FL230 and below RADAR required.

MAVERICK
 113.1 TTT
 Chan 78
 N33°52.15'-W97°02.43'

TAKE-OFF MINIMUMS:
 Rwy 18, 31L/R, 36: Standard
 Rwy 13L: Standard with minimum climb of 289 feet per NM to 1700'.
 Rwy 13R: Standard with minimum climb of 314 feet per NM to 1700'.

NAHMU
 N32°32.22'
 W97°04.90'

DEPARTURE PROCEDURE:

Rwy 13R: Use Bachman Departure.
 Rwy 18: Climb heading 180° to 1300 feet before turning left.
 Rwy 31L/R: Climb via heading 310° to 1200 feet before turning left.

TYLER
 114.2 TYR
 Chan 89
 N32°21.35'-W95°24.21'

NOTE: Chart not to scale
 (NARRATIVE ON FOLLOWING PAGE)

HUBBARD SIX DEPARTURE

SC-2, 07 FEB 2013 to 07 MAR 2013