

VORTAC DAG <b>113.2</b> Chan <b>79</b>	APP CRS <b>224°</b>	Rwy Idg TDZE <b>1918</b> Apt Elev <b>1930</b>	<b>5123</b>
--	------------------------	---	-------------

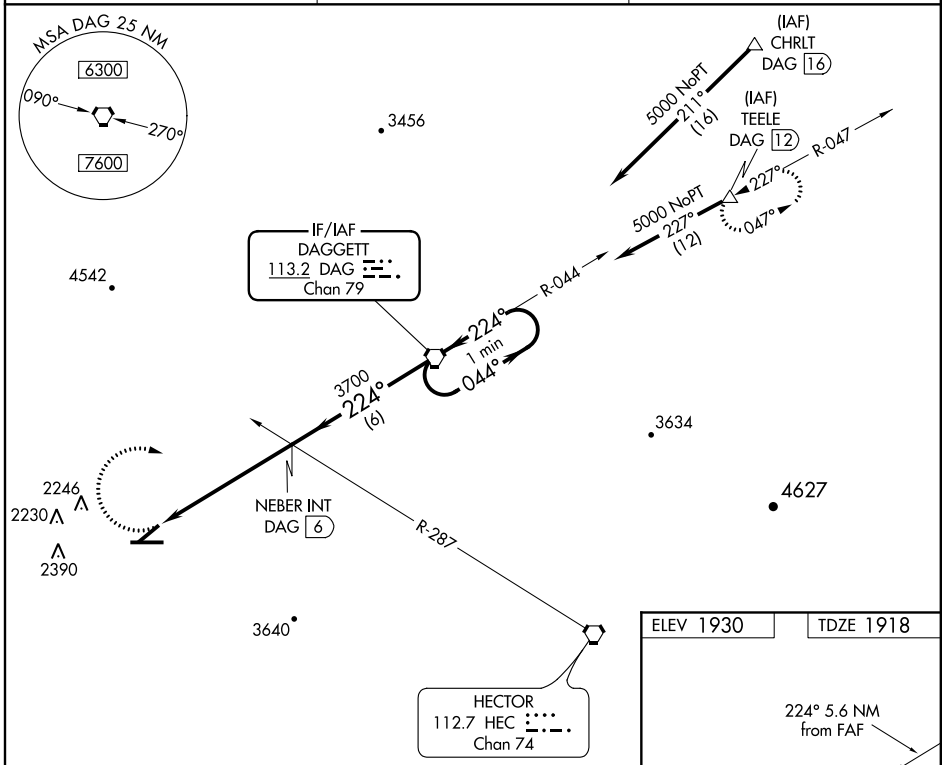
# VOR or TACAN RWY 22

DAGGETT/BARSTOW-DAGGETT (DAG)

**▼** Circling NA for Cat D south of Rwy 8-26.  
**▲** Visibility reduction by helicopters NA.  
 When local altimeter setting not received, use Victorville altimeter setting and increase all MDA 220 feet.

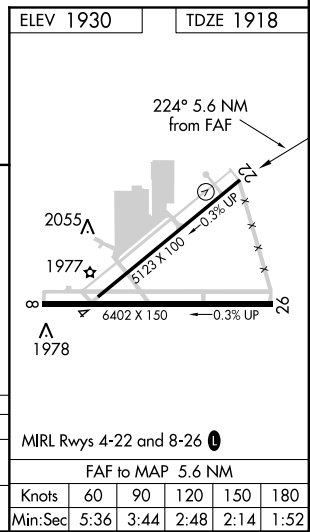
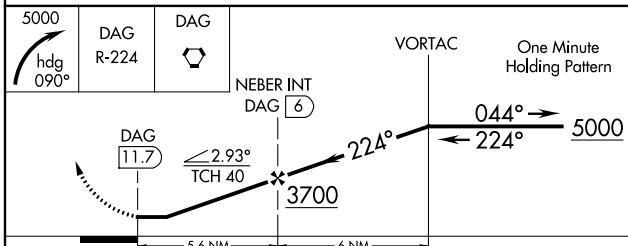
**MISSED APPROACH:** Climbing right turn to 5000 via heading 090° and via DAG VORTAC R-224 to DAG VORTAC and hold (TACAN aircraft climb to 6000 via DAG VORTAC R-047 to TEELE/DAG 12 DME and hold NE, LT 227° inbound). When authorized by ATC climb in holding to 7500.

ASOS <b>132.175</b>	LOS ANGELES CENTER <b>132.5 284.7</b>	UNICOM <b>123.0 (CTAF) 0</b>
------------------------	--	---------------------------------



SW-3, 07 FEB 2013 to 07 MAR 2013

SW-3, 07 FEB 2013 to 07 MAR 2013



CATEGORY	A	B	C	D
S-22	3160-1¼ 1242 (1300-1¼)	3440-1½ 1522 (1600-1½)	3440-3 1522 (1600-3)	3540-3 1622 (1700-3)
CIRCLING	3160-1¼ 1230 (1300-1¼)	3440-1½ 1510 (1600-1½)	3440-3 1510 (1600-3)	3540-3 1610 (1700-3)