

WAAS CH 72813 W26A	APP CRS 255°	Rwy Idg TDZE Apt Elev	6402 1918 1930
--	------------------------	-----------------------------	---

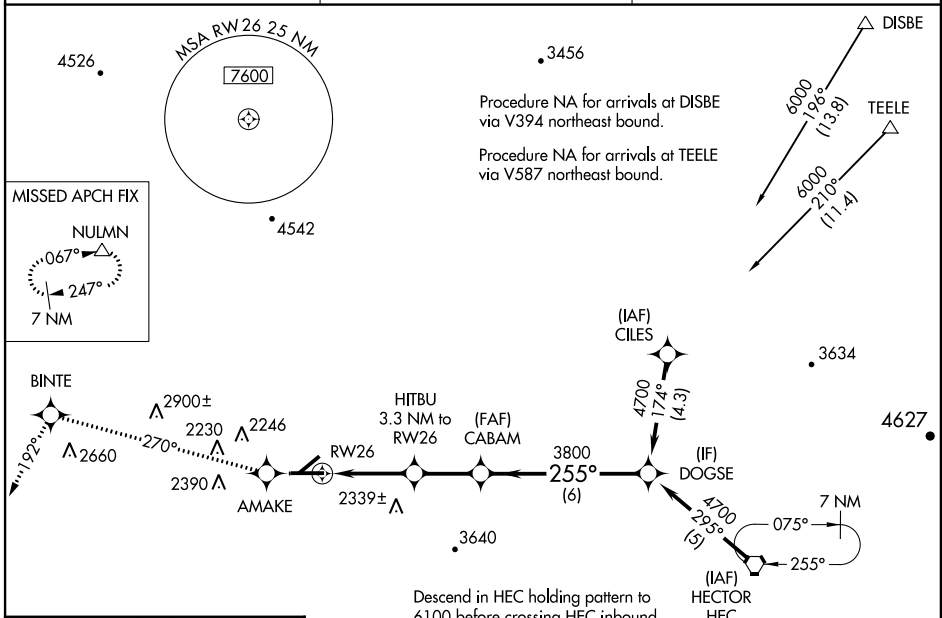
RNAV (GPS) RWY 26

DAGGETT/BARSTOW-DAGGETT (DAG)

▼ Circling NA for Cat D south of Rwy 8-26. DME/DME RNP-0.3 NA. Visibility reduction by helicopters NA. VDP NA when using Victorville altimeter setting. When local altimeter setting not received, use Victorville altimeter setting and increase all DA 211 feet and all MDA 220 feet. Increase LPV DA # Cats A/B/C ¼ mile, Cat D ½ mile. Increase LPV DA all Cats visibility ¾ mile, LNAV Cat A/B ¼ mile, Cat C ¾ mile, Cat D ½ mile, Circling Cats A/B/C ¼ mile. #Missed approach requires minimum climb of 220 feet per NM to 8000.

MISSED APPROACH: Climb to 8000 direct AMAKE and on track 270° to BINTE and on track 192° to NULMN and hold, continue climb-in-hold to 8000.

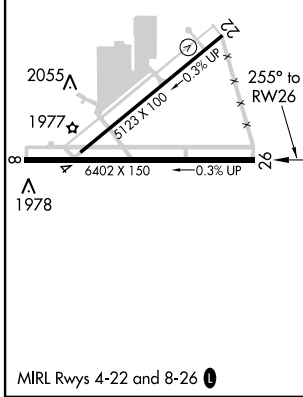
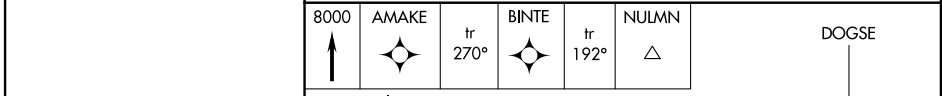
ASOS 132.175	LOS ANGELES CENTER 132.5 284.7	UNICOM 123.0 (CTAF) 0
------------------------	--	---------------------------------



SW-3, 07 FEB 2013 to 07 MAR 2013

SW-3, 07 FEB 2013 to 07 MAR 2013

ELEV 1930	TDZE 1918
------------------	------------------



	8000	AMAKE	BINTE	NULMN	DOGSE
	▲	✧	tr 270°	tr 192°	△
	*LNAV only				
	RW26	HITBU 3.3 NM to RW26	CABAM 3800	4700	Procedure Turn NA
	2.3 NM	1 NM	2.4 NM	6 NM	GS 3.00° TCH 55
CATEGORY	A	B	C	D	
LPV DA#	2217-1 299 (300-1)				
LPV DA	2438-1¾ 520 (600-1¾)				
LNAV MDA	2700-1 782 (800-1)	2700-1¼ 782 (800-1¼)	2700-2¼ 782 (800-2¼)	2700-2½ 782 (800-2½)	
CIRCLING	2700-1 770 (800-1)	2780-1¼ 850 (900-1¼)	2860-2¾ 930 (1000-2¾)	2860-3 930 (1000-3)	