

APP CRS 216°	Rwy Idg TDZE Apt Elev	5123 1918 1930
------------------------	-----------------------------	---

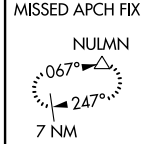
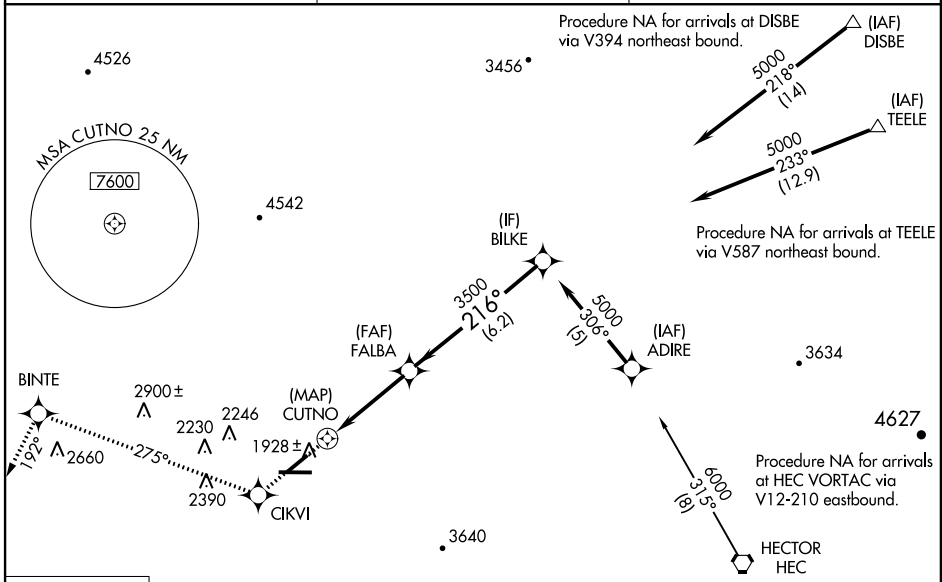
RNAV (GPS) RWY 22

DAGGETT/BARSTOW-DAGGETT (DAG)

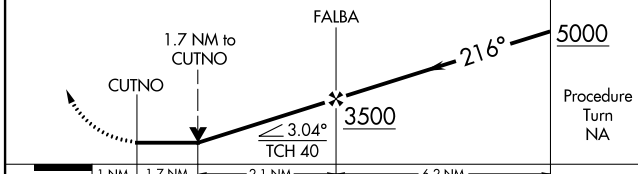
▼ Circling NA for Cat D south of Rwy 8-26. DME/DME RNP- 0.3 NA.
▲ Visibility reduction by helicopters NA.
 When local altimeter setting not received, use Victorville altimeter setting and increase all MDA 220 feet. Increase LNAV and Circling Cat B/C visibility ¼ mile.
 VDP NA when using Victorville altimeter setting.

MISSED APPROACH: Climb to 8000 direct CIKVI and on track 275° to BINTE and on track 192° to NULMN and hold, continue climb-in-hold to 8000.

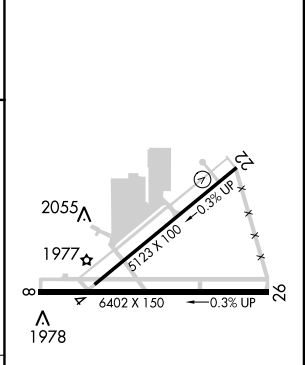
ASOS 132.175	LOS ANGELES CENTER 132.5 284.7	UNICOM 123.0 (CTAF) 0
------------------------	--	---------------------------------



8000	CIKVI	BINTE	NULMN
↑	✦	✦	△
	tr 275°	tr 192°	



ELEV 1930	TDZE 1918
-----------	-----------



CATEGORY	A	B	C	D
LNAV MDA	2800-1¼ 882 (900-1¼)	2800-2¾ 882 (900-2¾)	2800-3 882 (900-3)	2800-3 882 (900-3)
CIRCLING	2800-1¼ 870 (900-1¼)	2860-2¾ 930 (1000-2¾)	2860-3 930 (1000-3)	2860-3 930 (1000-3)

MIRL Rwy 4-22 and 8-26 0

SW-3, 07 FEB 2013 to 07 MAR 2013

SW-3, 07 FEB 2013 to 07 MAR 2013