

WAAS CH 82529 W03A	APP CRS 026°	Rwy Idg THRE 1503 Apt Elev 1503
--	------------------------	---

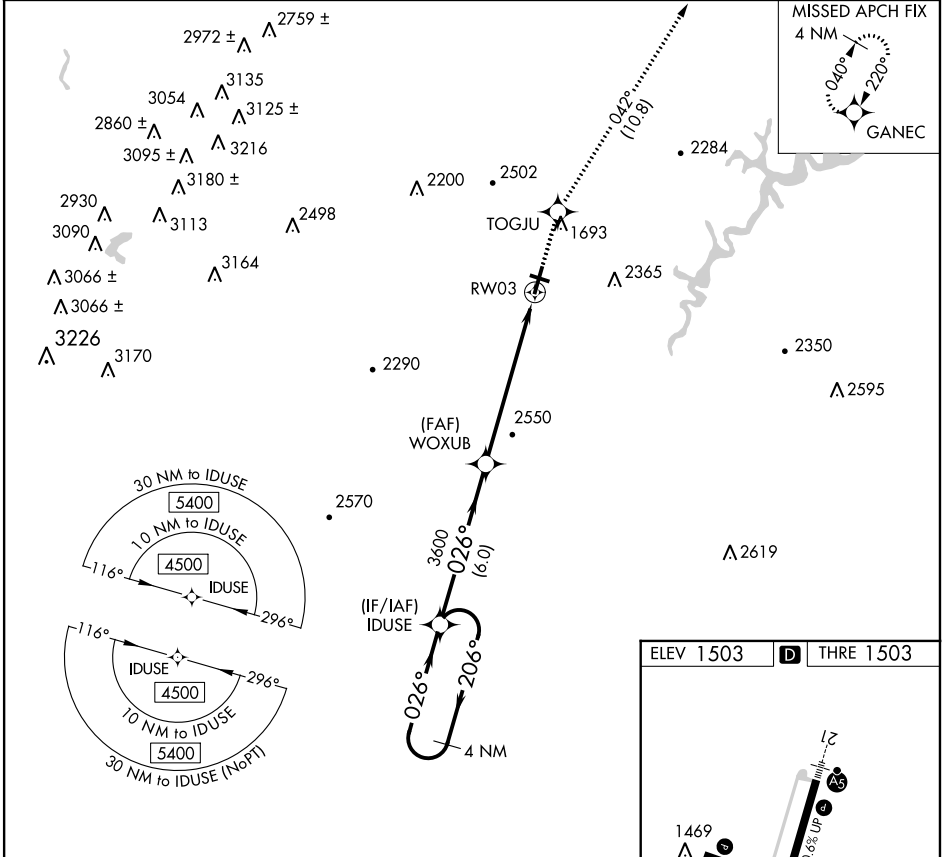
RNAV (GPS) Z RWY 3

ALTOONA-BLAIR COUNTY (A00)

▼ When VGSi inop, procedure NA at night. DME/DME RNP-0.3 NA.
▲ Visibility reduction by helicopters NA. When local altimeter setting not received, use Bedford County altimeter setting and increase all DA 84 feet, and increase all visibilities 3/8 mile.

MISSED APPROACH: Climb to 5000 direct TOGJU and on track 042° to GANEC and hold, continue Climb-in-hold to 5000.

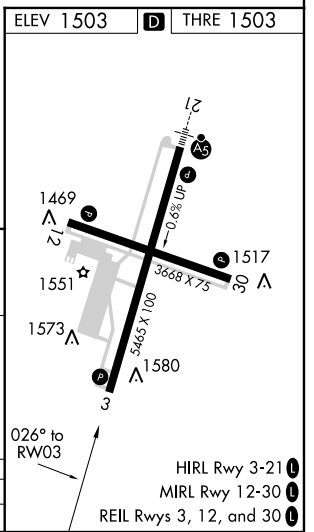
ASOS 127.125	JOHNSTOWN APP CON ★ 135.975 244.875	ALTOONA RADIO 123.6 (CTAF) 0	UNICOM 123.0
------------------------	---	--	------------------------



NE-4, 07 FEB 2013 to 07 MAR 2013

NE-4, 07 FEB 2013 to 07 MAR 2013

VGSi and RNAV glidepath not coincident. (VGSi Angle 3.00/TCH 43)				
4 NM Holding Pattern	IDUSE	WOXUB	RW03	GANEC
4500 ← 206°	→ 026°	3600	6.4 NM	tr 042°
GS 3.00°				
TCH 55				
CATEGORY	A	B	C	D
LPV DA		1828-1	325 (400-1)	



HIRL Rwy 3-21
 MIRL Rwy 12-30
 REIL Rws 3, 12, and 30