

ALTOONA, PENNSYLVANIA

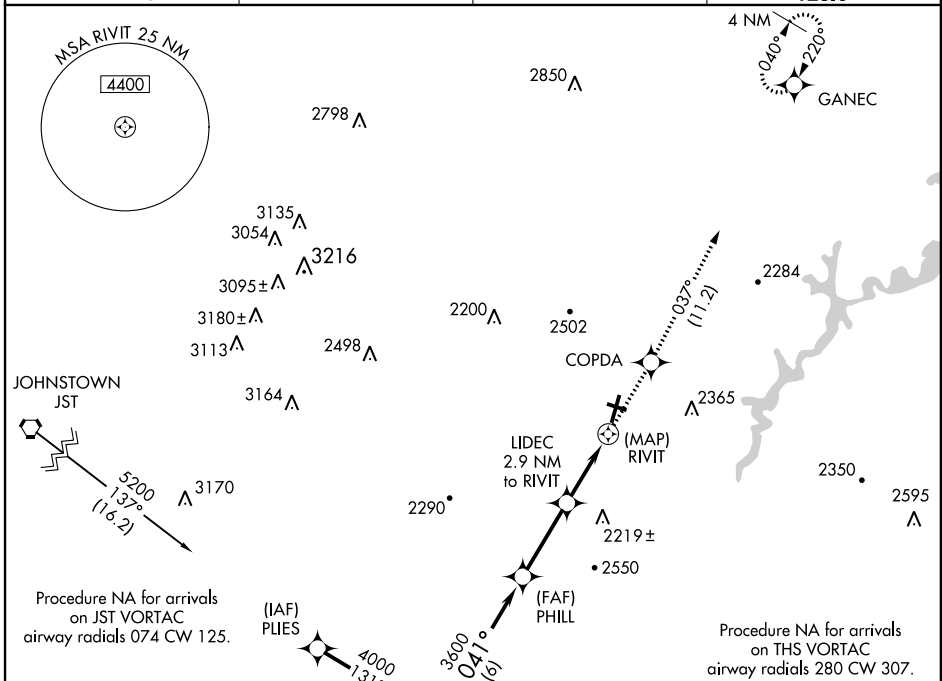
AL-100 (FAA)

RNAV (GPS) RWY 3

ALTOONA-BLAIR COUNTY (A00)

APP CRS 041°	Rwy Idg 5465
	TDZE 1504
	Apt Elev 1504

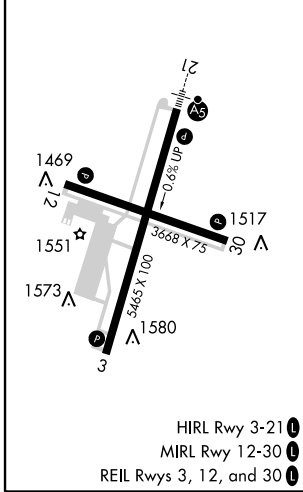
DME/DME RNP-0.3 NA.		MISSED APPROACH: Climb to 5000 direct COPDA and via 037° track to GANEC and hold.	
ASOS 127.125	JOHNSTOWN APP CON ★ 135.975 244.875	ALTOONA RADIO 123.6	CTAF ① 123.6



NE-4, 07 FEB 2013 to 07 MAR 2013

NE-4, 07 FEB 2013 to 07 MAR 2013

ELEV 1504	D	TDZE 1504
-----------	---	-----------



5000	COPDA	tr 037°	GANEC	PHILL	CRYSS
↑	✧		✧		
	RIVIT	LIDEC 2.9 NM to RIVIT		PHILL	CRYSS
				✧	✧
				3600	4000
				Procedure Turn NA	
	0.5	2.9	3.1 NM	6 NM	
CATEGORY	A		B	C	D
LNNAV MDA	2340-1 836 (900-1)	2340-1¼ 836 (900-1¼)	2340-2½ 836 (900-2½)	2340-2¾ 836 (900-2¾)	2340-2¾ 836 (900-2¾)
CIRCLING	2340-1 836 (900-1)	2340-1¼ 836 (900-1¼)	2340-2½ 836 (900-2½)	2340-2¾ 836 (900-2¾)	2620-3 1116 (1200-3)

ALTOONA, PENNSYLVANIA
Orig 12040

40°18'N-78°19'W

ALTOONA-BLAIR COUNTY (A00)
RNAV (GPS) RWY 3