

WAAS CH <b>90105</b> <b>W21A</b>	APP CRS <b>206°</b>	Rwy Idg THRE Apt Elev	<b>5465</b> <b>1469</b> <b>1503</b>
--	------------------------	-----------------------------	---

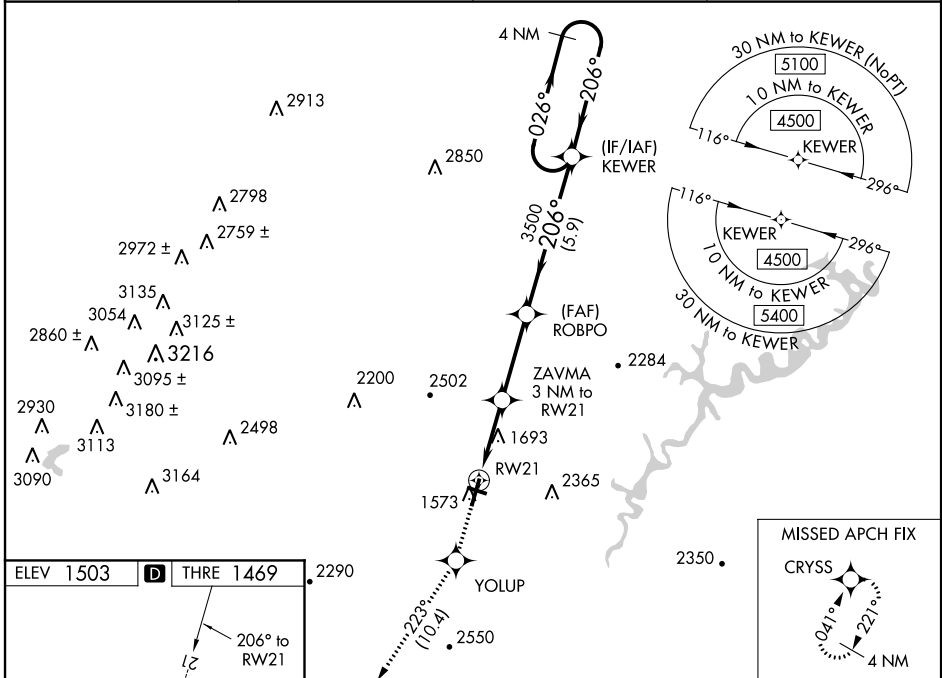
# RNAV (GPS) RWY 21

ALTOONA-BLAIR COUNTY (A00)

▼ Baro-VNAV NA when using Bedford County altimeter setting. For uncompensated Baro-VNAV systems, LNAV/VNAV NA below -17°C (2°F) or above 54°C (130°F). DME/DME RNP-0.3 NA.  
 ▲ For inoperative MALSR, increase LPV visibility all Cats to 1½ mile. For inoperative MALSR when using Bedford County altimeter setting, increase LPV and LNAV/VNAV all Cats visibility to 2 miles and increase LNAV Cats C, D visibility to 2½ miles. When local altimeter setting not received, use Bedford County altimeter setting and increase all DA 84 feet, increase all MDA 100 feet, and increase all LPV and LNAV/VNAV visibilities ¾ mile, and LNAV Cats B, C and D ¼ mile. When Rwy 3 VGSi inop, Circling Rwy 3 NA at night.

MISSED APPROACH:  
 Climb to 5000 direct YOLUP and on track 223° to CRYSS and hold, continue Climb-in-hold to 5000.

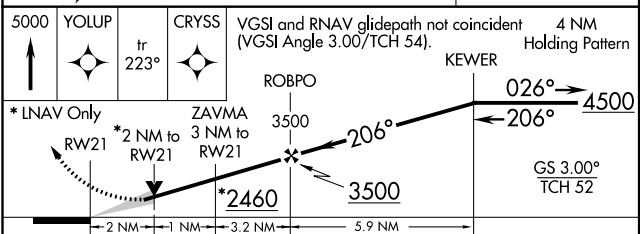
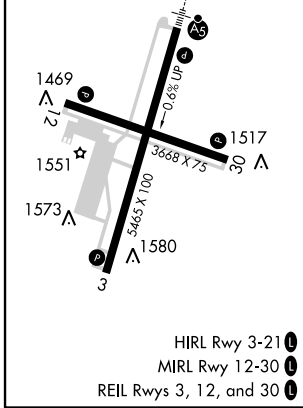
ASOS <b>127.125</b>	JOHNSTOWN APP CON * <b>135.975 244.875</b>	ALTOONA RADIO <b>123.6 (CTAF) ①</b>	UNICOM <b>123.0</b>
------------------------	---	--	------------------------



NE-4, 07 FEB 2013 to 07 MAR 2013

NE-4, 07 FEB 2013 to 07 MAR 2013

ELEV 1503	<b>D</b> THRE 1469
-----------	--------------------



CATEGORY	A	B	C	D
LPV DA		1960-1½	491 (500-1½)	
LNAV/VNAV DA		1982-1¼	513 (500-1¼)	
LNAV MDA	2160-½	691 (700-½)	2160-½	691 (700-½)
CIRCLING	2160-1	657 (700-1)	2160-2	2620-3
			657 (700-2)	1117 (1200-3)