

WORRY ONE DEPARTURE (WORRY1 • WORRY)

CORPUS CHRISTI, TEXAS

ATIS ★
 114.0 127.9 290.9
 CLNC DEL
 314.3
 GND CON
 118.7 257.85
 NAVY CORPUS TOWER ★
 134.85 340.2 (N)
 125.525 360.2 (S)
 CORPUS CHRISTI DEP CON
 128.675 343.75

THREE RIVERS
 111.4 THX
 Chan 51

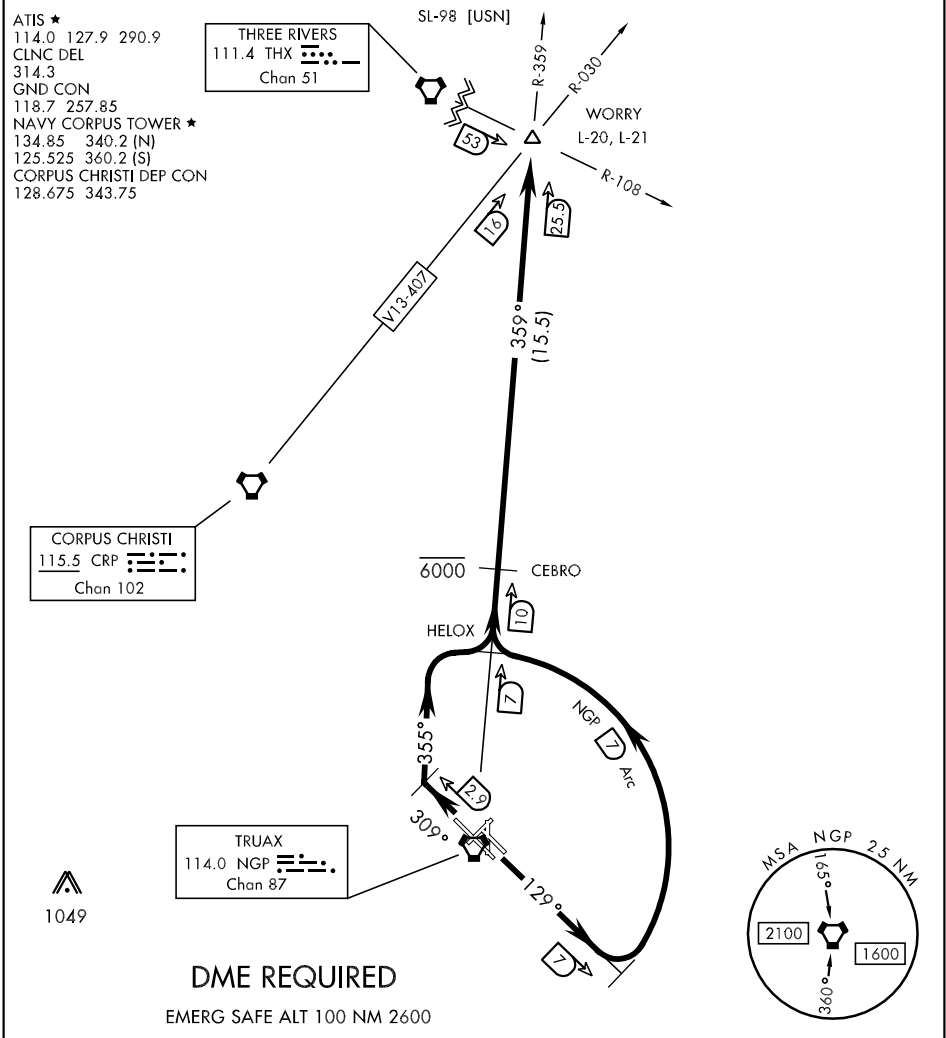
SL-98 [USN]

R-359
 R-030
 WORRY
 L-20, L-21
 R-108

CORPUS CHRISTI
 115.5 CRP
 Chan 102

TRUAX
 114.0 NGP
 Chan 87


 1049



DME REQUIRED

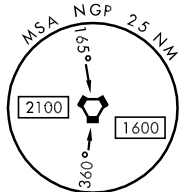
EMERG SAFE ALT 100 NM 2600

DEPARTURE ROUTE DESCRIPTION

TAKE-OFF RWY 13L/R: Climb via heading 129° to intercept NGP VORTAC 7 DME Arc. Arc CCW north of NGP via 7 DME arc to HELOX, NGP R-359/7. Thence,

TAKE-OFF RWY 31L/R: Climb via heading 309° to NGP VORTAC 2.9 DME, then climbing right turn via heading 355° to intercept NGP 7 DME Arc. Arc CW North of NGP via 7 DME arc to HELOX, NGP R-359/7 DME. Thence...

THENCE....from HELOX via NGP VORTAC R-359 to WORRY, NGP R-359/25.5 DME. Cross CEBRO, NGP R-359/10 DME at or below 6000. Then via assigned route. Expect clearance to filed altitude/flight level 10 minutes after departure.



SC-3, 07 FEB 2013 to 07 MAR 2013

SC-3, 07 FEB 2013 to 07 MAR 2013

WORRY ONE DEPARTURE (WORRY1 • WORRY)

CORPUS CHRISTI, TEXAS

CORPUS CHRISTI NAS (TRUAX FLD) (KNGP)