

CORPUS CHRISTI, TEXAS

VOR/DME Z or TACAN Z RWY 13R

VORTAC NGP 114.0 Chan 87	APCH CRS 143°	Rwy Idg TDZE Arprt Elev 8002 13 18
----------------------------------------------	-------------------------	------------------------------------------------------------------------

AL-98 [USN] CORPUS CHRISTI NAS (TRUAX FLD) (KNGP)

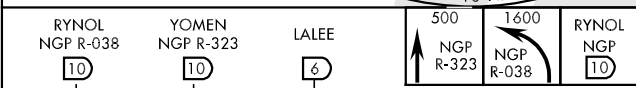
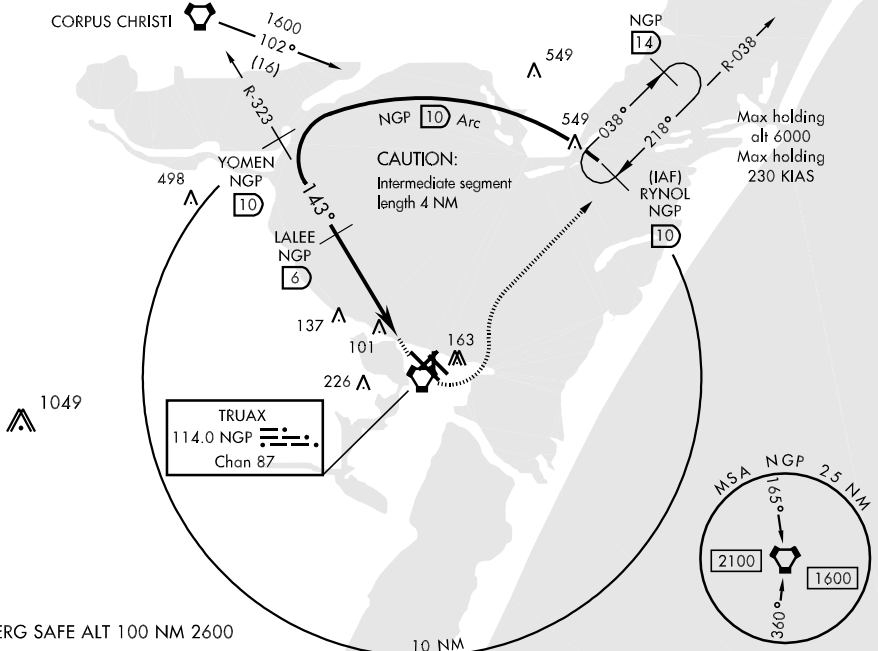
▽ * When ALS inop, increase CAT ABC vis to 1 mile, CAT D vis to 1 ¼ miles.



MISSED APPROACH: Climb to 500 via NGP VORTAC R-323, then climbing left turn to 1600 via NGP R-038 to RYNOL and hold.

ATIS * 114.0 127.9 290.9	CORPUS CHRISTI APP CON 128.675 343.75	NAVY CORPUS TOWER * 134.85 340.2 (N) 125.525 360.2 (S)	GND CON 118.7 257.85	CLNC DEL 314.3	ASR/PAR
------------------------------------	-------------------------------------------------	----------------------------------------------------------------------------	--------------------------------	--------------------------	---------

When local altimeter setting not received, use Corpus Christi altimeter setting.

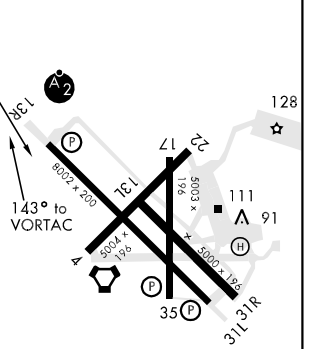


ELEV 18	TDZE 13
---------	---------

CATEGORY	A	B	C	D
S-13R *	360-¾	347	(400-¾)	360-1 347 (400-1)
CIRCLING	480-1	462 (500-1)	480-1½ 462 (500-1½)	580-2 562 (600-2)

CORPUS CHRISTI ALTIMETER SETTING

S-13R *	400-¾	387	(400-¾)	400-1 387 (400-1)
CIRCLING	500-1	482 (500-1)	500-1½ 482 (500-1½)	580-2 562 (600-2)



REIL Rwy 13R-31L
HIRL Rwy 13R-31L, 04-22
HIRL Rwy 13L-31R, 17-35

CORPUS CHRISTI, TEXAS
Amdt 3 11265

27°42'N-97°17'W CORPUS CHRISTI NAS (TRUAX FLD) (KNGP)

VOR/DME Z or TACAN Z RWY 13R

SC-3, 07 FEB 2013 to 07 MAR 2013

SC-3, 07 FEB 2013 to 07 MAR 2013