

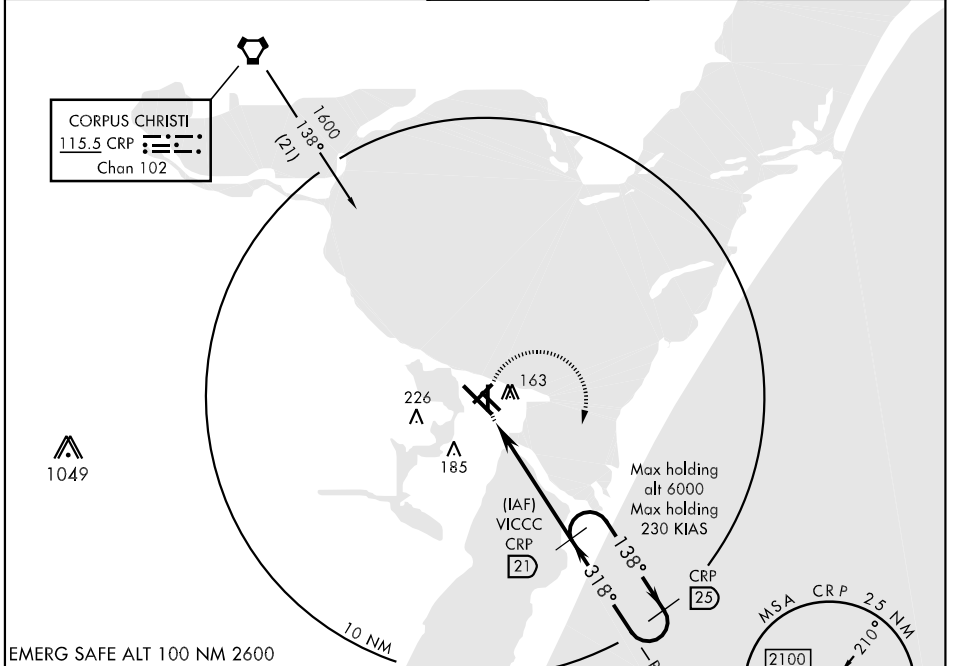
CORPUS CHRISTI, TEXAS

VORTAC CRP <b>115.5</b> Chan <b>102</b>	APCH CRS <b>318°</b>	Rwy Idg TDZE <b>17</b> Arpt Elev <b>18</b>	<b>8002</b>
---	-------------------------	--	-------------

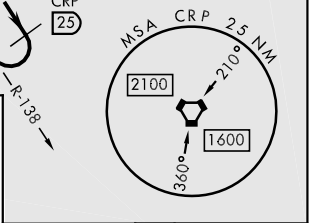
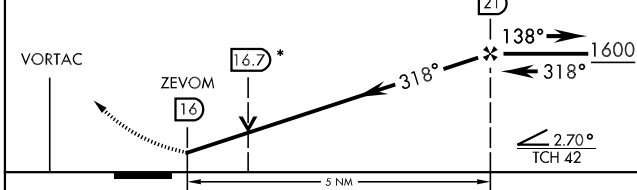
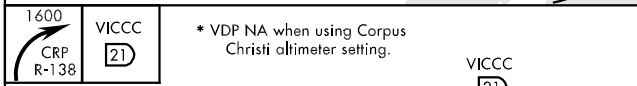
# VOR/DME Y or TACAN Y RWY 31L

AL-98 [USN] CORPUS CHRISTI NAS (TRUAX FLD) (KNGP)

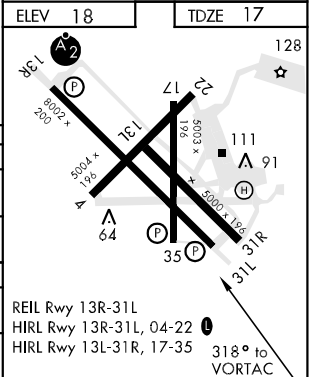
<p>When local altimeter setting not received, use Corpus Christi altimeter setting.</p>		<p>MISSED APPROACH: Climbing right turn to 1600, intercept CRP VORTAC R-138 outbound to VICCC and hold.</p>			
<p>ATIS ★ <b>114.0 127.9 290.9</b></p>	<p>CORPUS CHRISTI APP CON <b>128.675 343.75</b></p>	<p>NAVY CORPUS TOWER ★ <b>134.85 0 340.2 (N)</b> <b>125.525 360.2 (S)</b></p>	<p>GND CON <b>118.7 257.85</b></p>	<p>CLNC DEL <b>314.3</b></p>	<p>ASR/PAR</p>



EMERG SAFE ALT 100 NM 2600



CATEGORY	A	B	C	D
S-31L	420-1	403 (500-1)	420-1¼	403 (500-1¼)
CIRCLING	480-1	462 (500-1)	480-1½	580-2
			462 (500-1½)	562 (600-2)
CORPUS CHRISTI ALTIMETER SETTING				
S-31L	460-1	443 (500-1)	460-1¼	460-1½
			443 (500-1¼)	443 (500-1½)
CIRCLING	500-1	482 (500-1)	500-1½	580-2
			482 (500-1½)	562 (600-2)



CORPUS CHRISTI, TEXAS  
Amdt 2 12264

27° 42' N - 97° 17' W CORPUS CHRISTI NAS (TRUAX FLD) (KNGP)  
VOR/DME Y or TACAN Y RWY 31L

SC-3, 07 FEB 2013 to 07 MAR 2013

SC-3, 07 FEB 2013 to 07 MAR 2013