

CORPUS CHRISTI, TEXAS

## VOR/DME X RWY 31L

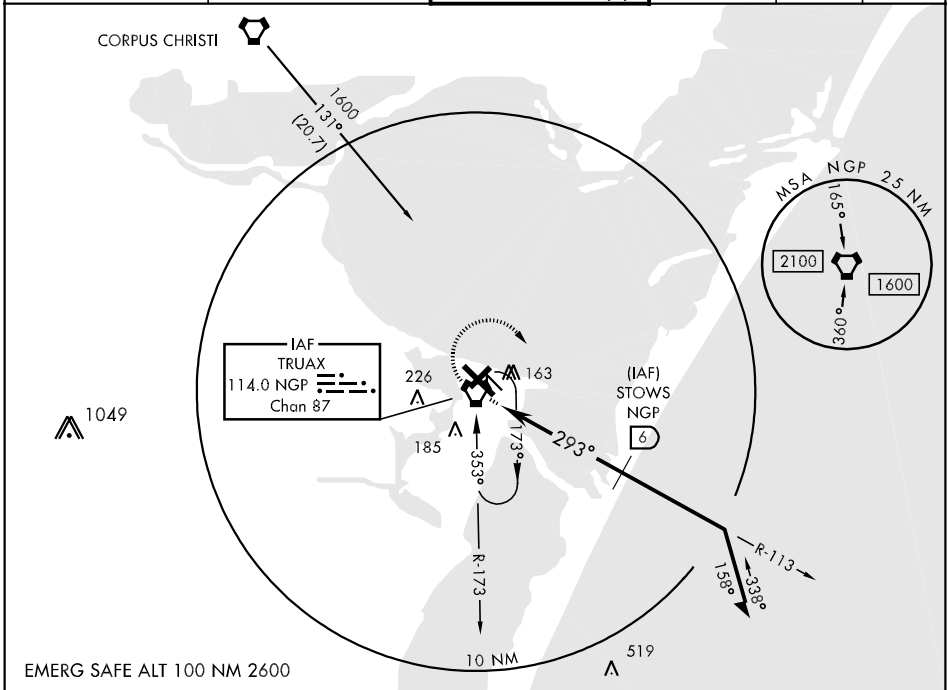
VORTAC NGP <b>114.0</b> Chan <b>87</b>	APCH CRS <b>293°</b>	Rwy Idg <b>8002</b> TDZE <b>17</b> Arpt Elev <b>18</b>
--	-------------------------	--

AL-98 [USN]

CORPUS CHRISTI NAS (TRUAX FLD) (KNGP)

<p>When local altimeter setting not received, use Corpus Christi altimeter setting.</p>	<p>MISSED APPROACH: Climb to NGP VORTAC via R-113, then climbing right turn to 1600 direct NGP VORTAC and hold.</p>
---	---

<p>ATIS ★ <b>114.0 127.9 290.9</b></p>	<p>CORPUS CHRISTI APP CON <b>128.675 343.75</b></p>	<p>NAVY CORPUS TOWER ★ <b>134.85 0 340.2 (N)</b> <b>125.525 360.2 (S)</b></p>	<p>GND CON <b>118.7 257.85</b></p>	<p>CLNC DEL <b>314.3</b></p>	<p>ASR/PAR</p>
--	---	---	--	----------------------------------	----------------



SC-3, 07 FEB 2013 to 07 MAR 2013

SC-3, 07 FEB 2013 to 07 MAR 2013

<p>* VDP NA when using Corpus Christi altimeter setting.</p>		<p>ELEV 18      TDZE 17</p>	
<p>VORTAC</p>		<p>STOWS (IAF) NGP (D) 6</p>	
<p>1600</p>		<p>1600</p>	
<p>113°</p>		<p>293°</p>	
<p>BAWWI (D) 1.6*</p>		<p>Remain within 10 NM of STOWS</p>	
<p>5 NM</p>		<p>2.65° TCH 42</p>	
CATEGORY	A	B	D
S-31L	400-1	383 (400-1)	400-1¼ 383 (400-1¼)
CIRCLING	480-1	462 (500-1)	480-1½ 462 (500-1½)
CORPUS CHRISTI ALTIMETER SETTING			
S-31L	440-1	423 (500-1)	440-1¼ 423 (500-1¼)
CIRCLING	500-1	482 (500-1)	500-1½ 482 (500-1½)
FAF to MAP 5 NM			
Knots	60	90	120 150 180
Min:Sec	5:00	3:20	2:30 2:00 1:40

CORPUS CHRISTI, TEXAS  
Amdt 2 11265

27°42'N-97°17'W

CORPUS CHRISTI NAS (TRUAX FLD) (KNGP)

## VOR/DME X RWY 31L