

CORPUS CHRISTI, TEXAS

VOR/DME or TACAN RWY 35

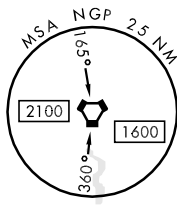
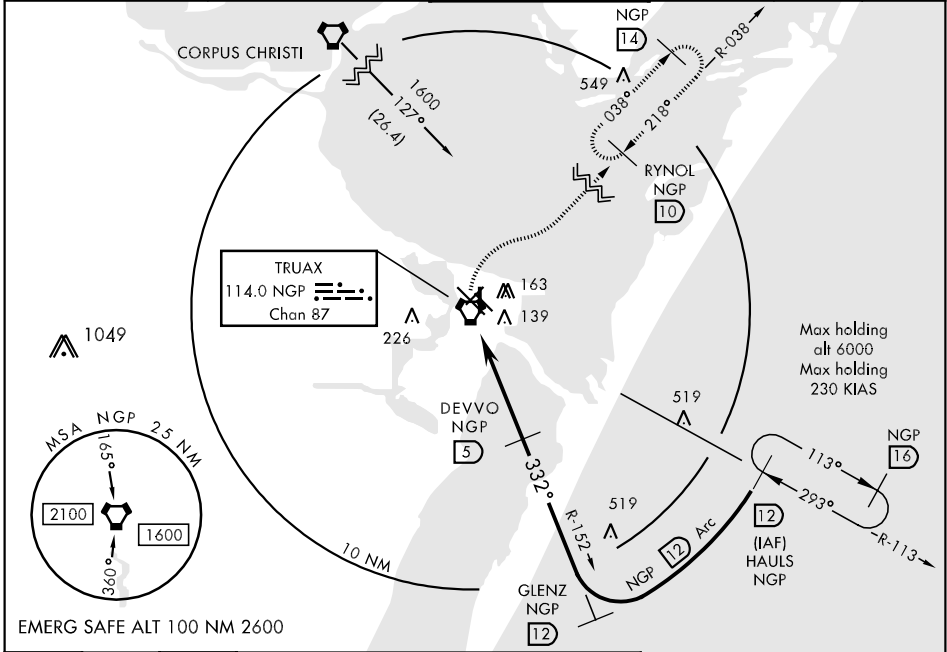
AL-98 [USN] CORPUS CHRISTI NAS (TRUAX FLD) (KNGP)

VORTAC NGP 114.0 Chan 87	APCH CRS 332°	Rwy Idg TDZE Arpt Elev 5003 18 18
--	-------------------------	---

▼ When local altimeter setting not received, use Corpus Christi altimeter setting.

MISSED APPROACH: Climb to NGP VORTAC via R-152, then climbing right turn to 1600 via NGP R-038 and hold.

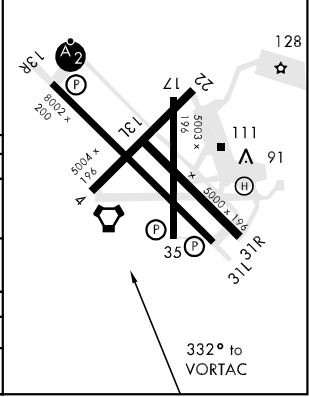
ATIS ★ 114.0 127.9 290.9	CORPUS CHRISTI APP CON 128.675 343.75	NAVY CORPUS TOWER ★ 134.85 340.2 (N) 125.525 360.2 (S)	GND CON 118.7 257.85	CLNC DEL 314.3	ASR/PAR
------------------------------------	---	--	--------------------------------	--------------------------	---------



CATEGORY	A	B	C	D
S-35	400-1	382	(400-1)	400-1½ 382 (400-1¼)
CIRCLING	480-1	462 (500-1)	480-1½ 462 (500-1½)	580-2 562 (600-2)
CORPUS CHRISTI ALTIMETER SETTING				
S-35	440-1	422 (500-1)	440-1½	422 (500-1½)
CIRCLING	500-1	482 (500-1)	500-1½	482 (500-1½)
			482 (500-1½)	562 (600-2)

ELEV 18	TDZE 18
---------	---------

REIL Rwy 13R-31L
HIRL Rwy 13R-31L, 04-22
HIRL Rwy 13L-31R, 17-35



CORPUS CHRISTI, TEXAS
Amdt 2 11265

27°42'N-97°17'W CORPUS CHRISTI NAS (TRUAX FLD) (KNGP)

VOR/DME or TACAN RWY 35

SC-3, 07 FEB 2013 to 07 MAR 2013

SC-3, 07 FEB 2013 to 07 MAR 2013