

CORPUS CHRISTI, TEXAS

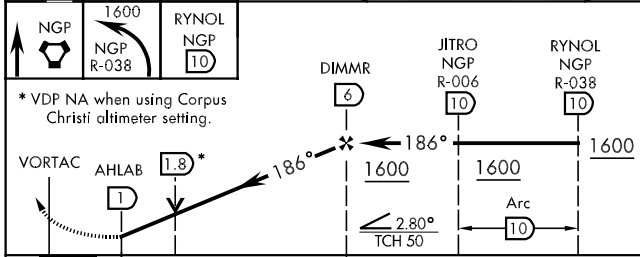
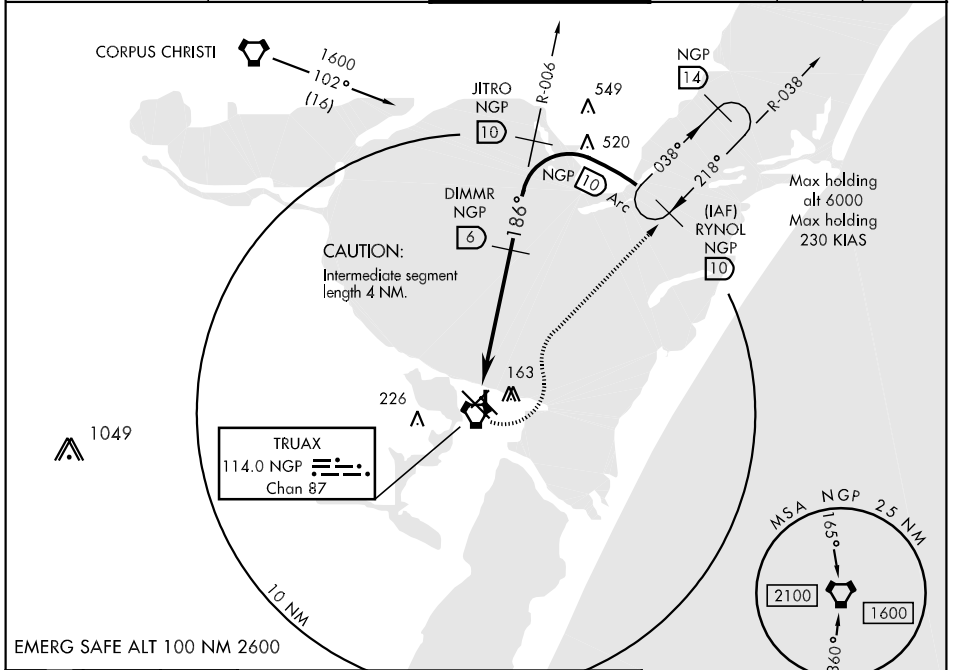
VOR/DME or TACAN RWY 17

AL-98 [USN] CORPUS CHRISTI NAS (TRUAX FLD) (KNGP)

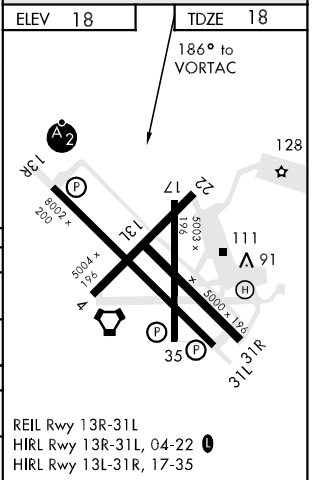
VORTAC NGP 114.0 Chan 87	APCH CRS 186°	Rwy Idg TDZE 18 Arpt Elev 18	5003
--	-------------------------	--	-------------

When local altimeter setting not received, use Corpus Christi altimeter setting. MISSED APPROACH: Climb to NGP VORTAC via R-006, then climbing left turn to 1600 via NGP R-038 to RYNOL and hold.

ATIS ★ 114.0 127.9 290.9	CORPUS CHRISTI APP CON 128.675 343.75	NAVY CORPUS TOWER ★ 134.85 340.2 (N) 125.525 360.2 (S)	GND CON 118.7 257.85	CLNC DEL 314.3	ASR/PAR
------------------------------------	---	--	--------------------------------	--------------------------	---------



CATEGORY	A	B	C	D
S-17	380-1	362 (400-1)	380-1¼ 362 (400-1¼)	
CIRCLING	480-1	462 (500-1)	480-1½ 462 (500-1½)	580-2 562 (600-2)
CORPUS CHRISTI ALTIMETER SETTING				
S-17	420-1	402 (500-1)	420-1¼ 402 (500-1¼)	
CIRCLING	500-1	482 (500-1)	500-1½ 482 (500-1½)	580-2 562 (600-2)



CORPUS CHRISTI, TEXAS 27°42'N-97°17'W CORPUS CHRISTI NAS (TRUAX FLD) (KNGP)

Amtd 2 11265

VOR/DME or TACAN RWY 17

SC-3, 07 FEB 2013 to 07 MAR 2013

SC-3, 07 FEB 2013 to 07 MAR 2013