

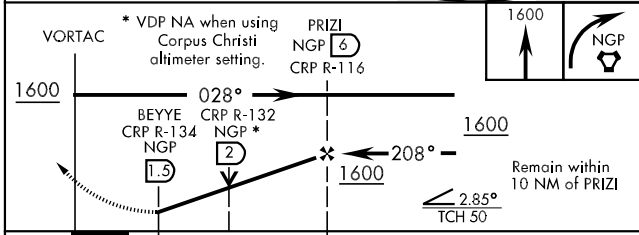
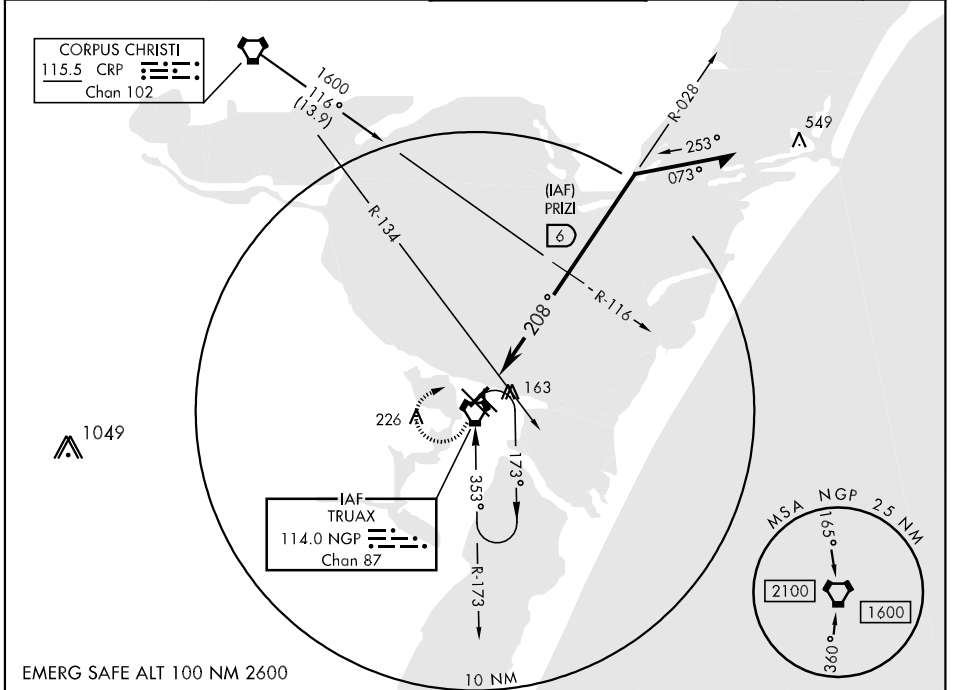
VORTAC NGP 114.0 Chan 87	APCH CRS 208°	Rwy Idg TDZE Arpt Elev 5004 15 18
--	-------------------------	---

AL-98 [USN]

CORPUS CHRISTI NAS (TRUAX FLD) (KNGP)

When local altimeter setting not received, use Corpus Christi altimeter setting. MISSED APPROACH: Climb to 1600, then turn right direct NGP VORTAC and hold.

ATIS ★ 114.0 127.9 290.9	CORPUS CHRISTI APP CON 128.675 343.75	NAVY CORPUS TOWER ★ 134.85 340.2 (N) 125.525 360.2 (S)	GND CON 118.7 257.85	CLNC DEL 314.3	ASR/PAR
------------------------------------	---	--	--------------------------------	--------------------------	---------



ELEV 18	TDZE 15
---------	---------

FAF to MAP 4.5 NM					
Knots	60	90	120	150	180
Min:Sec	4:30	3:00	2:15	1:48	1:30

CATEGORY	A	B	C	D
S-22	420-1 405 (500-1)		420-1¼ 405 (500-1¼)	
CIRCLING	480-1	462 (500-1)	480-1½ 462 (500-1½)	580-2 562 (600-2)
CORPUS CHRISTI ALTIMETER SETTING				
S-22	460-1	445 (500-1)	460-1¼ 445 (500-1¼)	460-1½ 445 (500-1½)
CIRCLING	500-1	482 (500-1)	500-1½ 482 (500-1½)	580-2 562 (600-2)

SC-3, 07 FEB 2013 to 07 MAR 2013

SC-3, 07 FEB 2013 to 07 MAR 2013