

CORPUS CHRISTI, TEXAS

# RNAV (GPS) RWY 4

|             |           |             |
|-------------|-----------|-------------|
| APCH CRS    | Rwy Idg   | <b>5004</b> |
| <b>039°</b> | TDZE      | <b>17</b>   |
|             | Arpt Elev | <b>18</b>   |

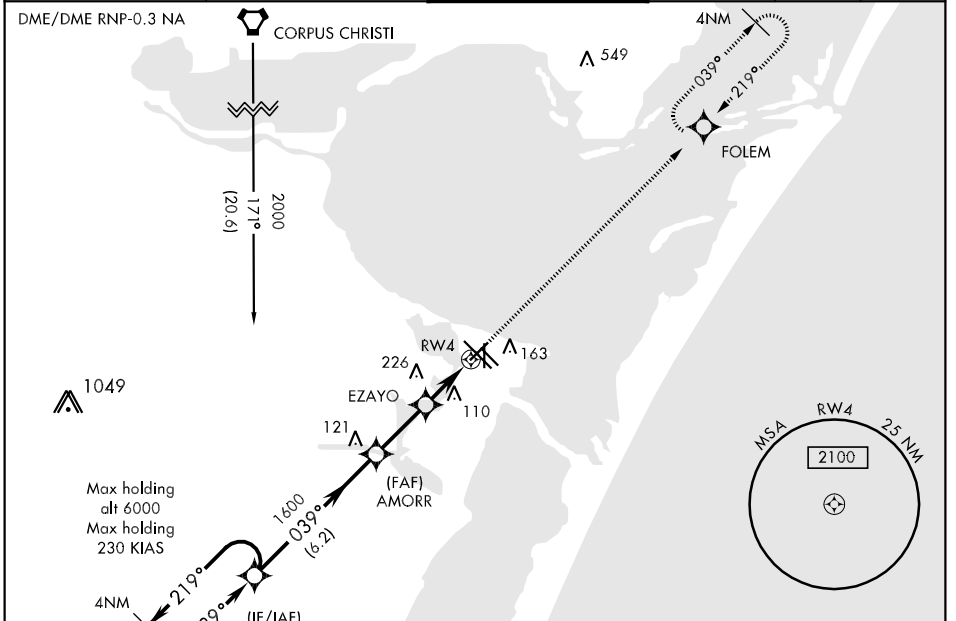
AL-98 [USN]

CORPUS CHRISTI NAS (TRUAX FLD) (KNGP)

▼ When local altimeter setting not received, use Corpus Christi altimeter setting.  
 Baro VNAV NA below -15°C (5°F) or above 42°C (108°F)  
 Baro VNAV NA when local altimeter not available.

MISSED APPROACH: Climb to 2000 direct FOLEM and hold.

|                          |                        |   |                     |              |         |
|--------------------------|------------------------|---|---------------------|--------------|---------|
| ATIS *                   | CORPUS CHRISTI APP CON | NAVY CORPUS TOWER *                                 | GND CON             | CLNC DEL     | ASR/PAR |
| <b>114.0 127.9 290.9</b> | <b>128.675 343.75</b>  | <b>134.85 340.2 (N)</b><br><b>125.525 360.2 (S)</b> | <b>118.7 257.85</b> | <b>314.3</b> |         |



SC-3, 07 FEB 2013 to 07 MAR 2013

SC-3, 07 FEB 2013 to 07 MAR 2013

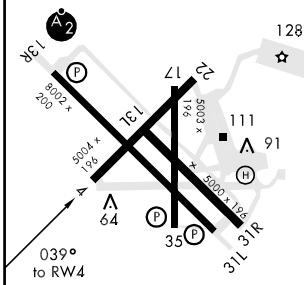
\* VDP NA when using Corpus Christi altimeter setting  
 † LNAV only

2000

FOLEM

EMERG SAFE ALT 100 NM 2600

|         |         |
|---------|---------|
| ELEV 18 | TDZE 17 |
|---------|---------|



REIL Rwy 13R-31L  
 HIRL Rwy 13R-31L, 04-22  
 HIRL Rwy 13L-31R, 17-35

| CATEGORY                         | A     | B           | C            | D            |
|----------------------------------|-------|-------------|--------------|--------------|
| LNAV/VNAV DA                     | 280-1 | 263         | (300-1)      |              |
| LNAV MDA                         | 360-1 | 343         | (400-1)      |              |
|                                  |       |             | 360-1¼       | 343 (400-1¼) |
| CIRCLING                         | 480-1 | 462 (500-1) | 480-1½       | 580-2        |
|                                  |       |             | 462 (500-1½) | 562 (600-2)  |
| CORPUS CHRISTI ALTIMETER SETTING |       |             |              |              |
| LNAV MDA                         | 400-1 | 383         | (400-1)      |              |
|                                  |       |             | 400-1¼       | 383 (400-1¼) |
| CIRCLING                         | 500-1 | 482 (500-1) | 500-1½       | 580-2        |
|                                  |       |             | 482 (500-1½) | 562 (600-2)  |

CORPUS CHRISTI, TEXAS  
 Orig 11265

27°42'N-97°17'W

CORPUS CHRISTI NAS (TRUAX FLD) (KNGP)

# RNAV (GPS) RWY 4