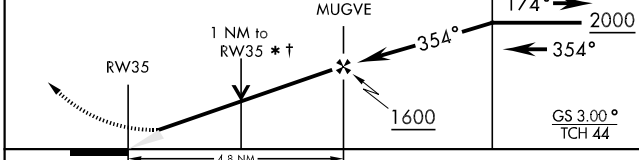
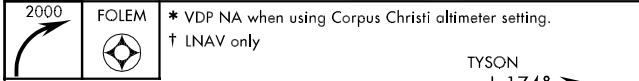
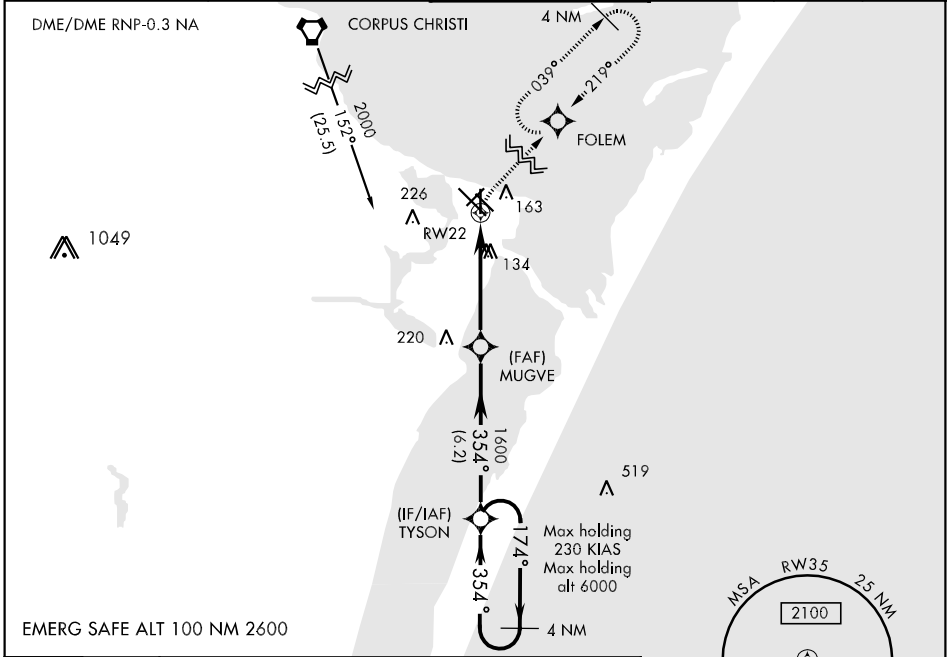


APCH CRS	Rwy Idg	5003
354°	TDZE	18
	Arpt Elev	18

When local altimeter setting not received, use Corpus Christi altimeter setting.
 Baro VNAV NA below -15°C (5°F) or above 42°C (108°F)
 Baro VNAV NA when local altimeter not available.

MISSED APPROACH: Climbing right turn to 2000 direct FOLEM and hold.

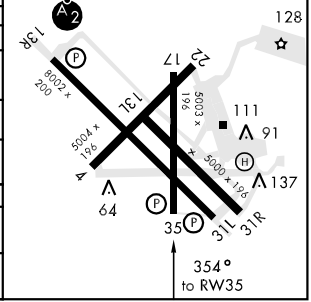
ATIS *	CORPUS CHRISTI APP CON	NAVY CORPUS TOWER ★	GND CON	CLNC DEL	ASR/PAR
114.0 127.9 290.9	128.675 343.75	134.85 340.2 (N) 125.525 360.2 (S)	118.7 257.85	314.3	



ELEV 18	TDZE 18
---------	---------

REIL Rwy 13R-31L
 HIRL Rwy 13R-31L, 04-22
 HIRL Rwy 13L-31R, 17-35

CATEGORY	A	B	C	D
LNAV MDA	400-1	382 (400-1)		400-1¼ 382 (400-1¼)
LNAV/VNAV DA	400-1¼	382 (400-1¼)		
CIRCLING	480-1¼	462 (500-1¼)	480-1½ 462 (500-1½)	580-2 562 (600-2)
CORPUS CHRISTI ALTIMETER SETTING				
LNAV MDA	420-1	402 (500-1)	420-1¼ 402 (500-1¼)	
CIRCLING	500-1	482 (500-1)	500-1½ 482 (500-1½)	580-2 562 (600-2)



SC-3, 07 FEB 2013 to 07 MAR 2013

SC-3, 07 FEB 2013 to 07 MAR 2013