

CORPUS CHRISTI, TEXAS

# RNAV (GPS) RWY 31R

APCH CRS	Rwy Idg	5000
309°	TDZE	18
	Arpt Elev	18

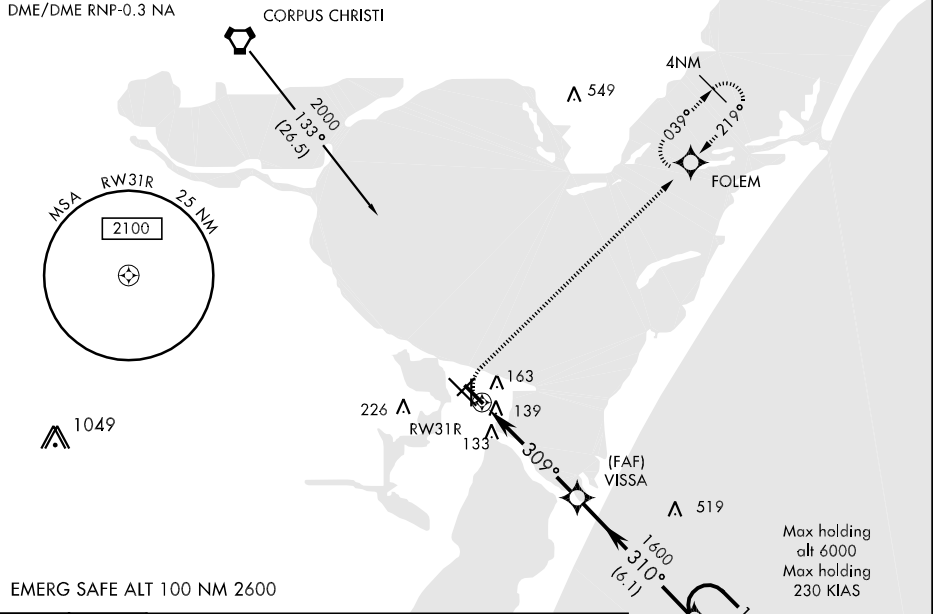
AL-98 [USN]

CORPUS CHRISTI NAS (TRUAX FLD) (KNGP)

When local altimeter setting not received, use Corpus Christi altimeter setting.  
 Baro VNAV NA below -15°C (5°F) or above 42°C (108°F)  
 Baro VNAV NA when local altimeter not available.

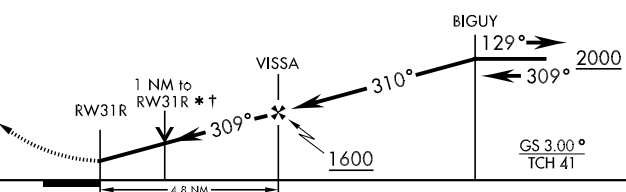
MISSED APPROACH: Climbing right turn to 2000 direct FOLEM and hold.

ATIS *	CORPUS CHRISTI APP CON	NAVY CORPUS TOWER *	GND CON	CLNC DEL	ASR/PAR
114.0 127.9 290.9	128.675 343.75	134.85 340.2 (N) 125.525 360.2 (S)	118.7 257.85	314.3	

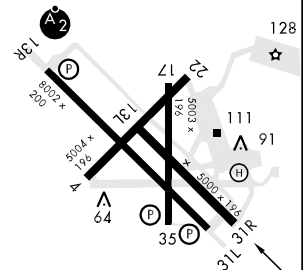


EMERG SAFE ALT 100 NM 2600

2000	FOLEM	* VDP NA when using Corpus Christi altimeter setting
		† LNAV only



ELEV	18	TDZE	18
------	----	------	----



REIL Rwy 13R-31L  
 HIRL Rwy 13R-31L, 04-22  
 HIRL Rwy 13L-31R, 17-35

CATEGORY	A		B		C		D	
	LNAV/VNAV DA	380-1¼		362		(400-1¼)		400-1¼
LNAV MDA	400-1		382 (400-1)				382 (400-1¼)	
CIRCLING	480-1¼ 462 (500-1¼)		480-1½ 462 (500-1½)		580-2		562 (600-2)	
CORPUS CHRISTI ALTIMETER SETTING								
LNAV MDA	440-1 422 (500-1)		440-1¼ 422 (500-1¼)					
CIRCLING	500-1 482 (500-1)		500-1½ 482 (500-1½)		580-2		562 (600-2)	

CORPUS CHRISTI, TEXAS  
 Amdt 1 11265

27°42'N-97°17'W

CORPUS CHRISTI NAS (TRUAX FLD) (KNGP)

# RNAV (GPS) RWY 31R

SC-3, 07 FEB 2013 to 07 MAR 2013

SC-3, 07 FEB 2013 to 07 MAR 2013