

CORPUS CHRISTI, TEXAS

RNAV (GPS) RWY 31L

CORPUS CHRISTI NAS (TRUAX FLD) (KNGP)

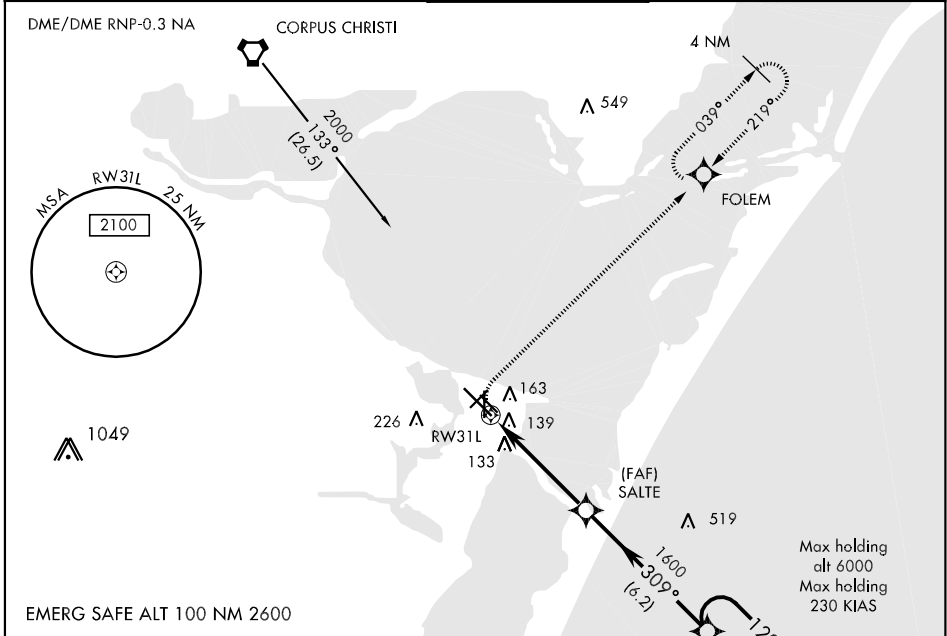
APCH CRS 309°	Rwy Idg 8002
	TDZE 17
	Arpt Elev 18

AL-98 [USN]

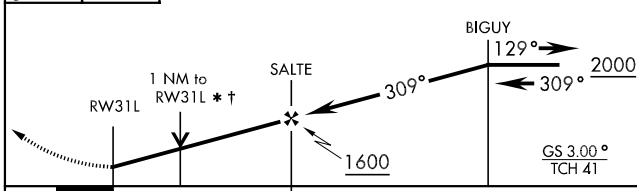
▼ When local altimeter setting not received, use Corpus Christi altimeter setting.
 Baro VNAV NA below -15°C (5°F) or above 42°C (108°F)
 Baro VNAV NA when local altimeter not available.

MISSED APPROACH: Climbing right turn to 2000 direct FOLEM and hold.

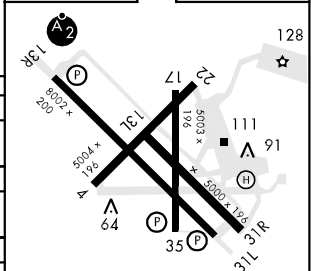
ATIS ★ 114.0 127.9 290.9	CORPUS CHRISTI APP CON 128.675 343.75	NAVY CORPUS TOWER ★ 134.85 340.2 (N) 125.525 360.2 (S)	GND CON 118.7 257.85	CLNC DEL 314.3	ASR/PAR
------------------------------------	---	--	--------------------------------	--------------------------	---------



2000	FOLEM	* VDP NA when using Corpus Christi altimeter setting † LNAV only
------	-------	---



ELEV 18	TDZE 17
---------	---------



CATEGORY	A	B	C	D
LNAV MDA	400-1	383 (400-1)		400-1¼ 383 (400-1¼)
LNAV/VNAV DA	440-1½	423 (500-1½)		
CIRCLING	480-1½	462 (500-1½)		580-2 562 (600-2)
CORPUS CHRISTI ALTIMETER SETTING				
LNAV MDA	440-1	423 (500-1)	440-1¼ 423 (500-1¼)	440-1½ 423 (500-1½)
CIRCLING	500-1	482 (500-1)	500-1½ 482 (500-1½)	580-2 562 (600-2)

REIL Rwy 13R-31L
 HIRL Rwy 13R-31L, 04-22 309°
 HIRL Rwy 13L-31R, 17-35 to RW31L

CORPUS CHRISTI, TEXAS
 Orig 11265

27°42'N-97°17'W

CORPUS CHRISTI NAS (TRUAX FLD) (KNGP)

RNAV (GPS) RWY 31L

SC-3, 07 FEB 2013 to 07 MAR 2013

SC-3, 07 FEB 2013 to 07 MAR 2013