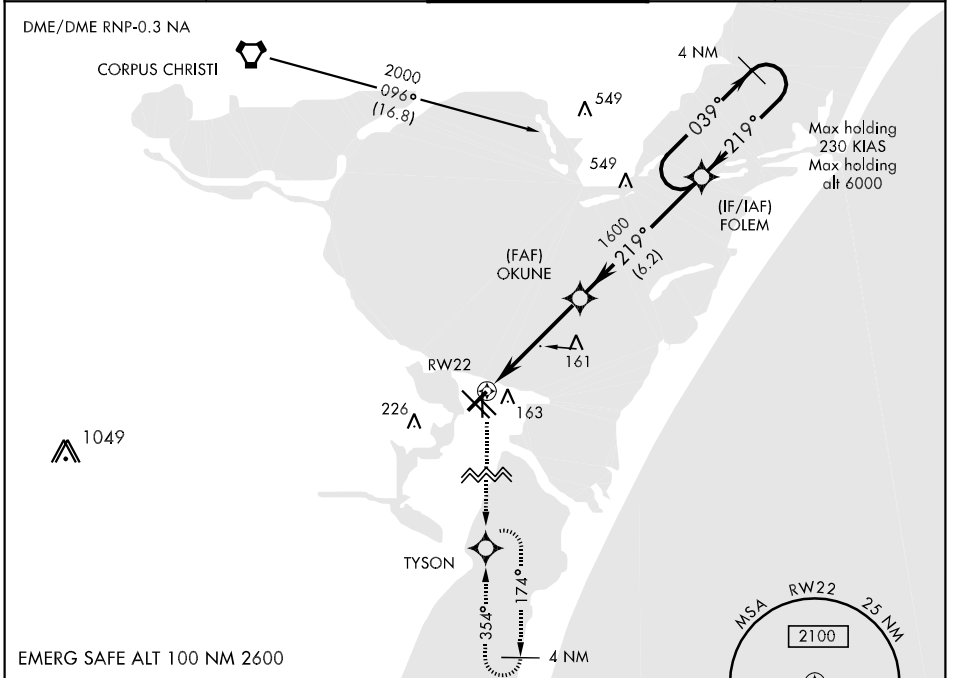


APCH CRS	Rwy Idg	5004
219°	TDZE	15
	Arpt Elev	18

When local altimeter setting not received, use Corpus Christi altimeter setting.
 Baro VNAV NA below -15°C (5°F) or above 42°C (108°F)
 Baro VNAV NA when local altimeter not available.

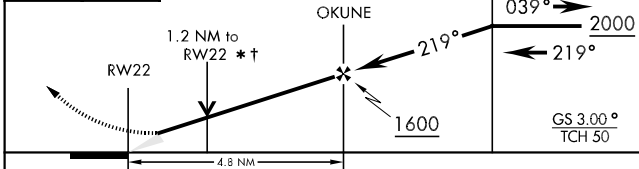
MISSED APPROACH: Climbing left turn to 2000 direct TYSON and hold.

ATIS *	CORPUS CHRISTI APP CON	NAVY CORPUS TOWER *	GND CON	CLNC DEL	ASR/PAR
114.0 127.9 290.9	128.675 343.75	134.85 340.2 (N) 125.525 360.2 (S)	118.7 257.85	314.3	



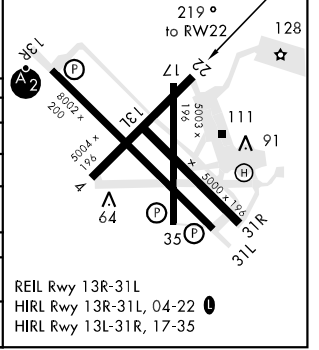
EMERG SAFE ALT 100 NM 2600

2000 TYSON * VDP NA when using Corpus Christi altimeter setting.
 † LNAV only



ELEV 18	TDZE 15
---------	---------

CATEGORY	A	B	C	D
LNAV/VNAV DA	340-1¼		325	(400-1¼)
LNAV MDA	420-1	405 (500-1)	420-1¼	405 (500-1¼)
CIRCLING	480-1¼	462 (500-1¼)	480-1½	580-2
CORPUS CHRISTI ALTIMETER SETTING				
LNAV MDA	460-1	445 (500-1)	460-1¼	445 (500-1¼)
CIRCLING	500-1	482 (500-1)	500-1½	580-2
			482 (500-1½)	562 (600-2)



REIL Rwy 13R-31L
 HIRL Rwy 13R-31L, 04-22
 HIRL Rwy 13L-31R, 17-35

SC-3, 07 FEB 2013 to 07 MAR 2013

SC-3, 07 FEB 2013 to 07 MAR 2013