

CORPUS CHRISTI, TEXAS

# RNAV (GPS) RWY 17

APCH CRS	Rwy Idg	<b>5003</b>
<b>174°</b>	TDZE	<b>18</b>
	Arpt Elev	<b>18</b>

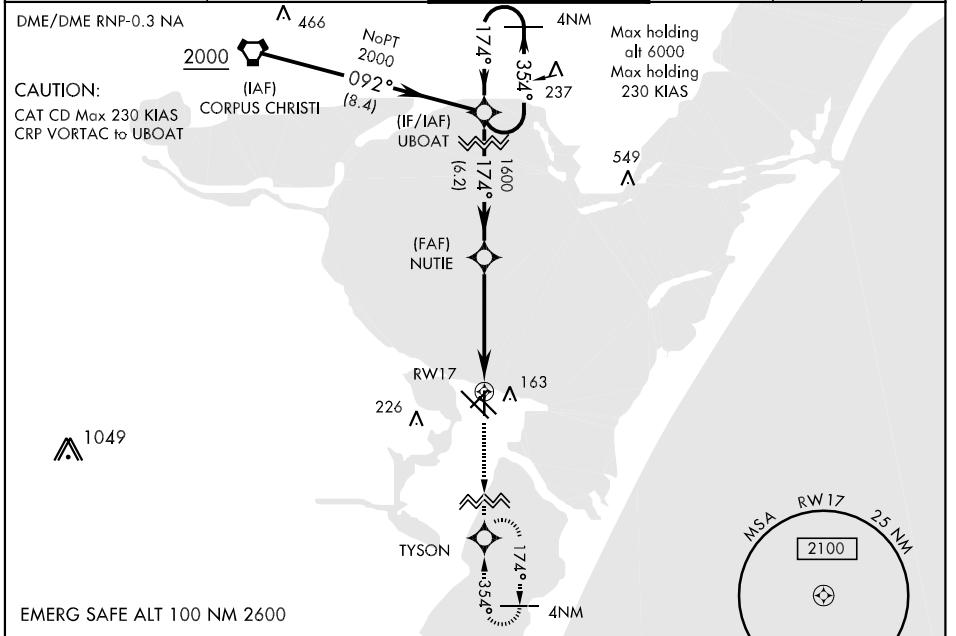
AL-98 [USN]

CORPUS CHRISTI NAS (TRUAX FLD) (KNGP)

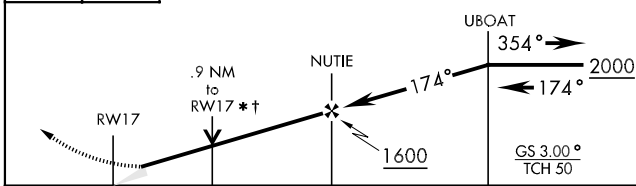
▼ When local altimeter setting not received, use Corpus Christi altimeter setting.  
 Baro VNAV NA below -15°C (5°F) or above 42°C (108°F).  
 Baro VNAV NA when local altimeter not available.

MISSED APPROACH: Climb to 2000 direct TYSON and hold.

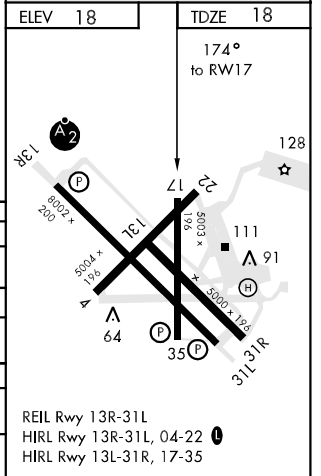
ATIS *	CORPUS CHRISTI APP CON	NAVY CORPUS TOWER *	GND CON	CLNC DEL	ASR/PAR
<b>114.0 127.9 290.9</b>	<b>128.675 343.75</b>	<b>134.85 340.2 (N)</b> <b>125.525 360.2 (S)</b>	<b>118.7 257.85</b>	<b>314.3</b>	



2000	TYSON	* VDP NA when using Corpus Christi altimeter setting. † LNAV only
------	-------	----------------------------------------------------------------------



CATEGORY	A	B	C	D
LNAV MDA	340-1	322	(400-1)	
LNAV/VNAV DA	340-1¼	322	(400-1¼)	
CIRCLING	480-1¼	462 (500-1¼)	462 (500-1½)	580-2 (600-2)
CORPUS CHRISTI ALTIMETER SETTING				
LNAV MDA	360-1	342	(400-1)	360-1¼ (400-1¼)
CIRCLING	500-1	482 (500-1)	482 (500-1½)	580-2 (600-2)



CORPUS CHRISTI, TEXAS  
 Orig 11265

27°42'N-97°17'W

CORPUS CHRISTI NAS (TRUAX FLD) (KNGP)

# RNAV (GPS) RWY 17

SC-3, 07 FEB 2013 to 07 MAR 2013

SC-3, 07 FEB 2013 to 07 MAR 2013