

CORPUS CHRISTI, TEXAS

RNAV (GPS) RWY 13L

APCH CRS	Rwy Idg	5000
129°	TDZE	18
	Arpt Elev	18

AL-98 [USN]

CORPUS CHRISTI NAS (TRUAX FLD) (KNGP)

When local altimeter setting not received, use Corpus Christi altimeter setting.
 Baro VNAV NA below -15°C (5°F) or above 42°C (108°F)
 Baro VNAV NA when local altimeter not available.

MISSED APPROACH: Climb to 1600 direct BIGUY and hold.

ATIS ★
114.0 127.9 290.9

CORPUS CHRISTI APP CON
128.675 343.75

NAVY CORPUS TOWER ★
134.85 340.2 (N)
125.525 360.2 (S)

GND CON
118.7 257.85

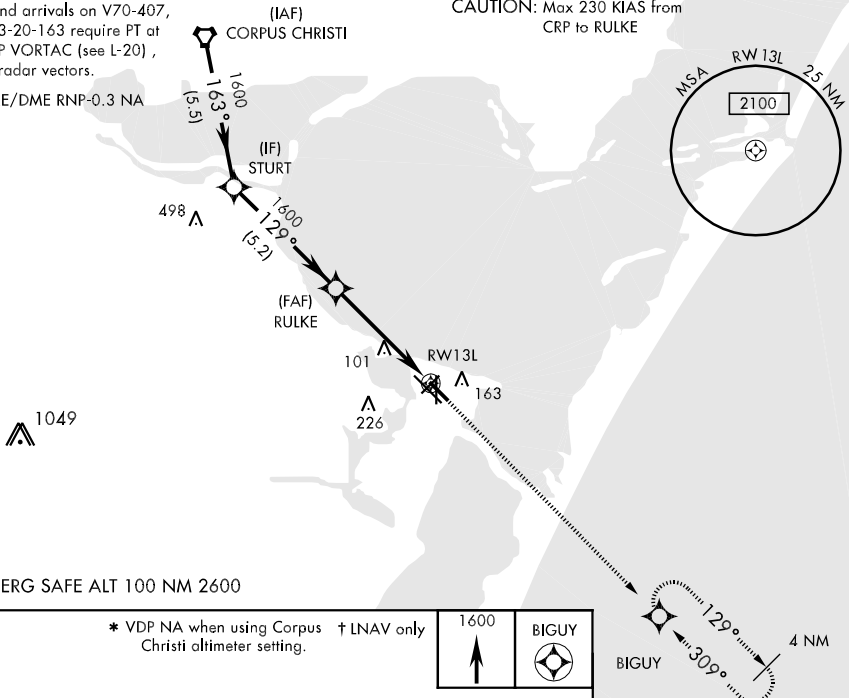
CLNC DEL
314.3

ASR/PAR

Nbnd arrivals on V70-407, V13-20-163 require PT at CRP VORTAC (see L-20), or radar vectors.

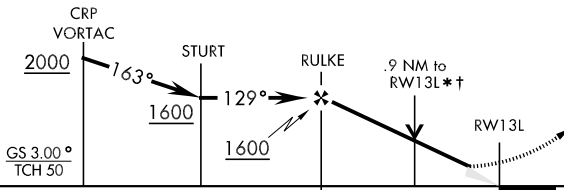
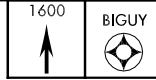
DME/DME RNP-0.3 NA

CAUTION: Max 230 KIAS from CRP to RULKE

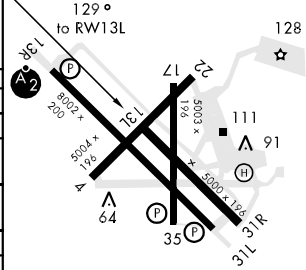


EMERG SAFE ALT 100 NM 2600

* VDP NA when using Corpus Christi altimeter setting. † LNAV only



ELEV	18	TDZE	18
------	----	------	----



CATEGORY	A	B	C	D
LNAV/VNAV DA	340-1¼		322 (400-1¼)	360-1¼
LNAV MDA	360-1	342 (400-1)	342 (400-1¼)	
CIRCLING	480-1¼	462 (500-1¼)	480-1½ 462 (500-1½)	580-2 562 (600-2)
CORPUS CHRISTI ALTIMETER SETTING				
LNAV MDA	400-1	382 (400-1)	400-1¼ 382 (400-1¼)	
CIRCLING	500-1¼	482 (500-1¼)	500-1½ 482 (500-1½)	580-2 562 (600-2)

REIL Rwy 13R-31L
 HIRL Rwy 13R-31L, 04-22
 HIRL Rwy 13L-31R, 17-35

CORPUS CHRISTI, TEXAS
 Amdt 2 11265

27°42'N-97°17'W

CORPUS CHRISTI NAS (TRUAX FLD) (KNGP)

RNAV (GPS) RWY 13L

SC-3, 07 FEB 2013 to 07 MAR 2013

SC-3, 07 FEB 2013 to 07 MAR 2013