

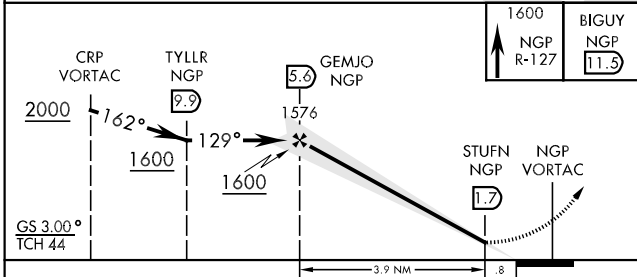
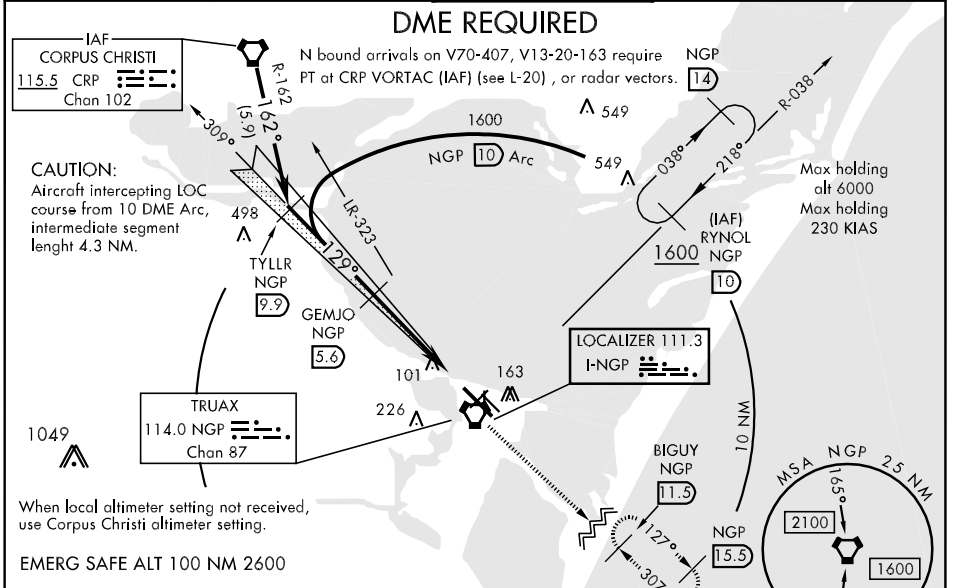
LOC I-NGP <b>111.3</b>	APCH CRS <b>129°</b>	Rwy Idg 8002	TDZE 13	Arpt Elev 18	AL-98 [USN]	CORPUS CHRISTI NAS (TRUAX FLD) (KNGP)	
---------------------------	-------------------------	-----------------	------------	-----------------	-------------	---------------------------------------	--

\* When ALS inop, increase CAT AB vis to ¾ mile.  
 \*\* When ALS inop, increase vis to 1 mile.  
 \*\*\* When ALS inop, increase CAT ABC vis to 1 mile, CAT D vis to 1 ¼ miles.

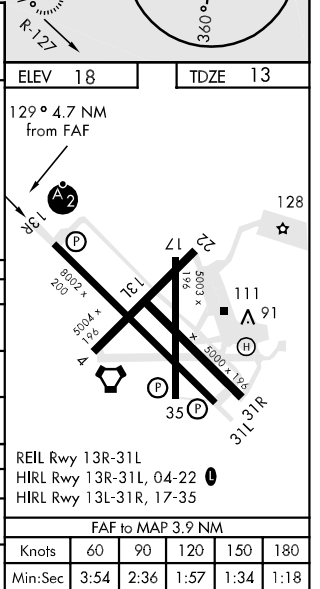
SALSF **A2**

MISSED APPROACH: Climb to 1600, intercept NGP VORTAC R-127 to BIGUY and hold.

ATIS * <b>114.0 127.9 290.9</b>	CORPUS CHRISTI APP CON <b>128.675 343.75</b>	NAVY CORPUS TOWER * <b>134.85 340.2 (N) 125.525 360.2 (S)</b>	GND CON <b>118.7 257.85</b>	CLNC DEL <b>314.3</b>	ASR/PAR
------------------------------------	---	--	--------------------------------	--------------------------	---------



CATEGORY	A	B	C	D
S-ILS 13R *	213-½	200 (200-½)	213-¾	200 (200-¾)
S-LOC/DME 13R **	340-¾		327 (400-¾)	
CIRCLING	480-1	462 (500-1)	480-1½ 462 (500-1½)	580-2 562 (600-2)
CORPUS CHRISTI ALTIMETER SETTING				
S-ILS 13R **	245-¾		232 (300-¾)	
S-LOC/DME 13R ***	360-¾		347 (400-¾)	360-1 347 (400-1)
CIRCLING	500-1	482 (500-1)	500-1½ 482 (500-1½)	580-2 562 (600-2)



SC-3, 07 FEB 2013 to 07 MAR 2013

SC-3, 07 FEB 2013 to 07 MAR 2013